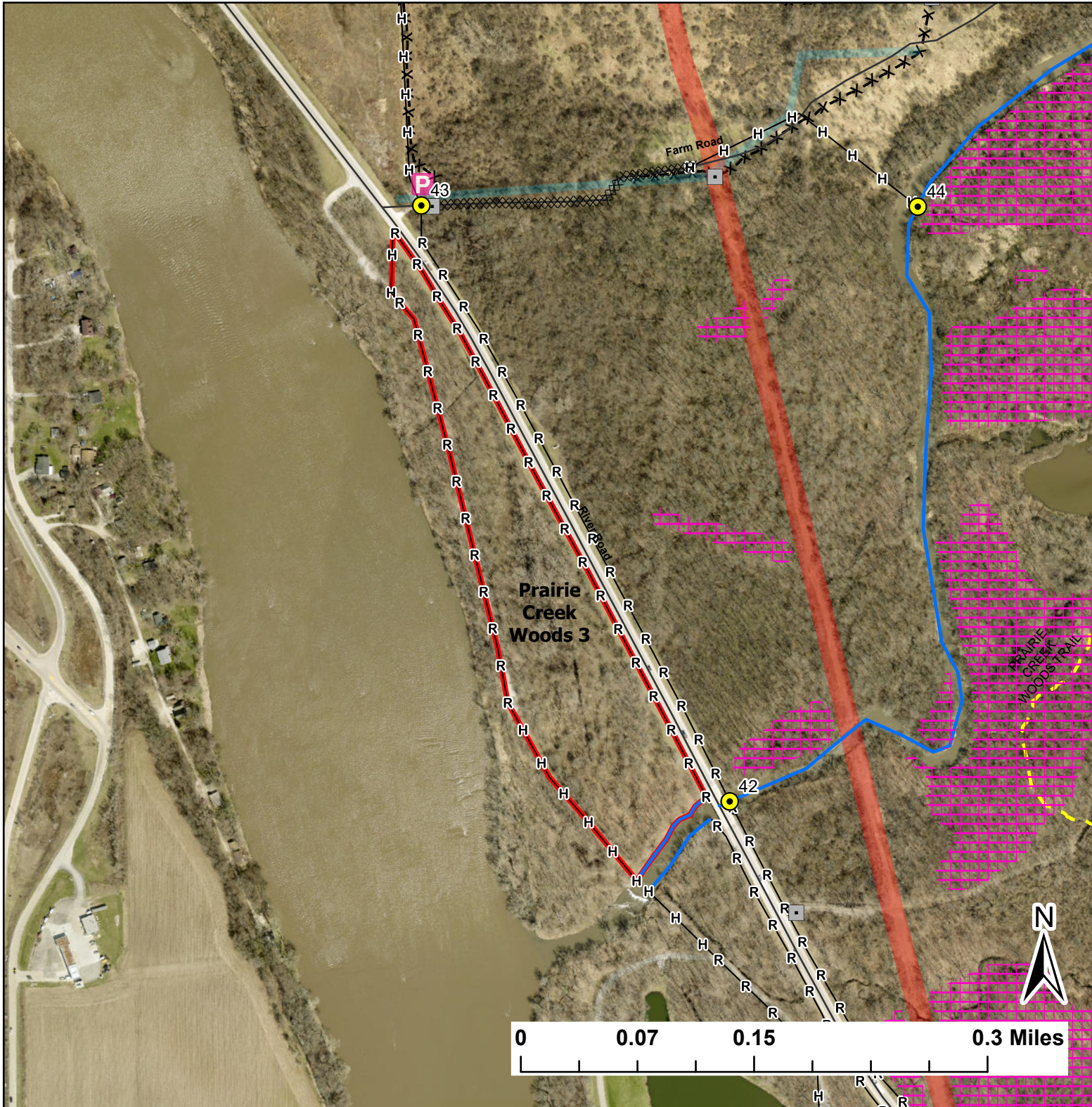


Prairie Creek Woods 3

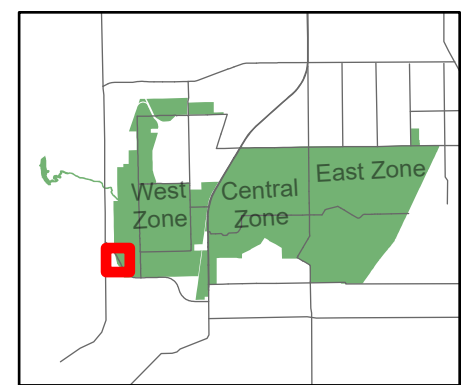
Lat:41.344101
Long:-88.184601

Acres:15.12



Legend

- Burn Unit
- Drop Point
- Lock/Gate
- Parking Lot
- Electric And Telephone Line
- Pipeline
- Barbed Wire
- Trail
- Native Vegetation - Sensitive Area
- Creek As Completed Line
- Hand Line
- Mow Line
- Road As Completed Line
- Road



Midwin National Tallgrass Prairie
Prairie Supervisor's Office and Welcome Center
30239 S. State Route 53
Wilmington, IL 60481
Phone: (815) 423 - 6370