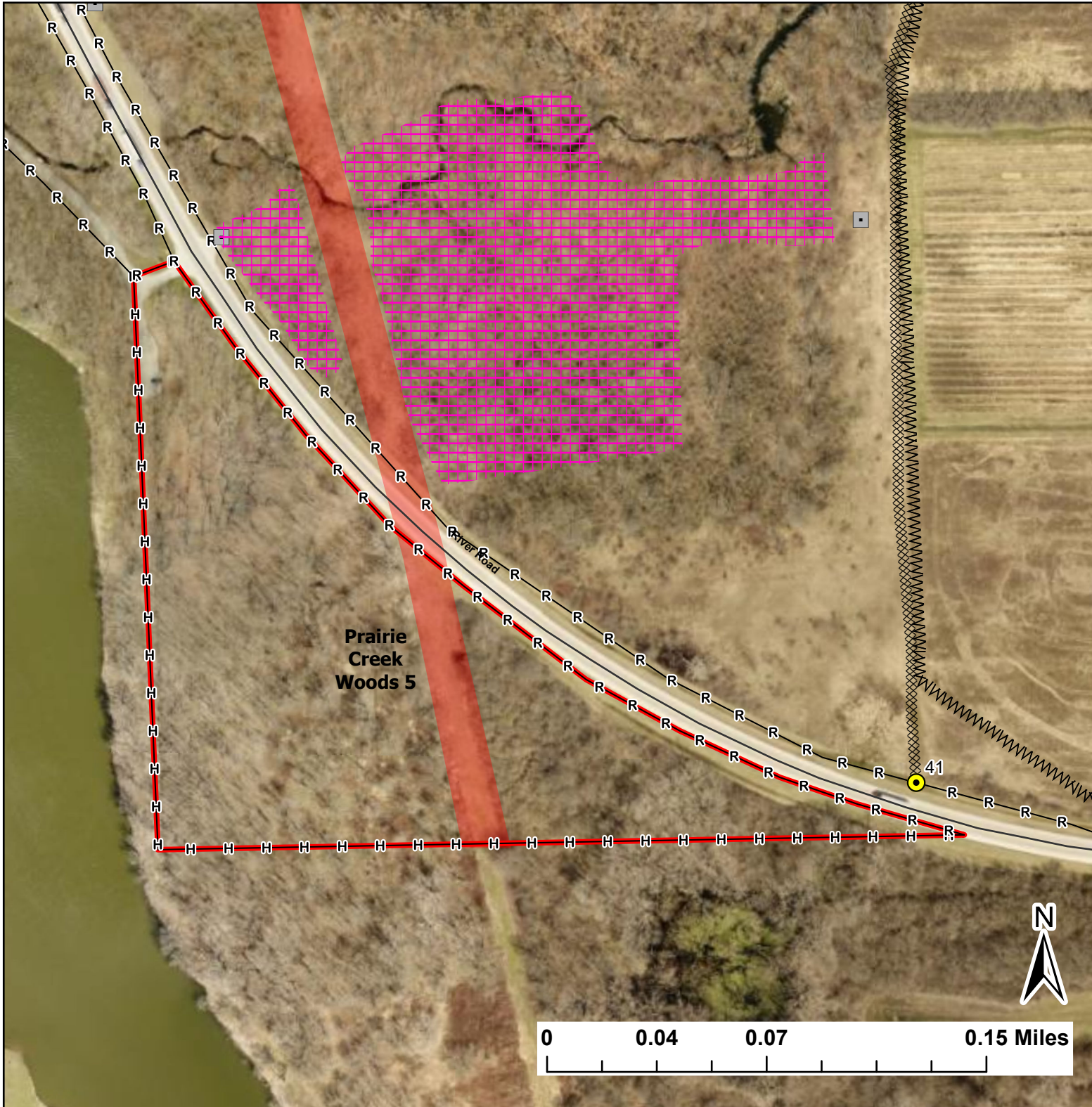


Prairie Creek Woods 5

Lat:41.3381

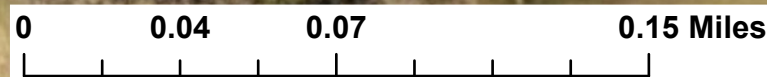
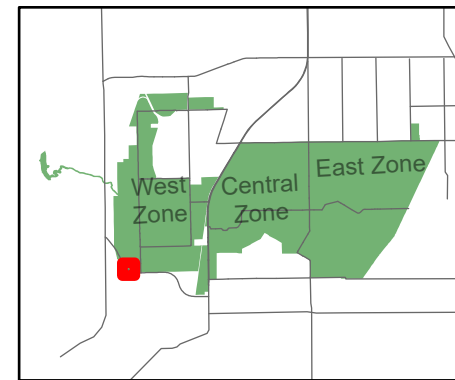
Long:-88.179604

Acres:13.92



Legend

- Burn Unit
- Drop Point
- Lock/Gate
- Pipeline
- Woven Wire
- Native Vegetation - Sensitive Area
- Hand Line
- Mow Line
- Road As Completed Line
- Road



Midwin National Tallgrass Prairie
Prairie Supervisor's Office and Welcome Center
30239 S. State Route 53
Wilmington, IL 60481
Phone: (815) 423 - 6370