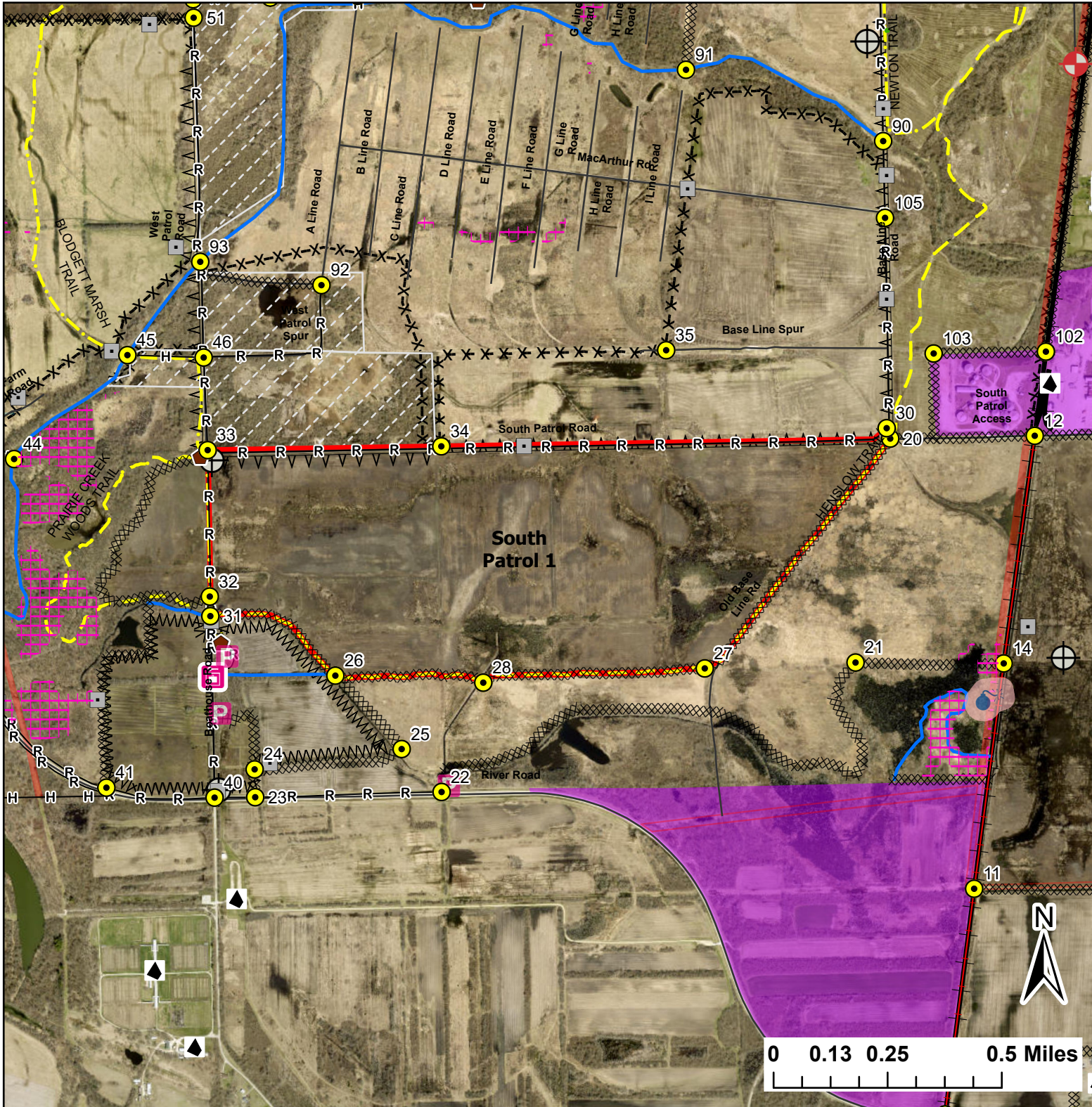


South Patrol 1

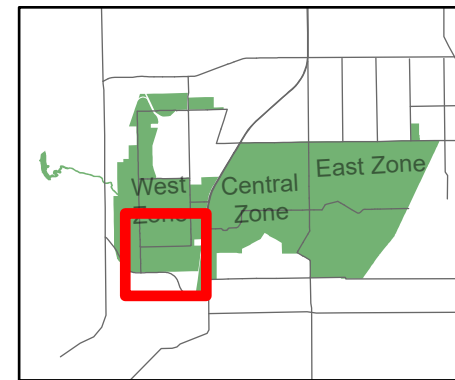
Lat:41.345299

Long:-88.158699

Acres:397.98



Legend	
	Burn Unit
	Buildings
	Cemetery
	Drop Point
	Entry Point
	Lock/Gate
	Parking Lot
	Army Deep Well
	Well
	Railroad
	Electric And Telephone Line
	Pipeline
	Barbed Wire
	Chain Link
	Woven Wire
	Trail
	Half Mile Structures
	Eagles Nests - Sensitive Area
	Native Vegetation - Sensitive Area
	Adjacent Land
	Creek As Completed Line
	Hand Line
	Mow Line
	Railroad As Completed Line
	Road As Completed Line
	Army Inholding
	Road



Midwin National Tallgrass Prairie
 Prairie Supervisor's Office and Welcome Center
 30239 S. State Route 53
 Wilmington, IL 60481
 Phone: (815) 423 - 6370