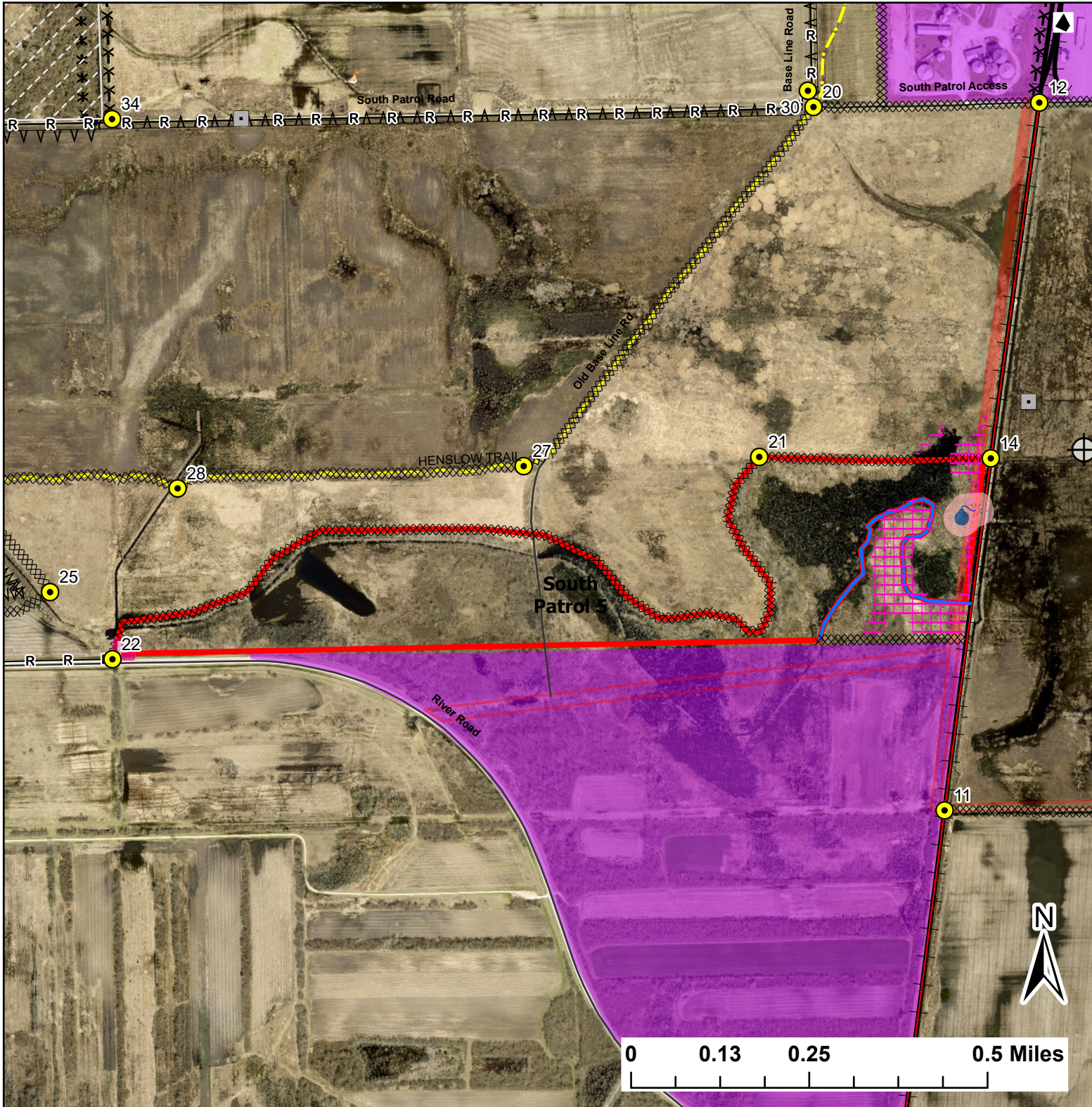


# South Patrol 5

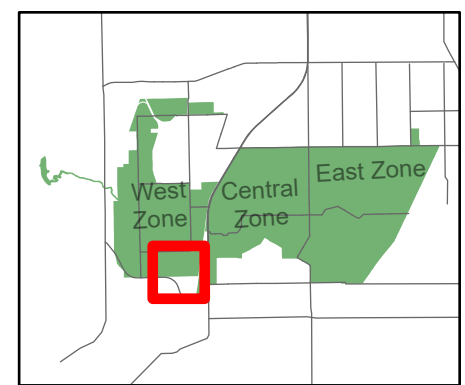
Lat:41.339401  
Long:-88.149101

Acres:99.72



**Legend**

- Burn Unit
- Drop Point
- Lock/Gate
- Parking Lot
- Well
- Railroad
- Pipeline
- Barbed Wire
- Chain Link
- Woven Wire
- Trail
- Half Mile Structures
- Eagles Nests - Sensitive Area
- Native Vegetation - Sensitive Area
- Adjacent Land
- Creek As Completed Line
- Railroad As Completed Line
- Road As Completed Line
- Army Inholding
- Road



Midwin National Tallgrass Prairie  
Prairie Supervisor's Office and Welcome Center  
30239 S. State Route 53  
Wilmington, IL 60481  
Phone: (815) 423 - 6370