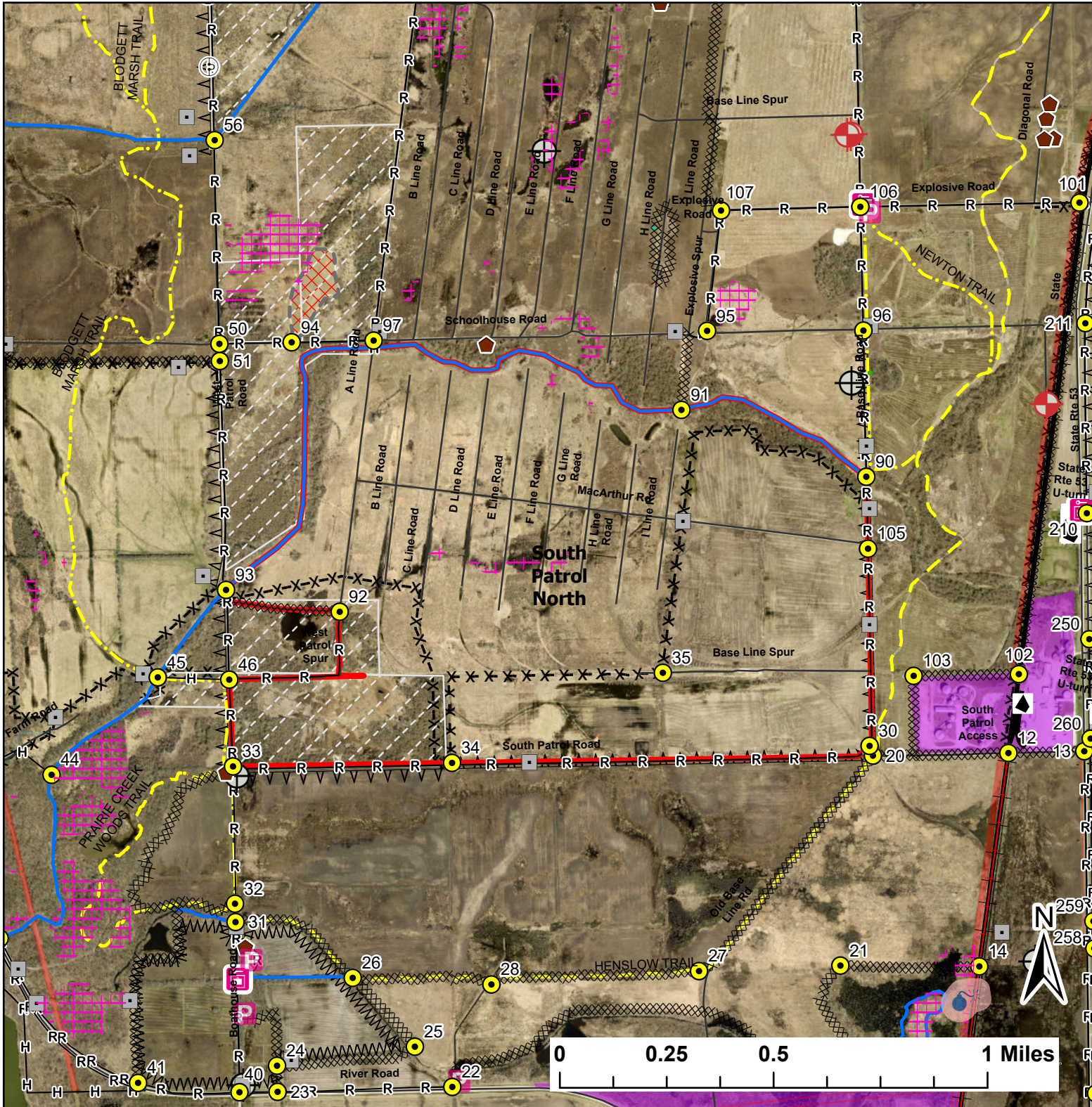


# South Patrol North

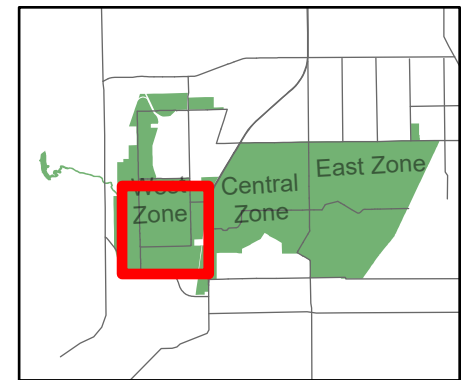
Lat:41.3549  
Long:-88.157402

Acres:767.96



**Legend**

- Burn Unit
- Buildings
- Cemetery
- Drop Point
- Entry Point
- Hill Thistle - Sensitive Area
- Lock/Gate
- Parking Lot
- Army Deep Well
- Well
- Railroad
- Electric And Telephone Line
- Pipeline
- Barbed Wire
- Chain Link
- Woven Wire
- Trail
- ▲ Half Mile Structures
- Eagles Nests - Sensitive Area
- Native Vegetation - Sensitive Area
- X DoD Landfill Hazard
- Creek As Completed Line
- Gravel As Line
- Hand Line
- X Mow Line
- Railroad As Completed Line
- Road As Completed Line
- Army Inholding
- Road



Midwin National Tallgrass Prairie  
Prairie Supervisor's Office and Welcome Center  
30239 S. State Route 53  
Wilmington, IL 60481  
Phone: (815) 423 - 6370

