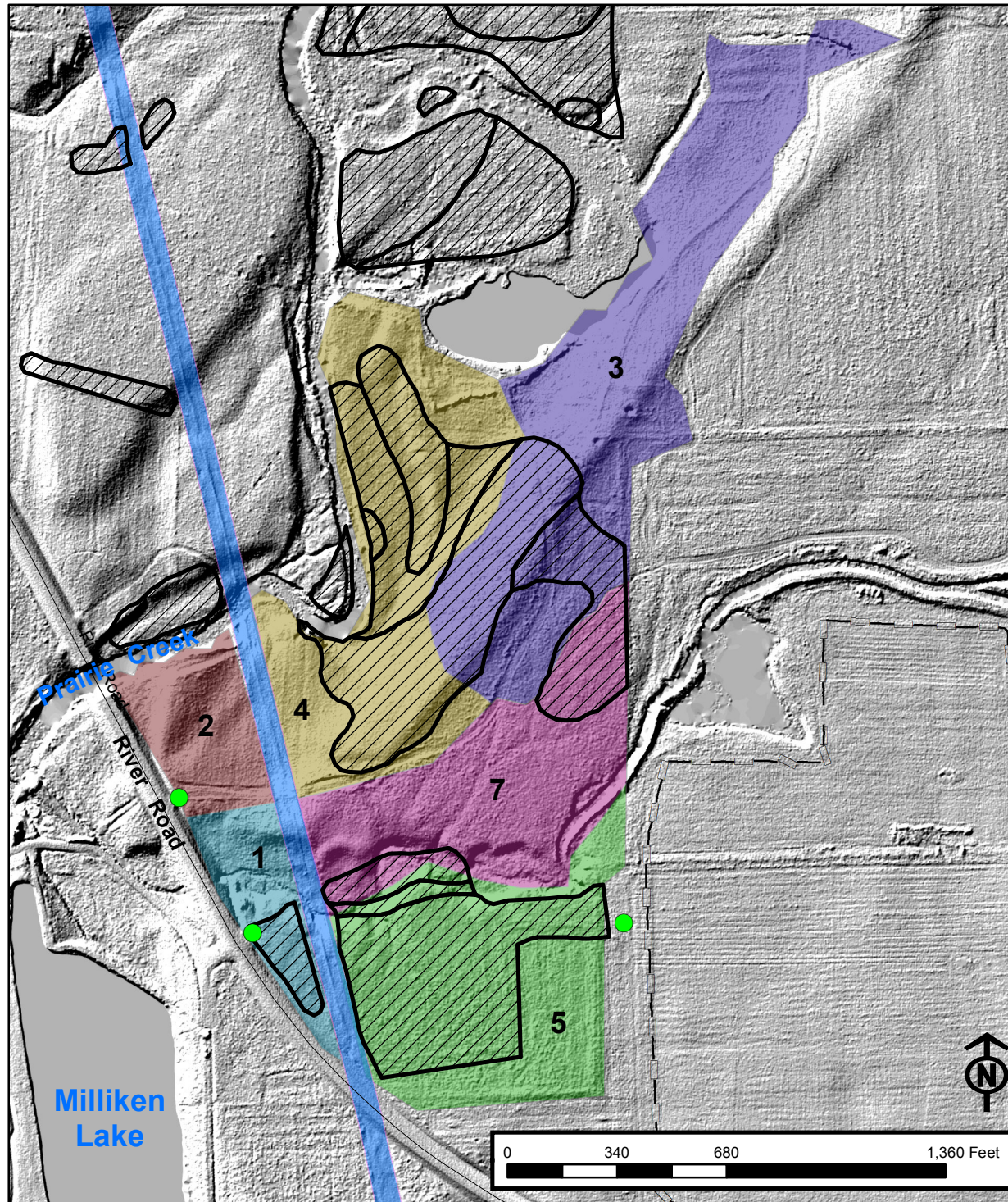


Prairie Creek Woods West Woody Removal



- Gated Access
- Pipeline ROW
- Native Vegetation Remnant
- Unit 1, 3.38040429762
- Unit 2, 3.95570682064
- Unit 3, 18.9488511618
- Unit 4, 15.6385588049
- Unit 5, 13.1229733787
- Unit 7, 11.1418487243

Midewin National Tallgrass Prairie

USDA Forest Service
30239 S. State Route 53
Wilmington, IL 60481



*Compiled by the Midewin NTP on 03.09.23
using the most current GIS data available. GIS
data displayed is intended for this project and
using the data for other purposes may yield
inaccurate or misleading results.*

