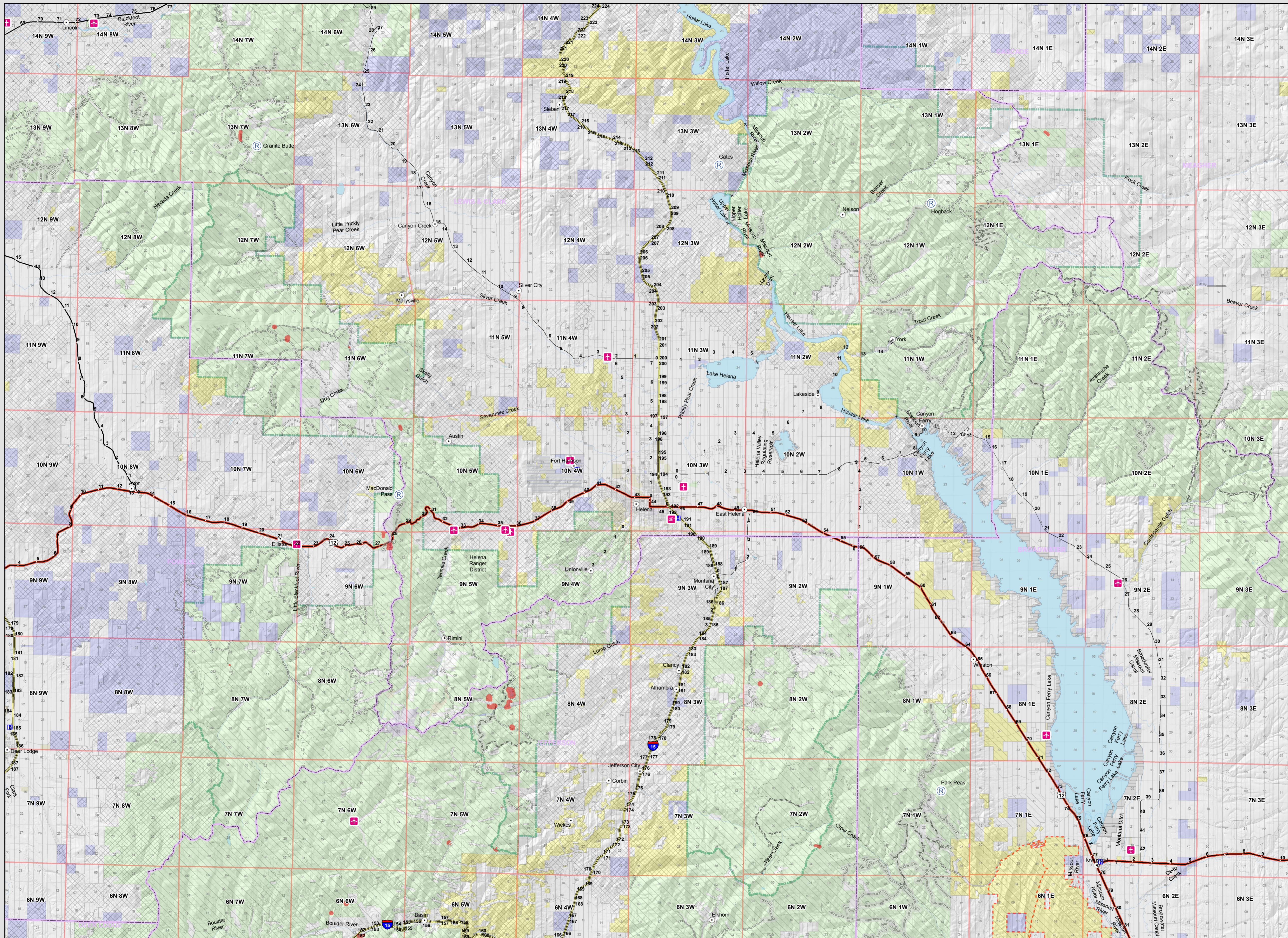




Lewis and Clark National Forest Initial Attack Map

Helena Ranger District



- Airport
- Heliport
- Hospitals
- Repeaters
- Aerial Fire Retardant Avoidance Areas: Terrestrial
- MVUM Trail Allow (Trail Status = EXISTING)**
 - Non-motorized and other
 - 11 - Special Designation, Yearlong
- MVUM Road Allow (Roads open to motorized public use)**
 - 1 - Open to All Vehicles, Yearlong
 - 2 - Open to All Vehicles, Seasonal
 - 3 - Open to Highway Legal Vehicles Only, Yearlong
 - 4 - Open to Highway Legal Vehicles Only, Seasonal
 - 11 - Special Designation, Open yearlong
- Montana Cities and Towns
- Montana County
- Highway Reference Markers (Mile Posts)
- Major Highways**
 - Interstate
 - U.S. Route
- Highways**
 - Interstate
 - U.S. Route
 - Primary Highway
 - Secondary Highway
 - Roads
- Ownership Basic (Clip)**
 - BLM
 - US Forest Service
 - Private Land
 - Local Government
 - Montana Trust and FWP
 - Other State Land
 - National Park Service
 - Other Federal Land
 - Unknown
- National Guard Firing Range
- Ranger District Boundary
- Fire Protection Districts - In Hatch**
- Protection Agency**
 - Local Government
 - USFS R1
 - BLM
 - BOR
 - DOD
 - National Parks
 - DNRC
 - Water

