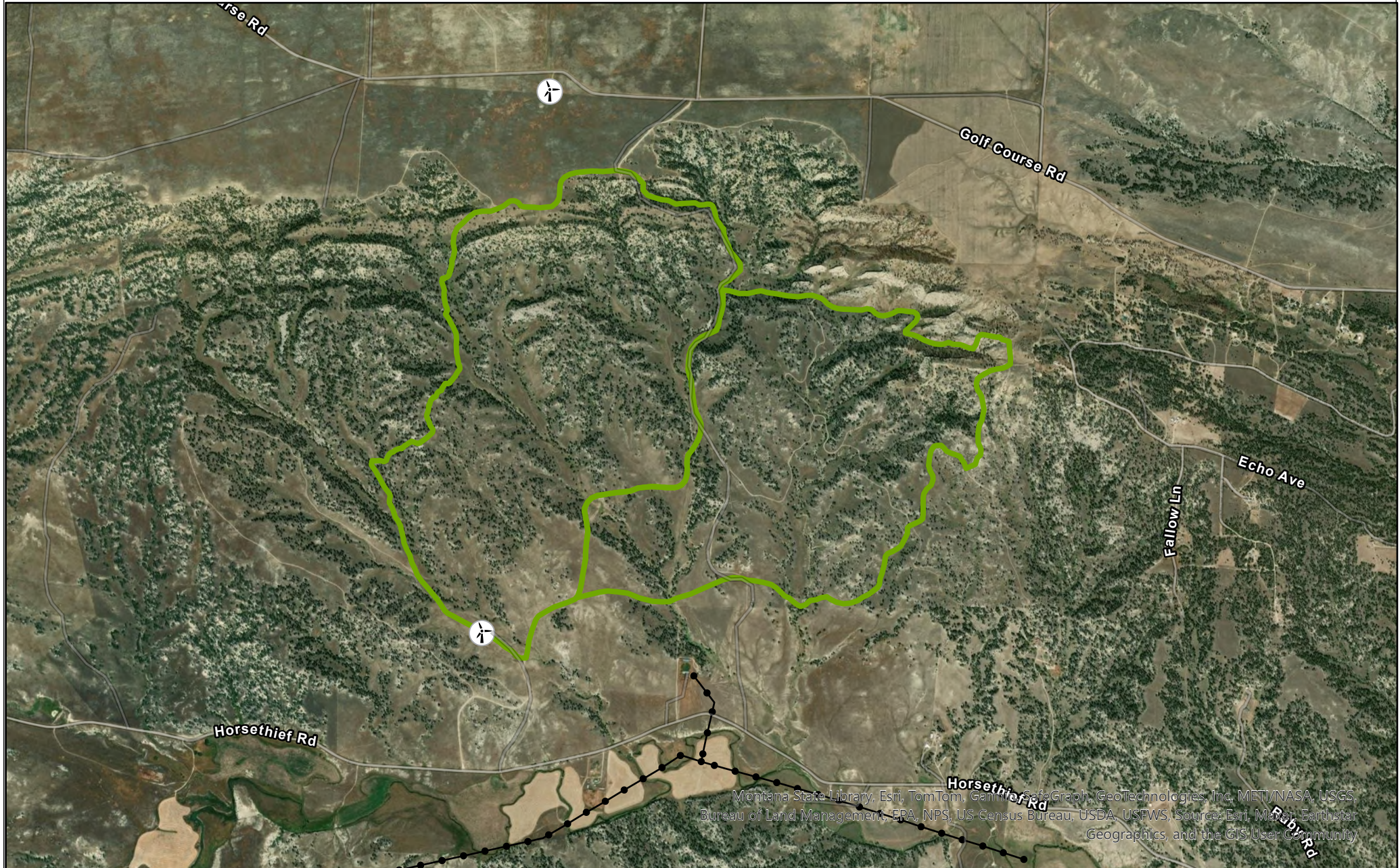




E bar R and Horsethief NE Rx Units

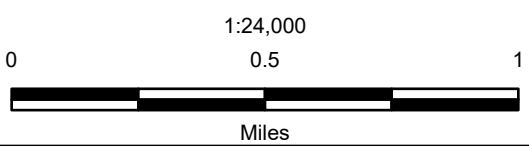
Creator: rmgriffin
Date: 9/27/2024



Montana State Library, Esri, TomTom, Garmin, SafeGraph, GeoTechnologies, Inc, METI/NASA, USGS, Bureau of Land Management, EPA, NPS, US Census Bureau, USDA, USFWS, Source: Esri, Maxar, Earthstar Geographics, and the GIS User Community

Legend

-  EbarR
-  Northeast Unit
-  Powerlines
-  Windmill




Document Path: \\blm\dfs\loc\BPM\TIB\BFO\projects\fuel\Program_of_Work\Horsethief\EbarR\EbarR_ArcPro.aprx

Projected Coordinate System: NAD 1983 Albers
Geographic Coordinate System: GCS North American 1983
Datum: D North American 1983

UNITED STATES DEPARTMENT OF THE INTERIOR
BUREAU OF LAND MANAGEMENT
MONTANA-DAKOTAS

CAUTION:
Land ownership data is derived from best available data from the 20000 scale base map. Therefore, land ownership may not be shown for parcels smaller than 40 acres, and land ownership lines may have plotting errors due to source data.



Information made by the Bureau of Land Management for the use of the data for purposes not intended by the BLM.