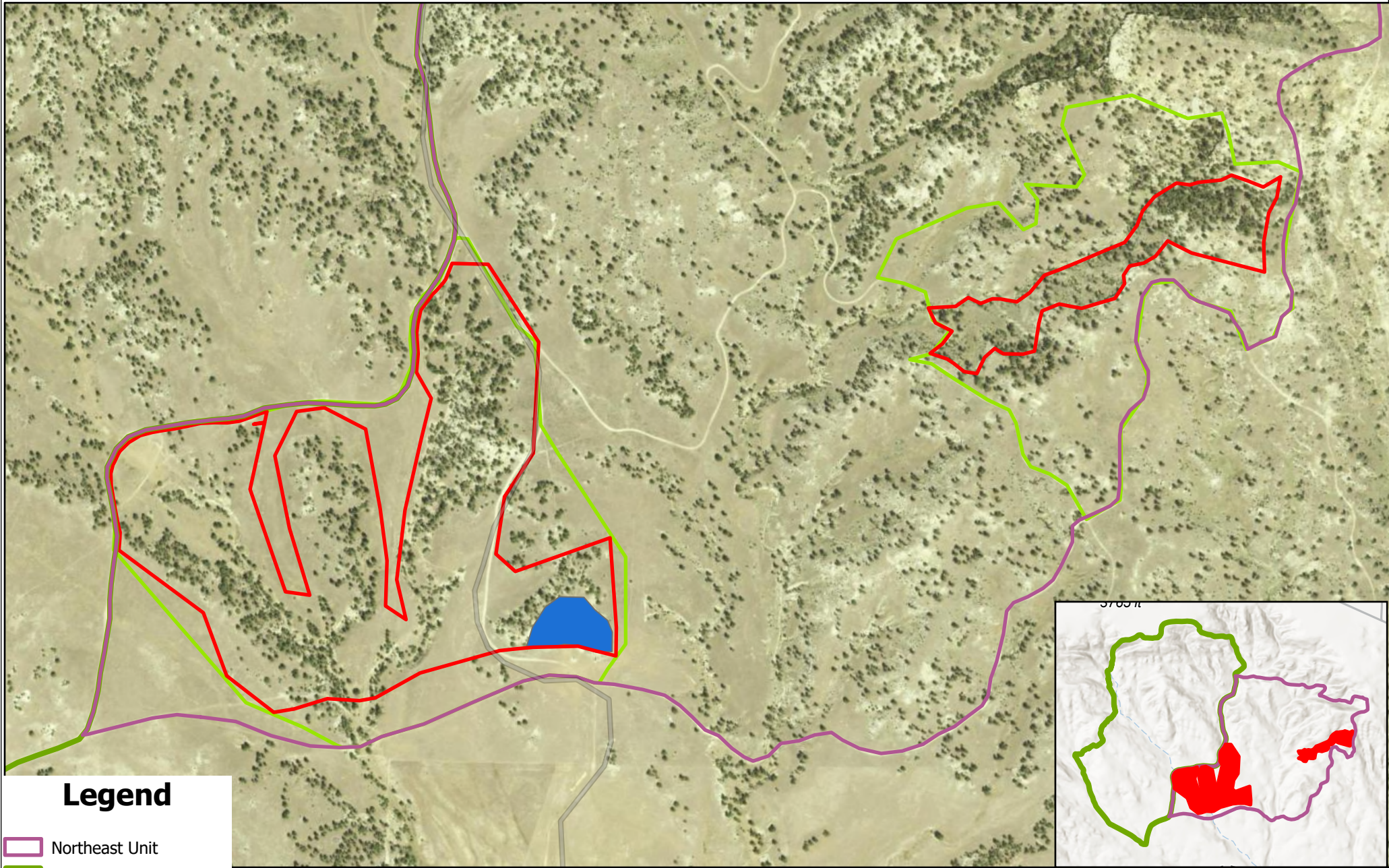









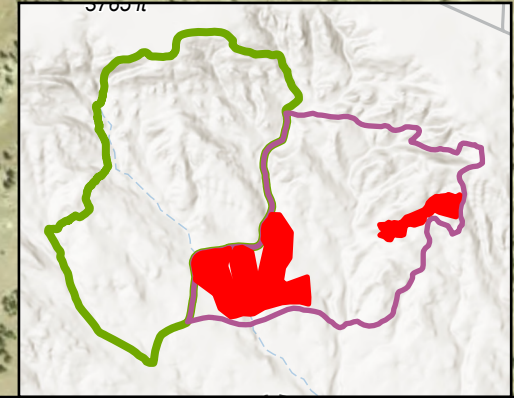
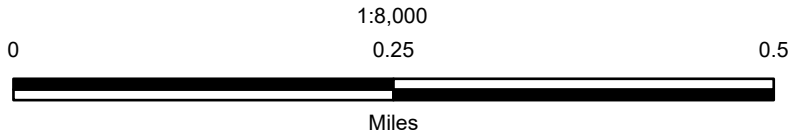
# Horsethief NE Mastication Units

Creator: rmgriffin  
Date: 9/27/2024



## Legend

-  Northeast Unit
-  EbarR2025
-  FY25 Mastication
-  Mechanical: Proposed
-  Additional thinning



Document Path: \\blm\dfs\loc\GBPMT\BIF\projects\fuel\Program\_of\_Work\Horsethief\Ebar\ESbarR\_Act\Pro.aprx

UNITED STATES DEPARTMENT OF THE INTERIOR  
BUREAU OF LAND MANAGEMENT  
MONTANA-DAKOTAS

**CAUTION:**  
Land ownership data is derived from best  
available data from the 2000 data base  
map. Therefore, land ownership may not be  
shown for parcels smaller than 40 acres, and  
land ownership lines may have plotting errors  
due to source data.

No warranty is made by the Bureau of Land Management  
for the use of the data for purposes not intended by the BLM.

