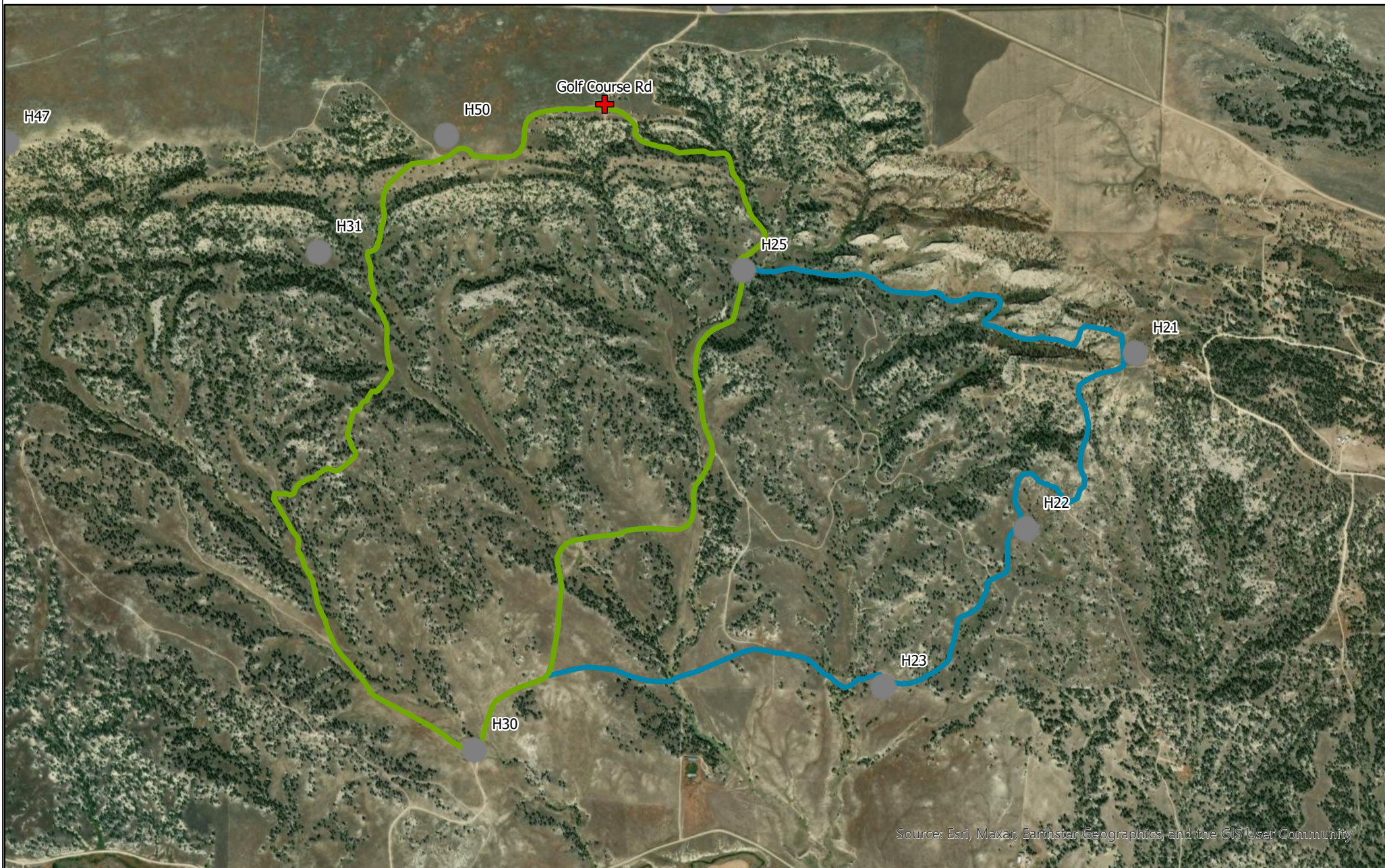




E bar R and Horsethief NE Rx Units

Creator: rmgriffin
Date: 9/27/2024

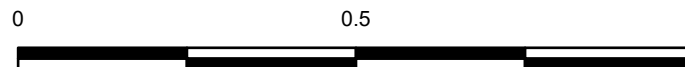


Source: Esri, Maxar, Earthstar Geographics, and the GIS User Community

Legend

-  Medivac Sites
-  Ambo Sites
-  EbarR
-  Northeast Unit

1:18,000



Miles

Document Path: \\blm\dfs\loc\BPM\TIB\F\projects\fuel\Program_of_Work\Horsethief\EbarR\EbarR_ArcPro.aprx

Projected Coordinate System: NAD 1983 Albers
Geographic Coordinate System: GCS North American 1983
Datum: D North American 1983

UNITED STATES DEPARTMENT OF THE INTERIOR
BUREAU OF LAND MANAGEMENT
MONTANA-DAKOTAS

CAUTION:
Land ownership data is derived from best
available data from the 20000 scale base
map. Therefore, land ownership may not be
shown for parcels smaller than 40 acres, and
land ownership lines may have plotting errors
due to source data.

Map made by the Bureau of Land Management
for the use of the data for purposes not intended by the BLM.

