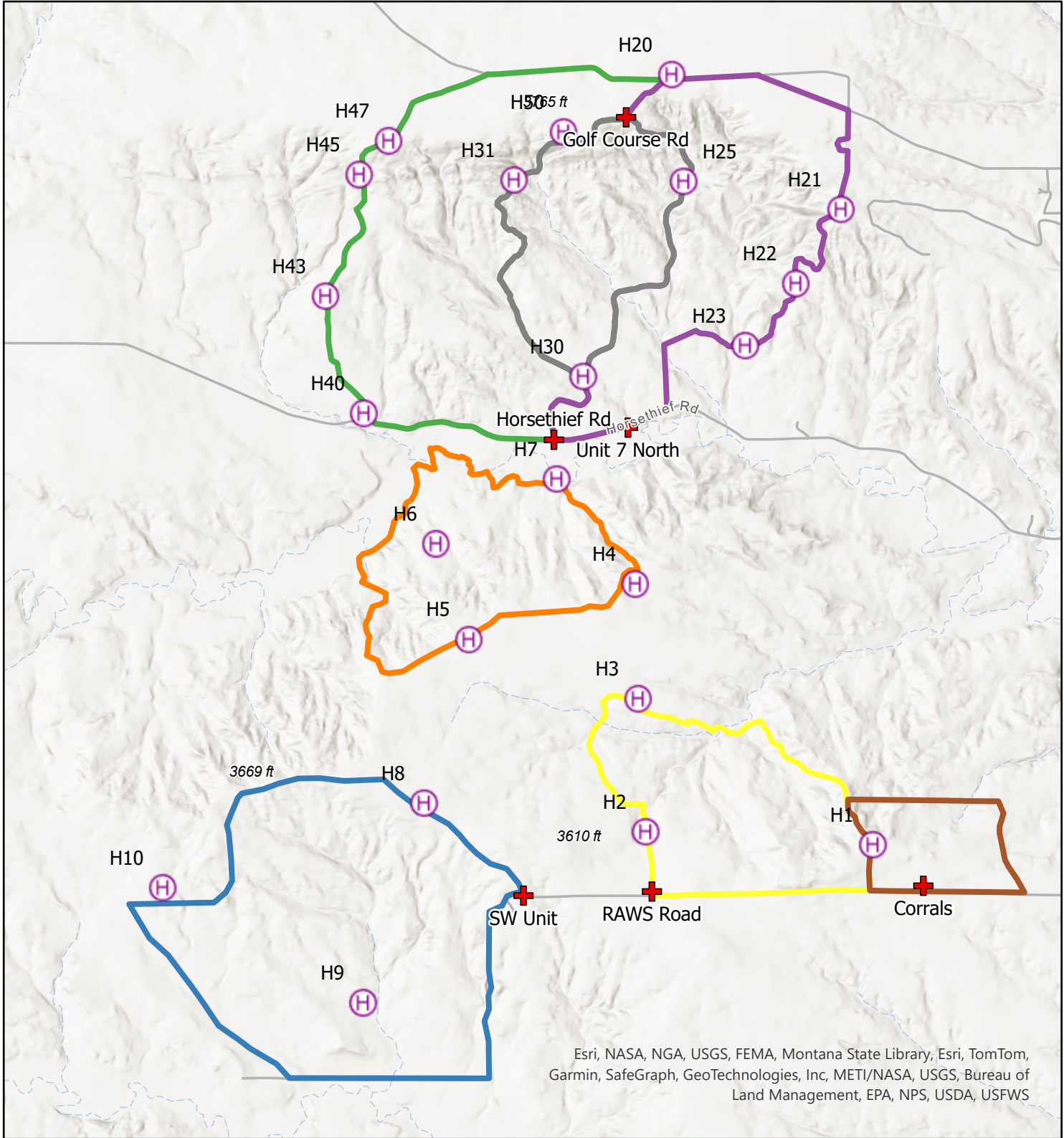




Horsethief Rx Units Medical Evacuation Sites

Creator: rmgriffin
Date: 8/16/2024



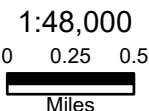
Esri, NASA, NGA, USGS, FEMA, Montana State Library, Esri, TomTom, Garmin, SafeGraph, GeoTechnologies, Inc, METI/NASA, USGS, Bureau of Land Management, EPA, NPS, USDA, USFWS

Legend

- Ground Extraction Sites
- Medivac Sites
- Silverspur Unit 1 & 2
- Silverspur Units 3-6
- Silverspur Unit 7
- Horsethief SW
- Horsethief NE
- Horsethief NW
- <all other values>

Document Path: \\blm\dfs\loc\GBP\MT\BIFO\projects\fuels\Program_of_Work\Horsethief\Burn Plan\Burn Plan.aprx

Projected Coordinate System: NAD 1983 Albers
Geographic Coordinate System: GCS North American 1983
Datum: D North American 1983



UNITED STATES DEPARTMENT OF THE INTERIOR
BUREAU OF LAND MANAGEMENT
MONTANA-DAKOTAS

CAUTION:
Land ownership data is derived from less accurate data than the 1:24000 scale base map. Therefore, land ownership may not be shown for parcels smaller than 40 acres, and land ownership lines may have plotting errors due to source data.

No warranty is made by the Bureau of Land Management for the use of the data for purposes not intended by the BLM.