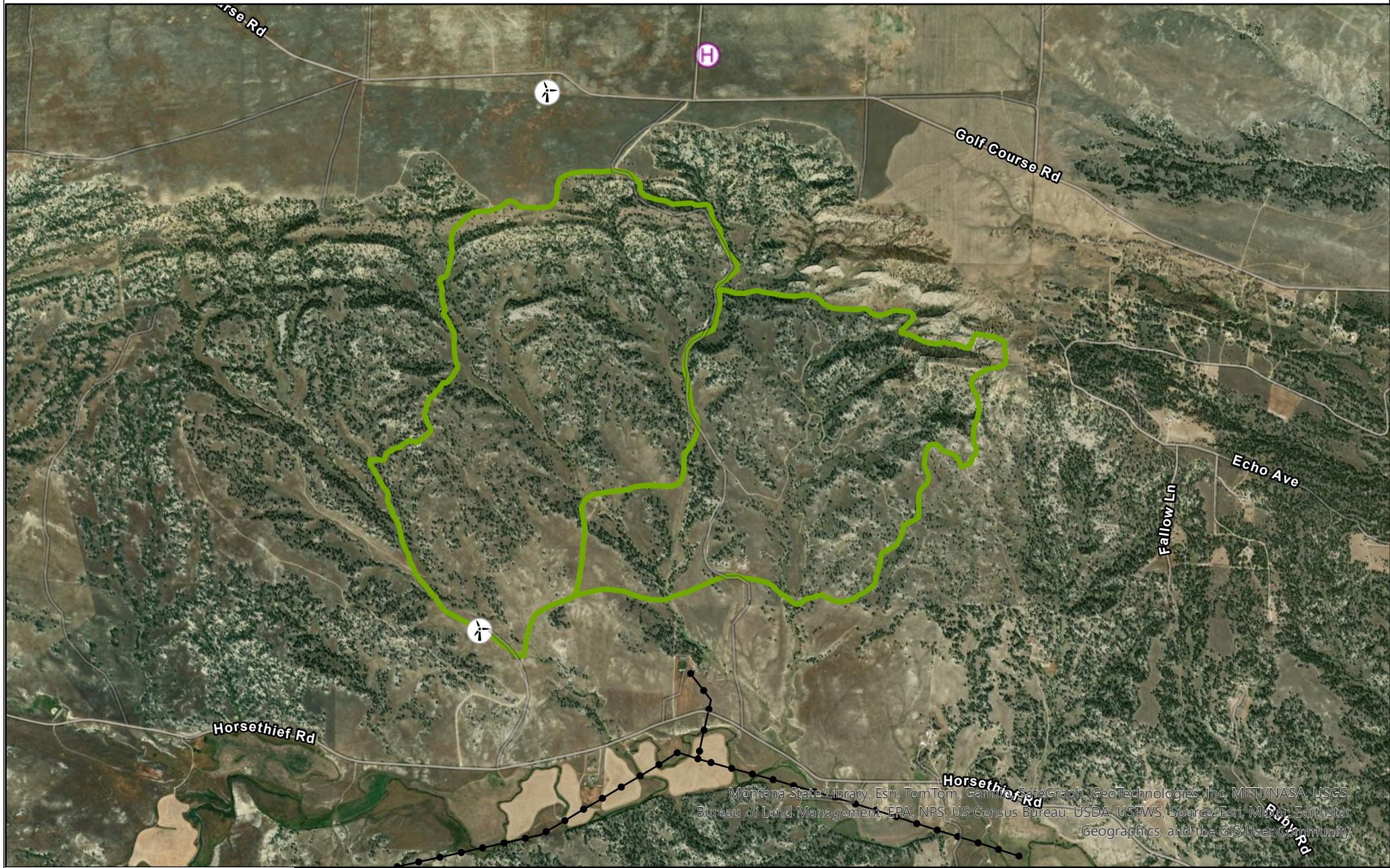




E bar R and Horsethief NE Rx Units Aviation Hazards

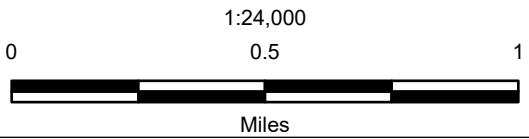
Creator: rmgriffin
Date: 10/18/2024



Montana State Library, Esri, TomTom, Garmin, SafeGraph, GeoTechnologies, Inc, METI/NASA, USGS, Bureau of Land Management, EPA, NPS, US Census Bureau, USDA, USFWS, Source: Esri, Maxar, Earthstar Geographics, and the GIS User Community

Legend

- EbarR
- Northeast Unit
- Powerlines
- Windmill
- Helibase



Document Path: \\blm\dfs\loc\BGPMT\BIFO\projects\fuel\Program_of_Work\Horsethief\EbarR\EbarR_ArcPro.aprx
 UNITED STATES DEPARTMENT OF THE INTERIOR
 BUREAU OF LAND MANAGEMENT
 MONTANA-DAKOTAS
 CAUTION: Land ownership data is derived from best available data from the 20000 scale base map. Therefore, land ownership may not be shown for parcels smaller than 40 acres, and land ownership lines may have plotting errors due to source data.
 This map was made by the Bureau of Land Management for the use of the data for purposes not intended by the BLM.

