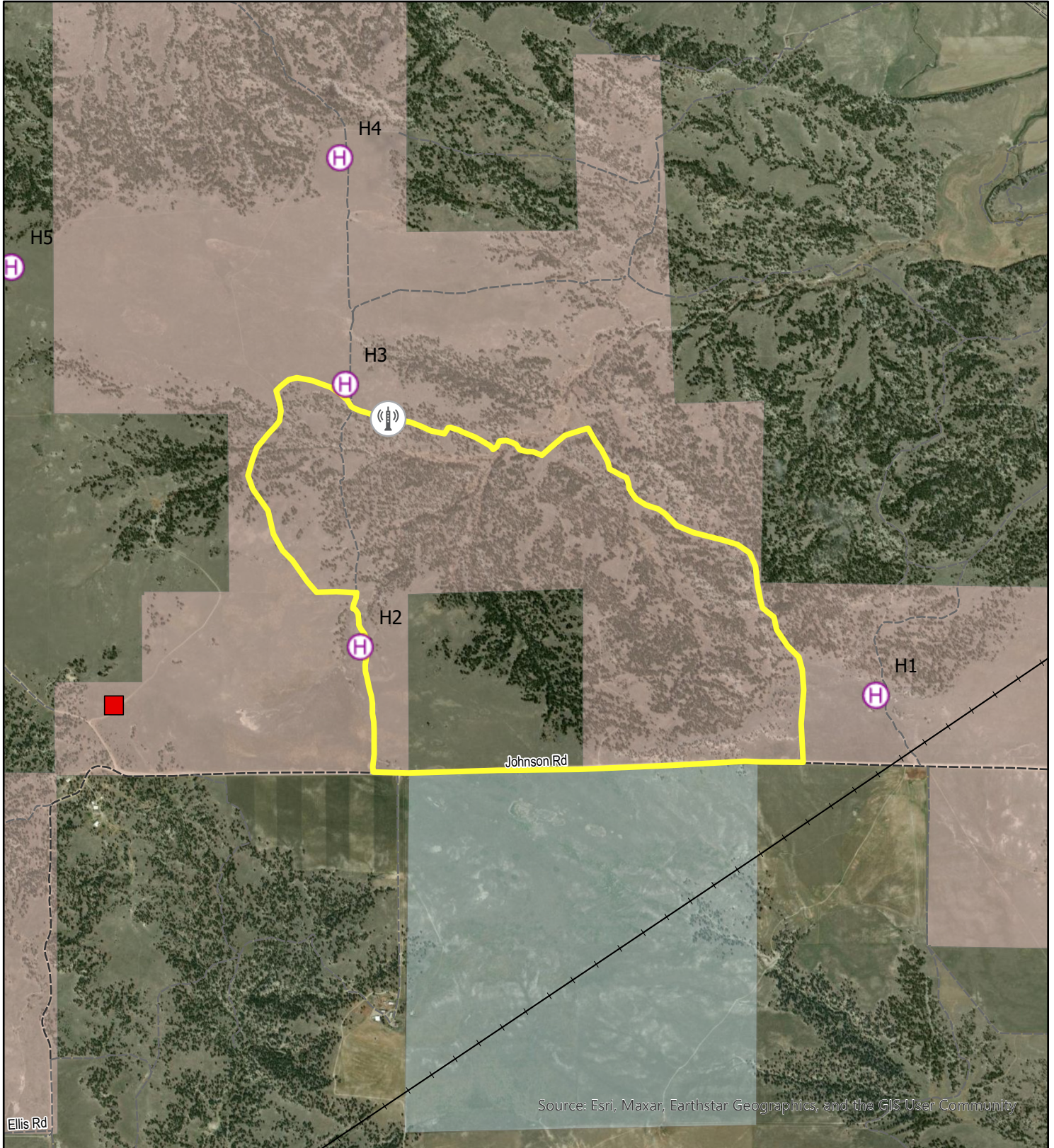




Silverspur Units 3-6 Rx Aviation Hazards

Creator: rmgriffin
Date: 11/29/2023



Source: Esri, Maxar, Earthstar Geographics, and the GIS User Community

Document Path: T:\MT\Admin_Unit\Billings\Projects\Fire_Fuels_Forestry_Aviation\Program_of_Work\Fuels_Management\Horsethief\Burn Plan\Burn Plan.aprx

Legend

- Unit Name
 - Silverspur Units 3-6
- Surface Lands
 - BLM - Land Use (Bankhead Jones)
 - State Land
 - Private or Undetermined
- Powerlines
 - Powerlines
- Medivac Sites
 - H Medivac Sites
- RAWS
 - (H) RAWS
- Helibase
 - Helibase

Projected Coordinate System: NAD 1983 Albers
Geographic Coordinate System: GCS North American 1983
Datum: D North American 1983

1:24,000

0 0.25 0.5



UNITED STATES DEPARTMENT OF THE INTERIOR
BUREAU OF LAND MANAGEMENT
MONTANA-DAKOTAS

CAUTION:
Land ownership data is derived from less accurate data than the 1:24000 scale base map. Therefore, land ownership may not be shown for parcels smaller than 40 acres, and land ownership lines may have plotting errors due to source data.

No warranty is made by the Bureau of Land Management for the use of the data for purposes not intended by the BLM.