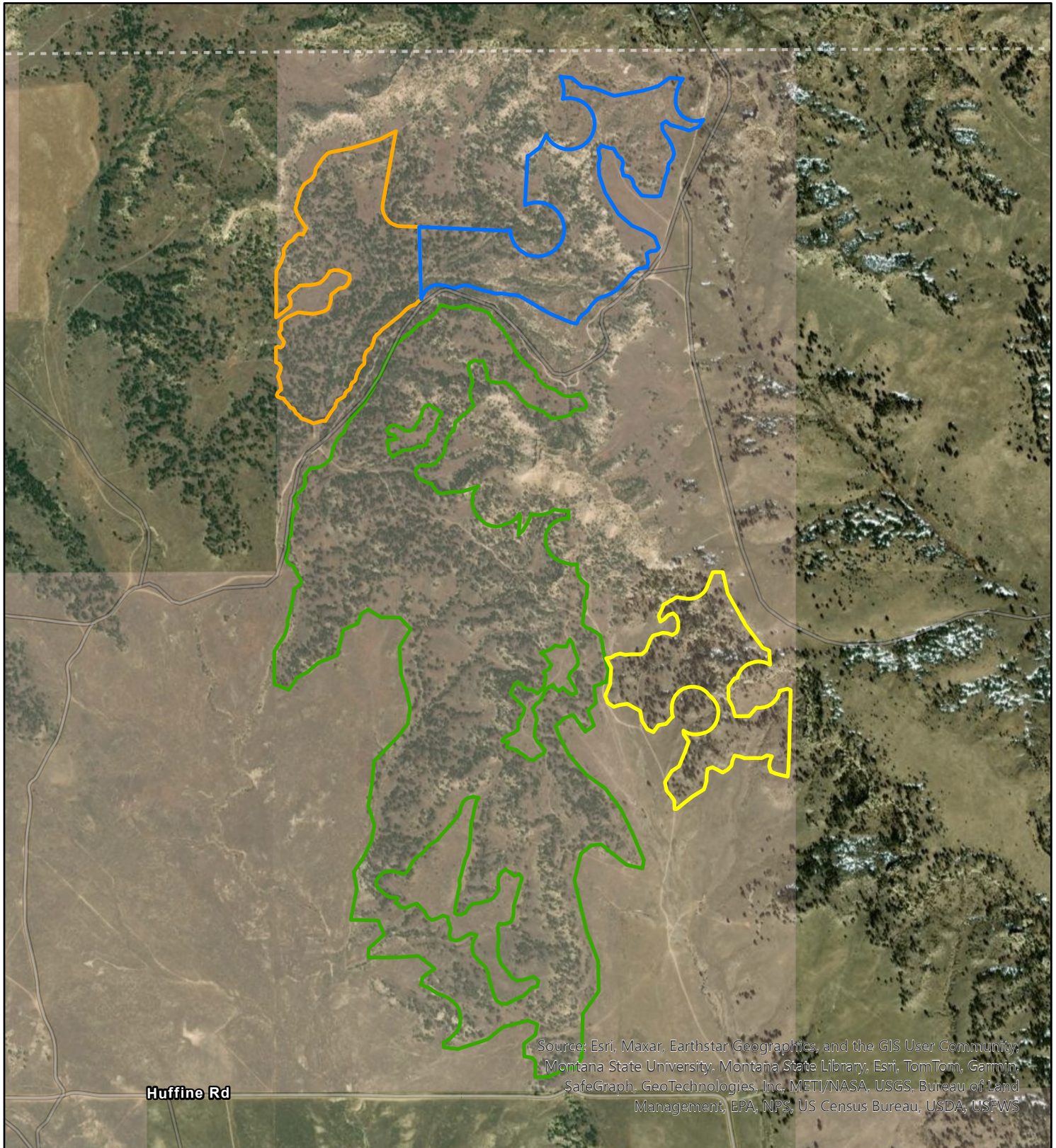




FY25 Steamboat Contract Mastication

476.2 Acres

Creator: rmgriffin
Date: 3/21/2025



Source: Esri, Maxar, Earthstar Geographics, and the GIS User Community; Montana State University, Montana State Library, Esri, TomTom, Garmin, SafeGraph, GeoTechnologies, Inc, METI/NASA, USGS, Bureau of Land Management, EPA, NPS, US Census Bureau, USDA, USFWS

Legend

Document Path: \\blm\dfs\loc\BP\MT\B\FO\projects\fuels\Program_of_Work\Steamboat_Butte\Contract_Mastication\Steamboat_Butte_Contract_Mastication_FY25.aprx

Mastication Units

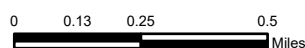
- FY25 Baseline (Unit 1) 307 Acres
- Option Unit 2 59.7 Acres
- Option Unit 3 65.3 Acres
- Option Unit 4 44.2 Acres

Surface Lands

- BLM - Land Use (Bankhead Jones)

Projected Coordinate System: NAD 1983 Albers
Geographic Coordinate System: GCS North American 1983
Datum: D North American 1983

1:24,000



UNITED STATES DEPARTMENT OF THE INTERIOR
BUREAU OF LAND MANAGEMENT
MONTANA-DAKOTAS

CAUTION:
Land ownership data is derived from less accurate data than the 1:24,000 scale base map. Therefore, land ownership may not be shown for parcels smaller than 40 acres, and land ownership lines may have plotting errors due to source data.

No warranty is made by the Bureau of Land Management for the use of the data for purposes not intended by the BLM.

