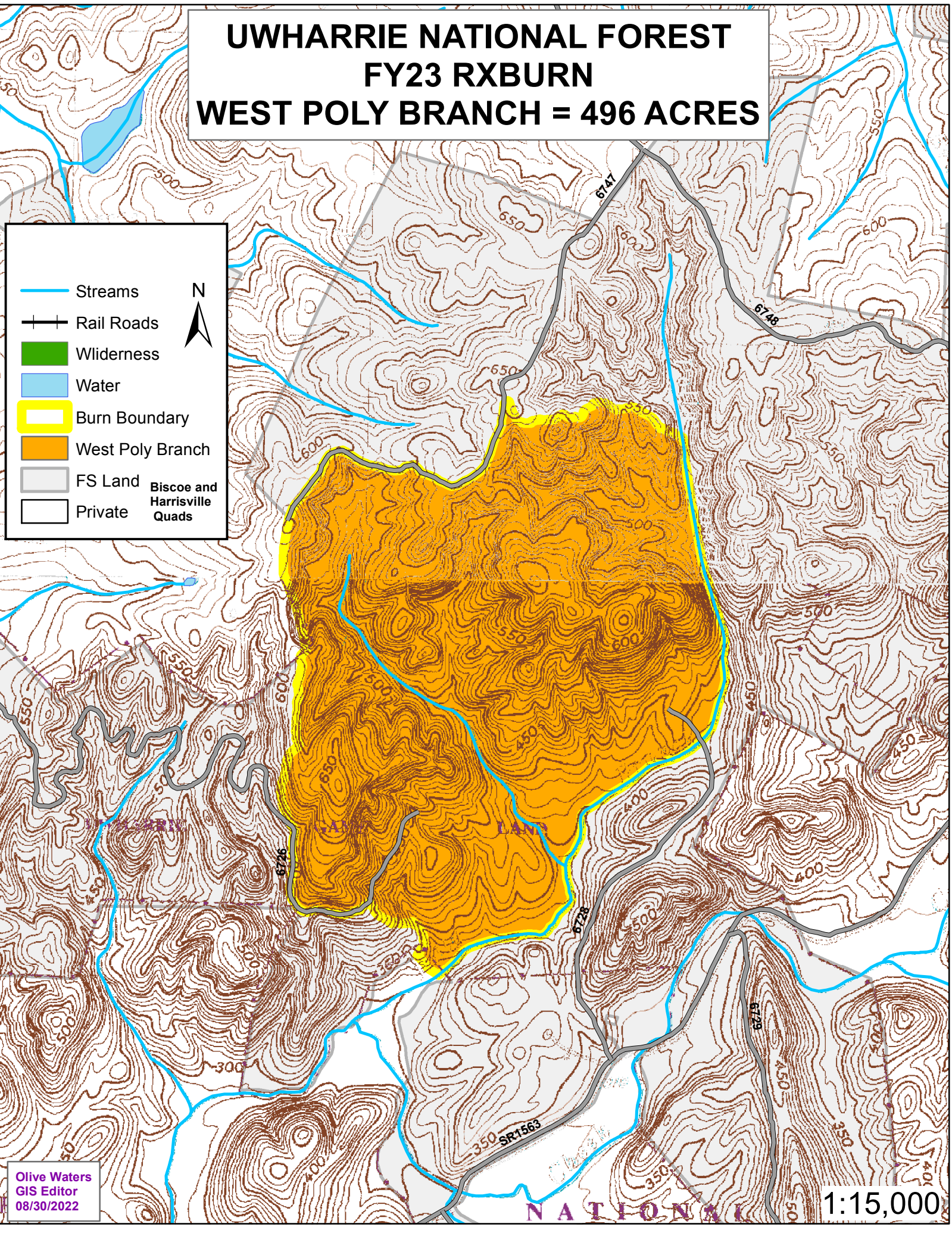


UWHARRIE NATIONAL FOREST FY23 RXBURN WEST POLY BRANCH = 496 ACRES

Legend:

- Streams
- Rail Roads
- Wilderness
- Water
- Burn Boundary
- West Poly Branch
- FS Land
- Private

Biscoe and Harrisville Quads



Olive Waters
GIS Editor
08/30/2022

1:15,000