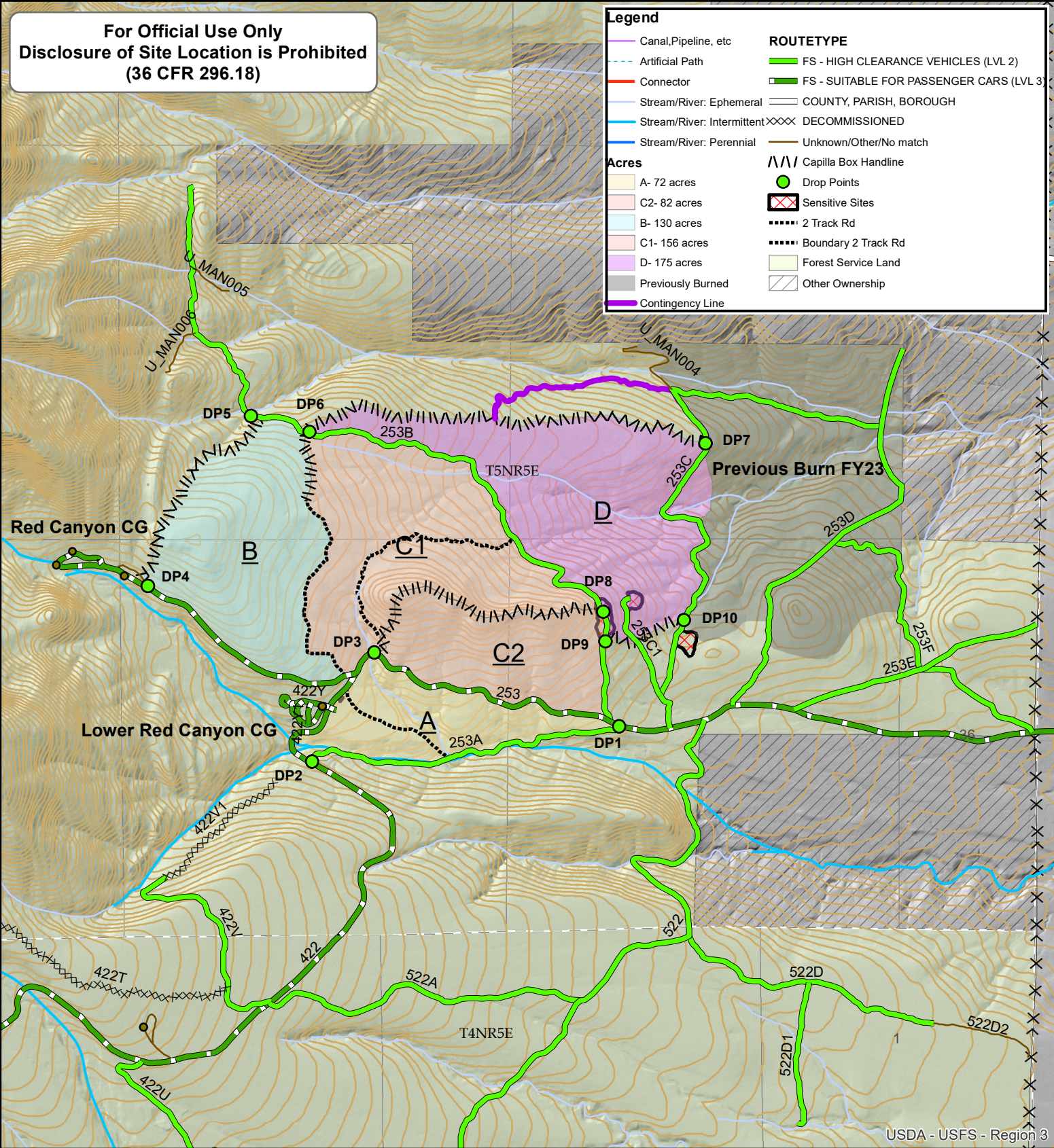




**For Official Use Only**  
**Disclosure of Site Location is Prohibited**  
**(36 CFR 296.18)**

**Legend**

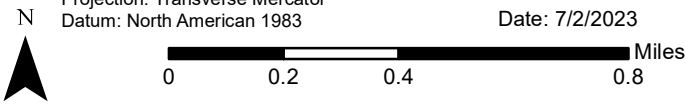
Canal, Pipeline, etc	<b>ROUTETYPE</b>
Artificial Path	FS - HIGH CLEARANCE VEHICLES (LVL 2)
Connector	FS - SUITABLE FOR PASSENGER CARS (LVL 3)
Stream/River: Ephemeral	COUNTY, PARISH, BOROUGH
Stream/River: Intermittent	DECOMMISSIONED
Stream/River: Perennial	Unknown/Other/No match
<b>Acres</b>	Capilla Box Handline
A- 72 acres	Drop Points
C2- 82 acres	Sensitive Sites
B- 130 acres	2 Track Rd
C1- 156 acres	Boundary 2 Track Rd
D- 175 acres	Forest Service Land
Previously Burned	Other Ownership
Contingency Line	



USDA - USFS - Region 3

Coordinate System: NAD 1983 UTM Zone 13N  
Projection: Transverse Mercator  
Datum: North American 1983

Date: 7/2/2023



Data Sources:

USDA is an equal opportunity provider, employer, and lender.

This product is reproduced from geospatial information prepared by the USDA Forest Service. Geospatial information and GIS product accuracy may vary. Using GIS products for purposes other than those for which they were created may yield inaccurate or misleading results. USDA Forest Service reserves the right to