

Ranch Supply Rx Air Operations Map

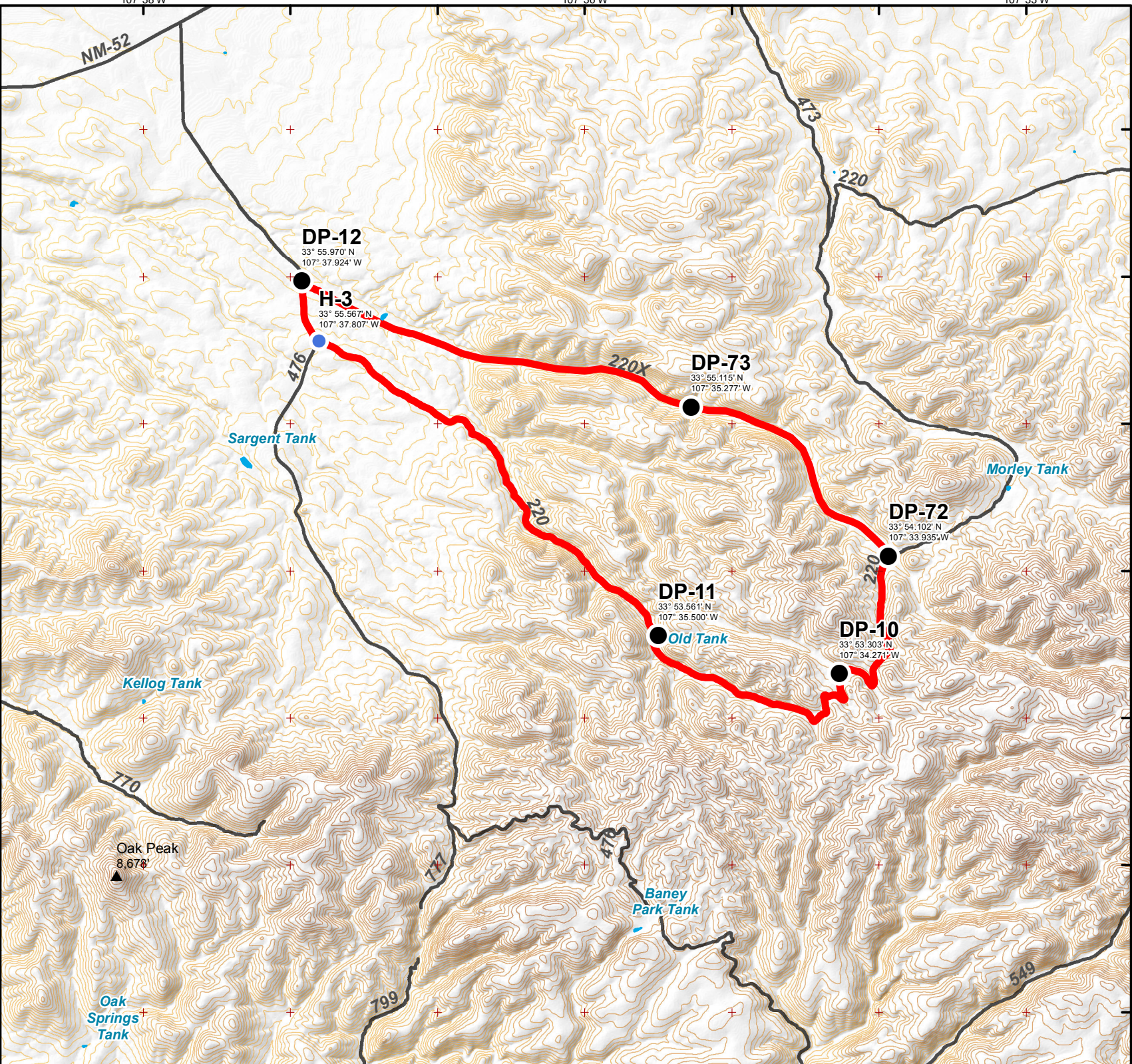
North American Datum of 1983
(World Geodetic System 1984)

Legend

- Drop Point
- Helispot

Contours by Elevation (Feet)

- 7,201 - 7,300
- 7,301 - 7,400
- 7,401 - 7,500
- 7,501 - 7,600
- 7,601 - 7,700
- 7,701 - 7,800
- 7,801 - 7,900
- 7,901 - 8,000
- 8,001 - 8,100
- 8,101 - 8,200
- 8,201 - 8,300
- 8,301 - 8,400
- 8,401 - 8,500
- 8,501 - 8,600
- 8,601 - 8,700
- 8,701 - 8,800
- 8,801 - 8,900



DP-12

33° 55.970' N
107° 37.924' W

H-3

33° 55.567' N
107° 37.807' W

DP-73

33° 55.115' N
107° 35.277' W

DP-11

33° 53.561' N
107° 35.500' W

DP-10

33° 53.303' N
107° 34.271' W

DP-72

33° 54.102' N
107° 33.935' W

Oak Peak
8,678'



Miles

kbarron 12/3/2020
1437 hrs