









Ranch Supply Rx Travel Map

North American Datum 1983
UTM Zone 13 North

Legend

-  Travel Route
-  Drop Point
-  Helispot
-  US Hwy
-  State Route
-  County Road
-  Main FS Road

Unit Name
 Ranch Supply 1

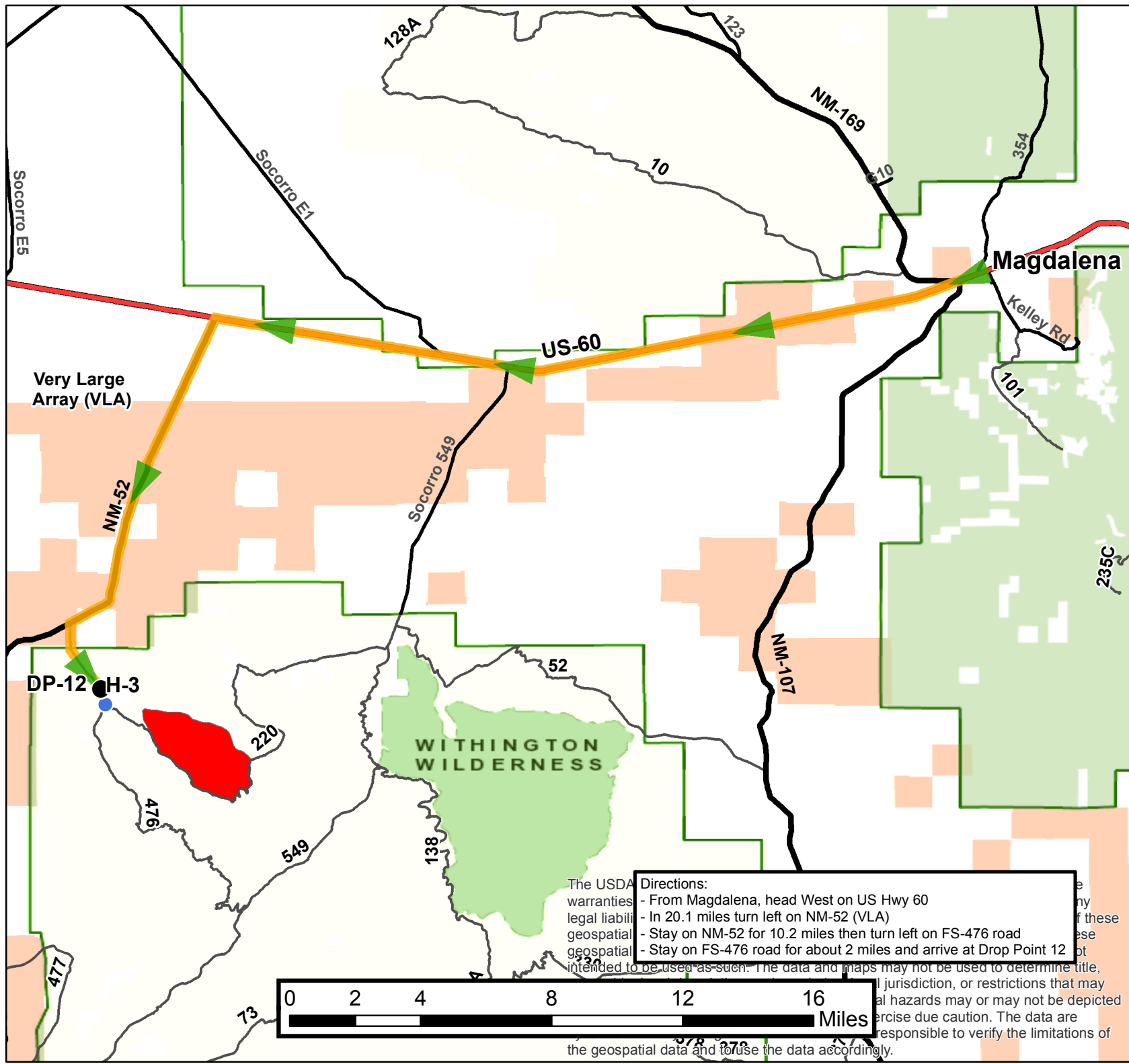
Travel Route
 Distance: 32.74 miles
 ETA: ~ 45 minutes to 1 hour

DP-12 Location:
 Lat: 33° 55.970' N
 Long: 107° 37.924' W

H-3 Location:
 Lat: 33° 55.567' N
 Long: 107° 37.807' W



kbarron 1/13/2022
1116 hrs



The USDA warrants no legal liability for geospatial data intended to be used as such. The data and maps may not be used to determine title, jurisdiction, or restrictions that may pose legal hazards or may not be depicted. Exercise due caution. The data are the responsibility of the user to verify the limitations of the geospatial data and to use the data accordingly.

Directions:

- From Magdalena, head West on US Hwy 60
- In 20.1 miles turn left on NM-52 (VLA)
- Stay on NM-52 for 10.2 miles then turn left on FS-476 road
- Stay on FS-476 road for about 2 miles and arrive at Drop Point 12