

### District Map - Espanola Caja Santa Fe National Forest

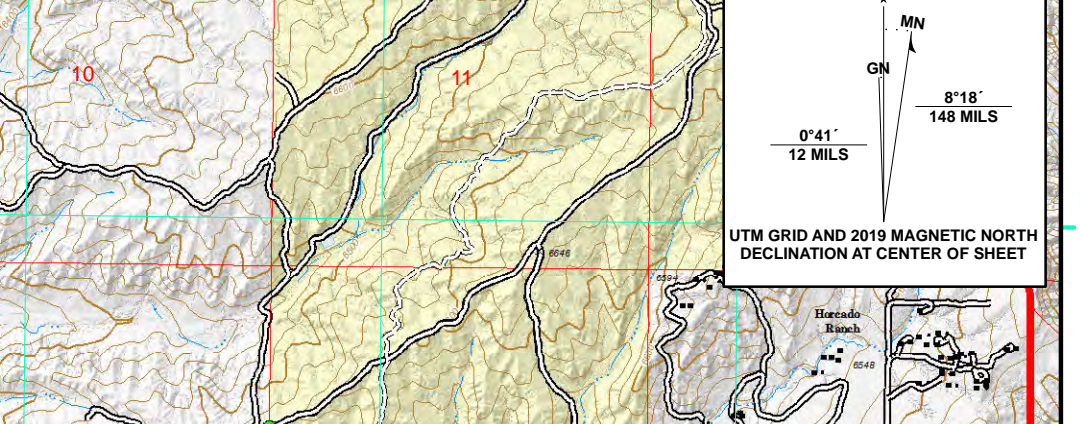
Water Source	Road Open to Public	Range Infrastructure
Fire Station	Road Closed to Public Motorized Use	Cattle Guard
Santa Fe County Fire Hydrant	Closed or Decommissioned Road	Corral
Helibase	Trail	Water Trough
Tower, Lookout	Road/Trail Unclassified	Storage Tank
Tower, Other	Utility Line	Pi Tank
Weather Station	Pipeline (Buried)	Water Well
Gas	Aqueduct/Canal	Fence
Mile Post		

Scale: 0 0.25 0.5 1 1.5 2 Miles  
1:32,000

ATTENTION: This product is a reproduction of geospatial information prepared by the U.S. Department of Agriculture. It is not intended for use in any other context. The user assumes all liability for any use of this information other than that for which it was prepared. The user assumes all liability for any use of this information other than that for which it was prepared. The user assumes all liability for any use of this information other than that for which it was prepared.

USDA  
Santa Fe National Forest District  
District Office: 2001 Highway 140, Espanola, NM 87531  
District Phone: 505/833-5200  
Data Projection: UTM Zone 12 North, Santa Fe NAD 83  
Date: 02/20/2019

UTM GRID AND 819 MAGNETIC NORTH DECLINATION AT CENTER OF SHEET



### Santa Fe NF District Maps


Scale: 0 5 10 20 Miles