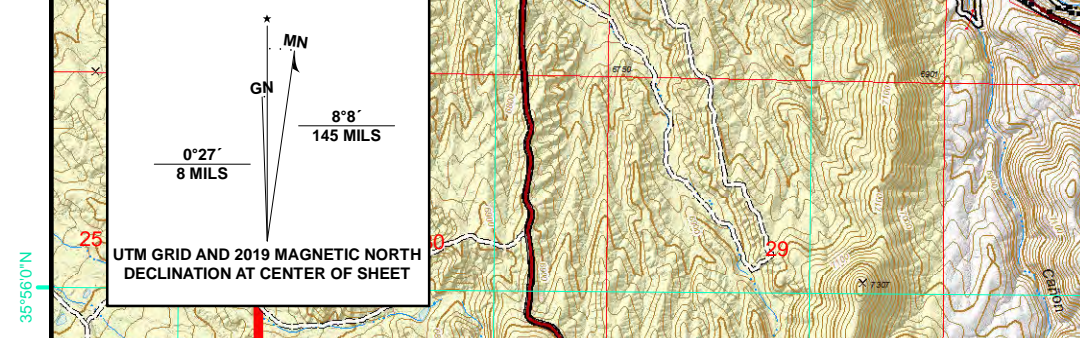
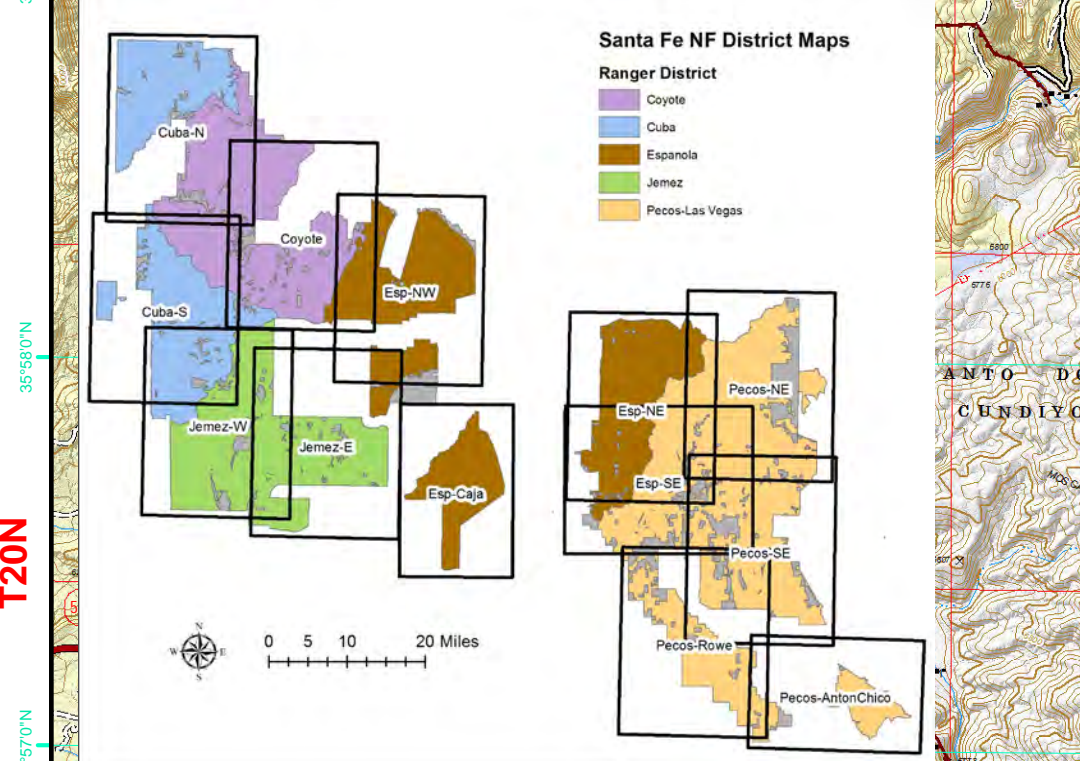


District Map - Espanola NE
Santa Fe National Forest

- | | | |
|------------------------|-------------------------------------|----------------------|
| Water Source | Road Open to Public | Range Infrastructure |
| Fire Station | Road Closed to Public Motorized Use | Cattleguard |
| SF County Fire Hydrant | Closed or Decommissioned Road | Corral |
| Tower, Other | Trail | Spring Well |
| Weather Station | Road/Trail Undesignated | Storage Tank |
| Gate | Utility Line | Pit Tank |
| Mile Post | Utility Line Buried (AMEC) | Fence |
| | Pipeline (Buried) | |
| | Acequia/Canal | |

0 0.25 0.5 1 1.5 2
 Miles

1:36,000
 This product is reproduced from geographic information prepared by the U.S. Department of Agriculture, Forest Service. It is not intended to be used for any purpose other than that for which it was prepared. It is not intended to be used for any purpose other than that for which it was prepared. It is not intended to be used for any purpose other than that for which it was prepared. It is not intended to be used for any purpose other than that for which it was prepared.



R9E R10E R11E R12E R13E
 T17N T18N T19N T20N T21N