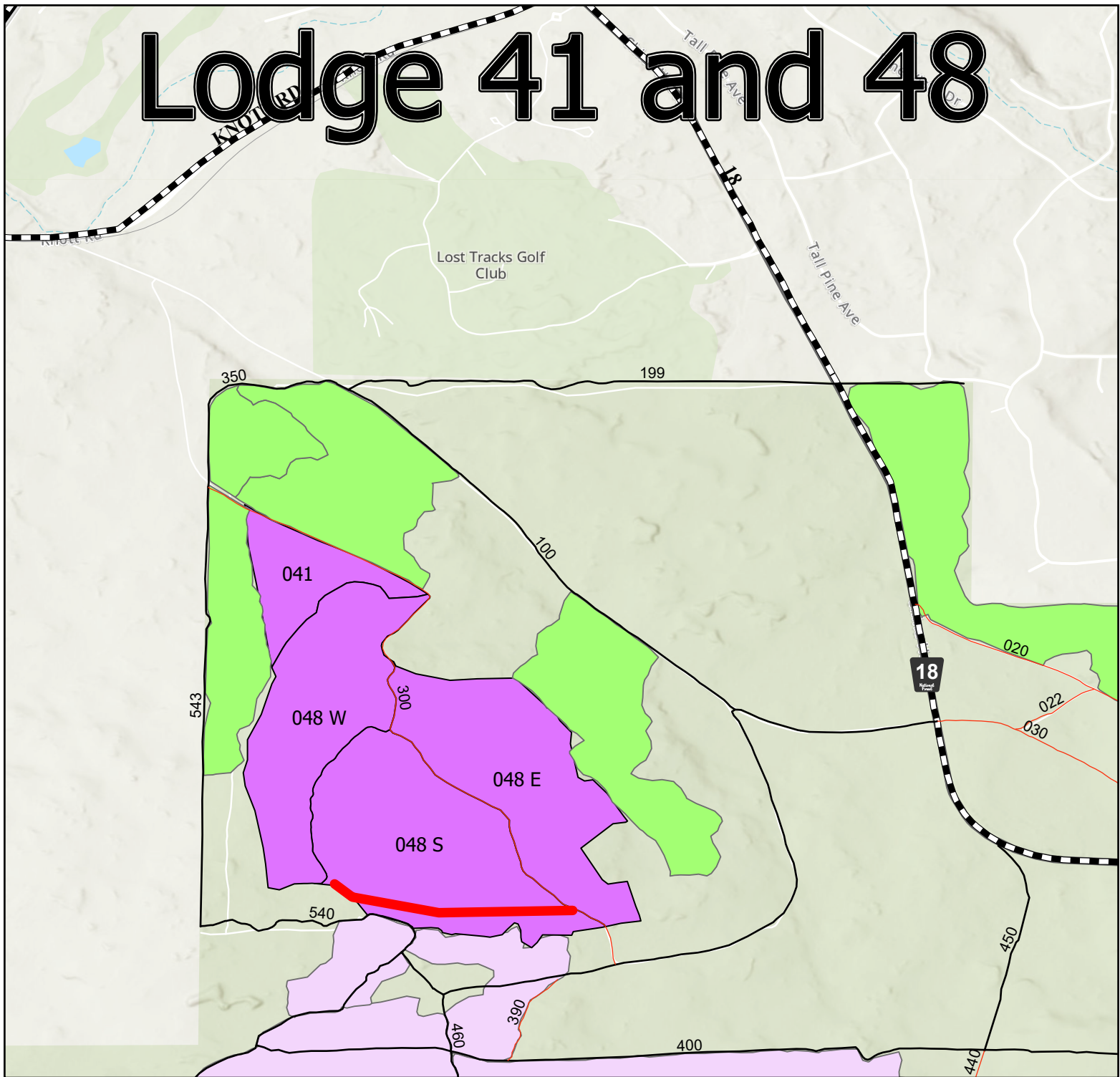


# Lodge 41 and 48



**041**-Radial thin all trees less than 9" DBH 20' around remnant trees. In open unit thin with a 20'x20' spacing, overstory included in spacing. PP preferred leave species over LP. Cut all western juniper up to 8.9" DBH. Limb and buck 6' for piling.

**048**-Thin all trees less than 9" 20 x 20 foot spacing. (Spacing may vary +/- 15' to leave best available tree) PP preferred leave species over LP. Cut all western juniper up to 8.9" DBH. Limb and buck 6' for piling.

Red line on South end of 048 S is flagged in yellow. Do not cross!

## Legend

- Buffer
- Final\_Lodge\_Units
- Lodge Thinning Units
- MokkiUnits\_FINAL

