

Tower Subdivision 68 Map



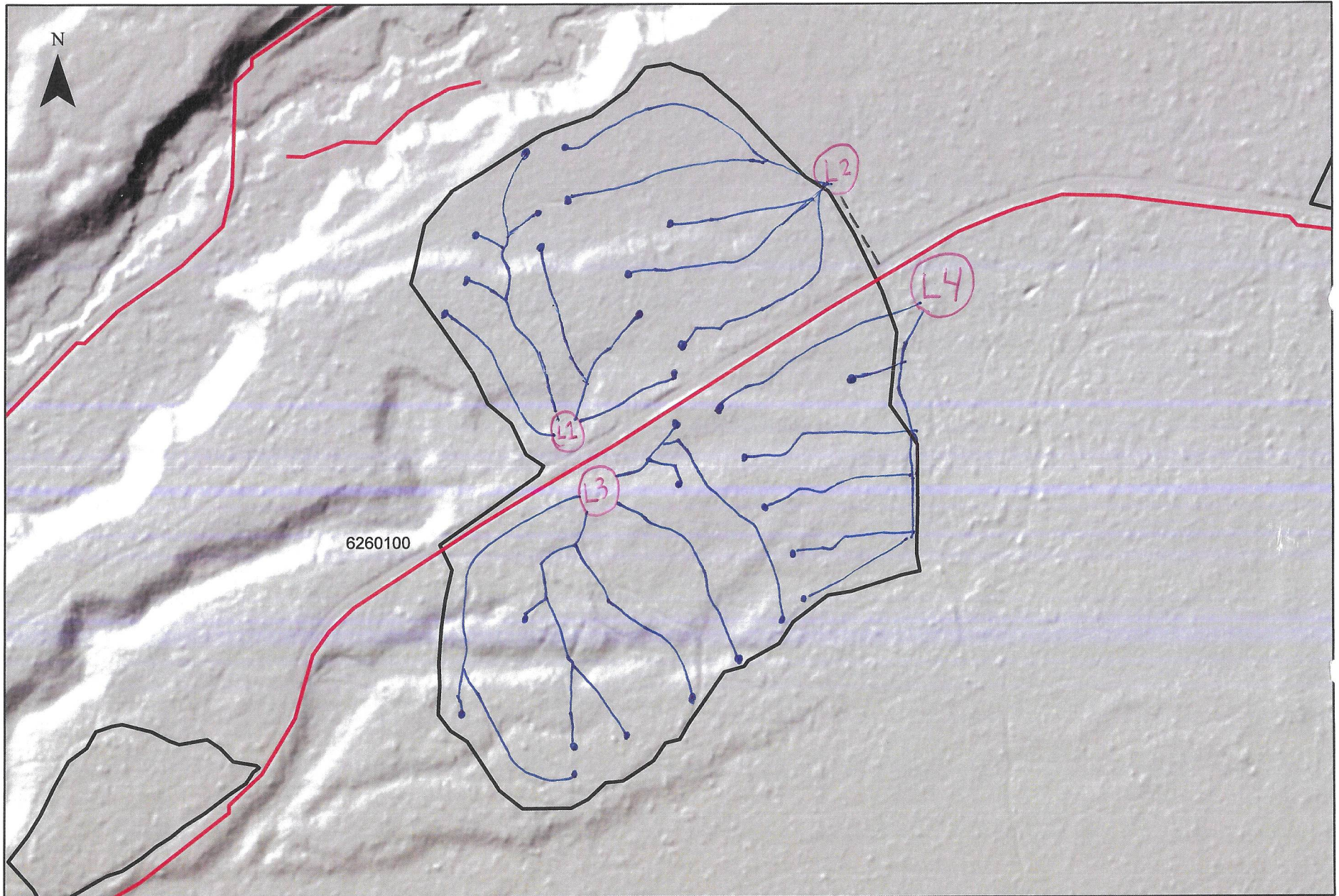
0 80 160 320 Feet

- Ⓛ = Landing
- = Skid trail
- = Temporary Road

Tower Unit 68 Map
Deer Creek Falls Area
Created by Nicholas R Mero
06-08-20

* Map not to scale

Tower Subdivision 51 Map



0 190 380 760 Feet

- (L) = Landing
- = Skid trail
- - - - = Temporary Road

Tower Unit 51 Map
Deer Creek Area
Created by Nicholas R Mero
06-05-2020

* Map not to scale

Tower Subdivision 52 Map



0 120 240 480 Feet

(L) = Landing
— = Skid Trail

Tower Unit 52 Map
Deer Creek Falls Area
Created by Nicholas R Mero
06-08-20

* Map not to scale

Tower Subdivision 60 Map



230 115 0 230 460 690 Feet



Legend

- ◆ Known Survey Monuments
- Tower Roads
- units

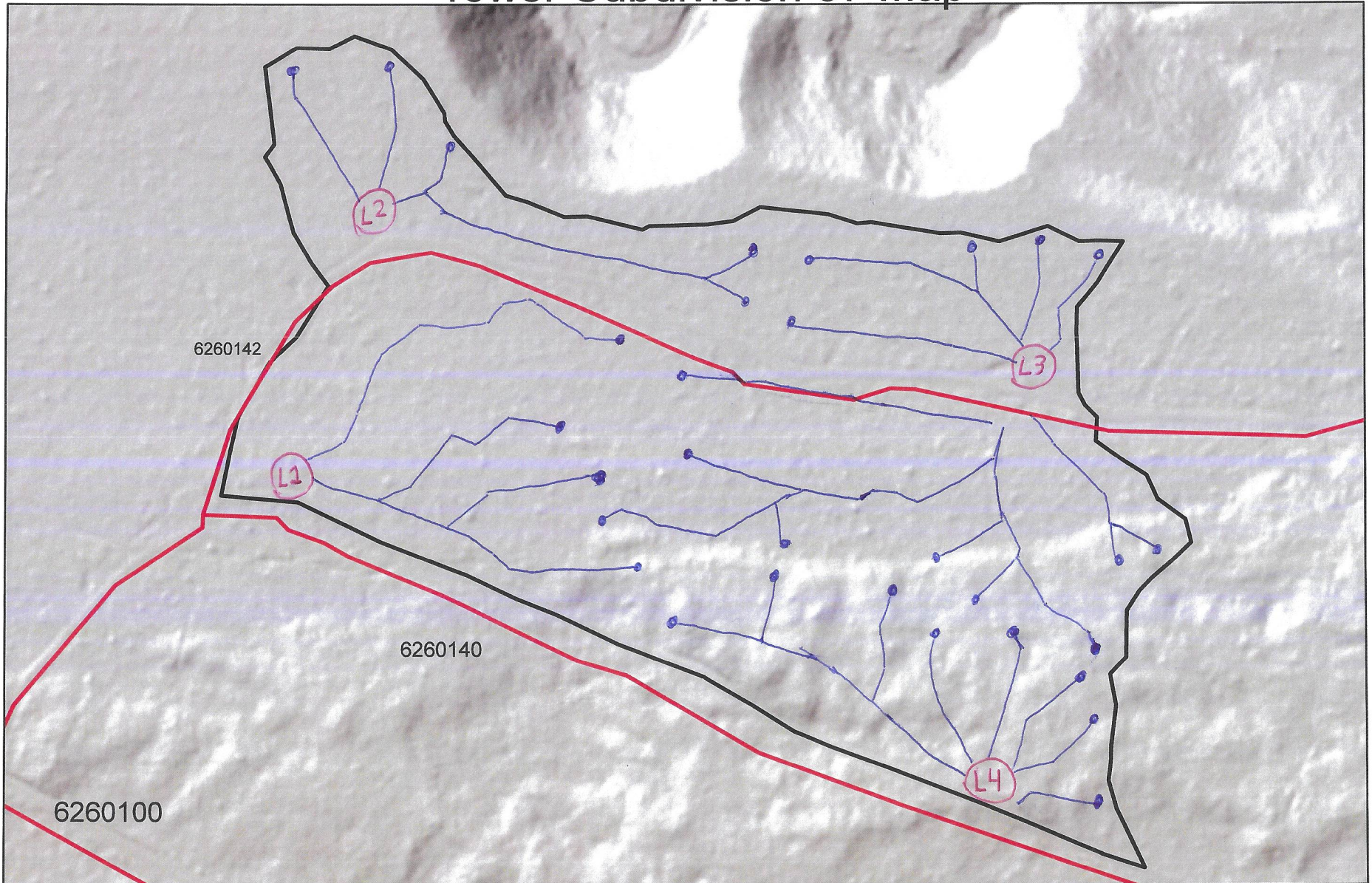
6260130 is an open/close road
K-F.3.1#

- Ⓛ = Landing
- = Skid trail
- = Temporary Road

Tower Unit 60 Map (28 acres)
Whiskey Creek Area
Created by Nicholas R Mero
03-03-20

* Map not to scale

Tower Subdivision 57 Map



160 80 0 160 320 480 Feet



Legend

- ◆ Known Survey Monuments
- Tower Roads
- units

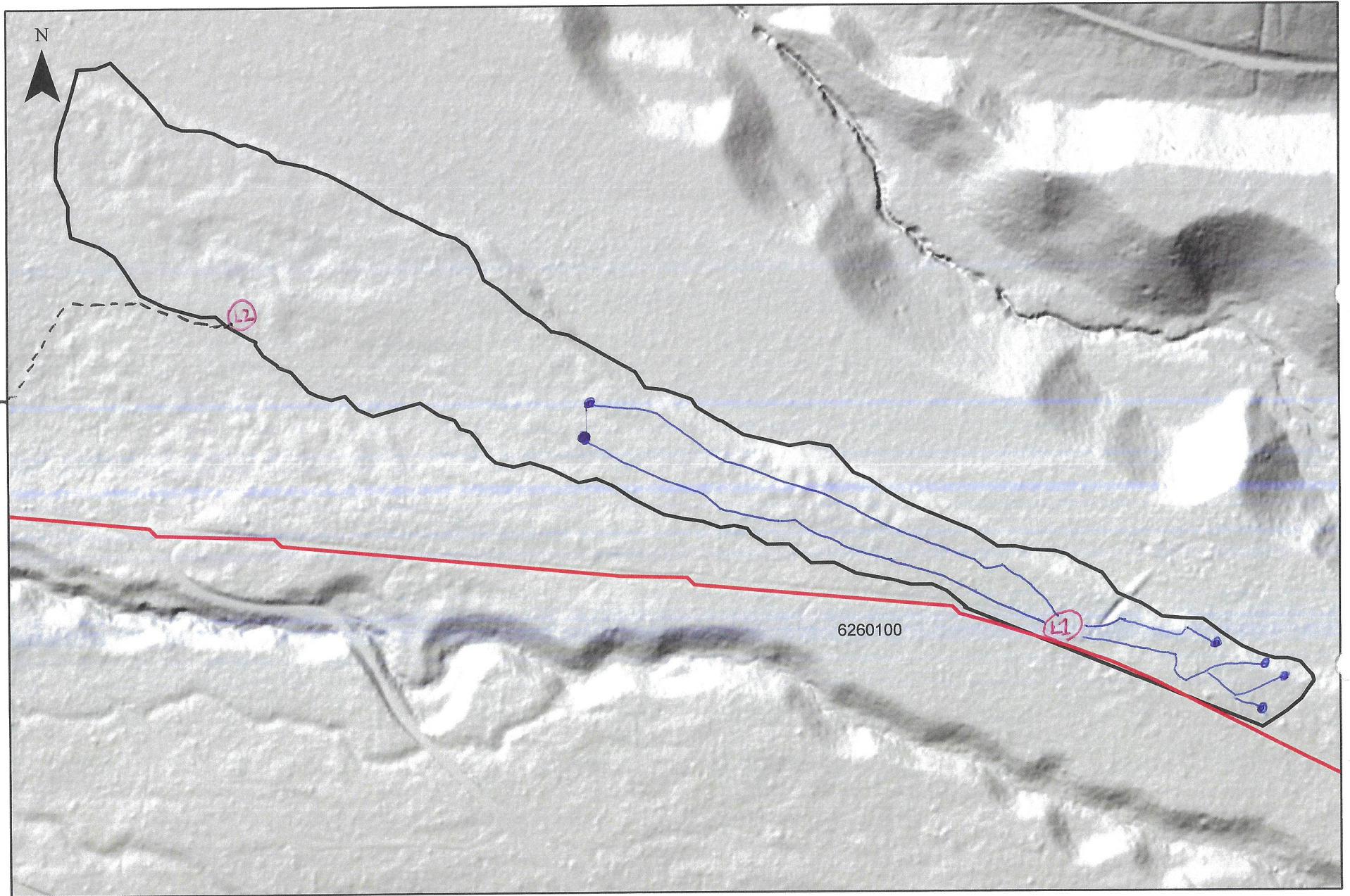
6260142 is an open/close road
K-F.3.1#

(L) = Landing
—• = Skid trail

Tower Unit 57 Map (27 acres)
Whiskey Creek Area
Created by Nicholas R Mero
03-03-20

* Map not to
Scale

Tower Subdivision 61 Map



0 205 410 820 Feet

(L) = Landing
—•— = Skid Trail

--- = Temp Road

* Map not to
Scale

Tower Unit 61 Map
Deer Creek Area
Created by Nicholas R Mero
06-05-2020

Tower Subdivisions 1 & 2 Landing Map

N

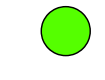
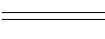
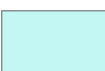



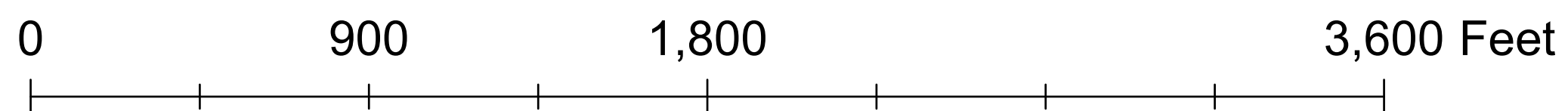
6260100

1

2

Legend

-  Landing Still Being Used For Logging
-  Landing Complete
-  System Roads
-  Grapple Pile Areas
-  Temporary Road



Tower Subdivisions 1 (283 Acres) & 2 (89 acres) Center LiDAR Map
Created by Nicholas R Mero
07/18/22

Tower Stew Subdivision 45 Layout

