




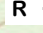
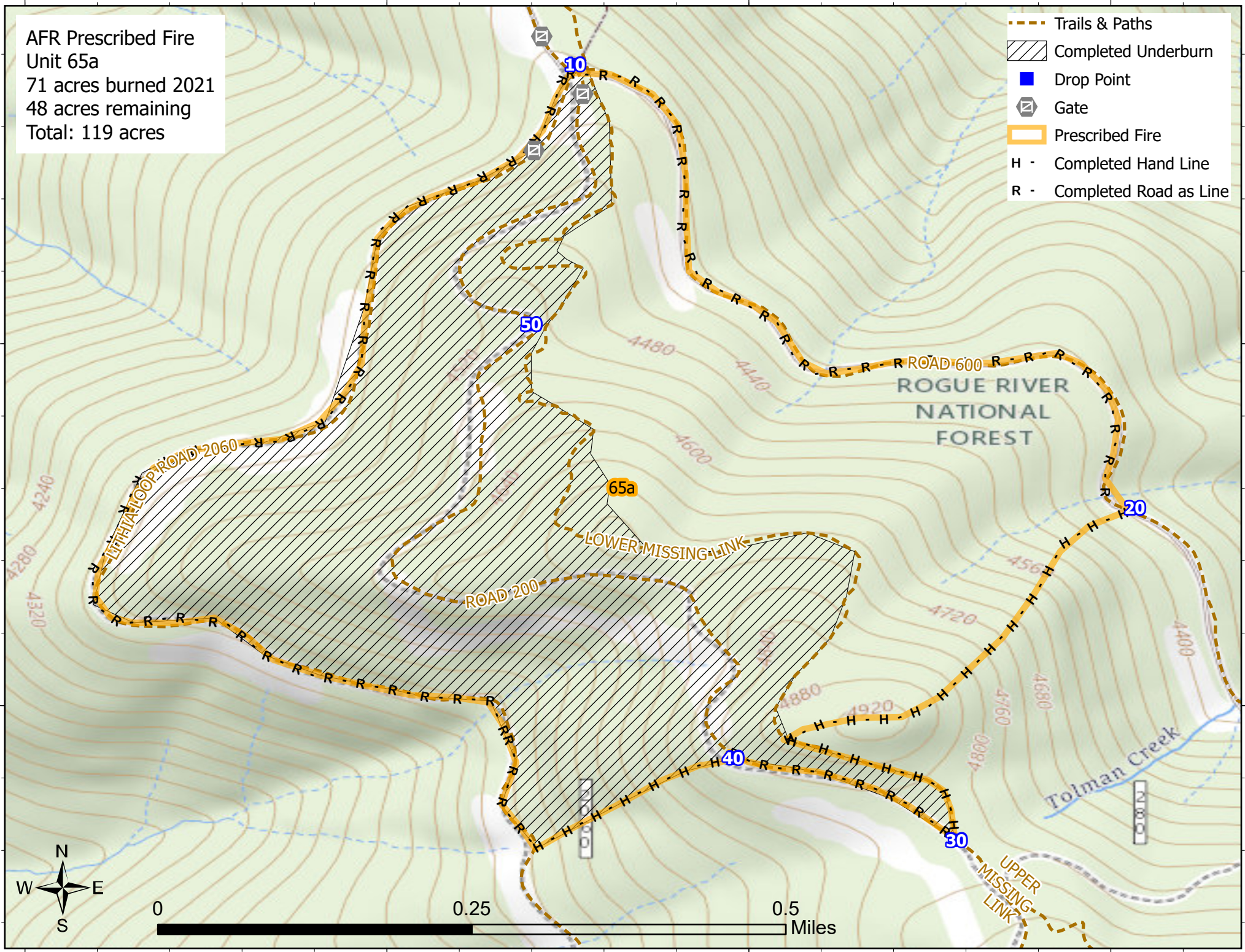


122°41.5'W

122°41'W

AFR Prescribed Fire
 Unit 65a
 71 acres burned 2021
 48 acres remaining
 Total: 119 acres

-  Trails & Paths
-  Completed Underburn
-  Drop Point
-  Gate
-  Prescribed Fire
-  H - Completed Hand Line
-  R - Completed Road as Line



42°8'N

42°8'N

122°41.5'W

122°41'W

