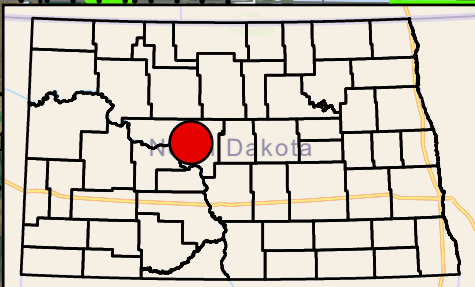
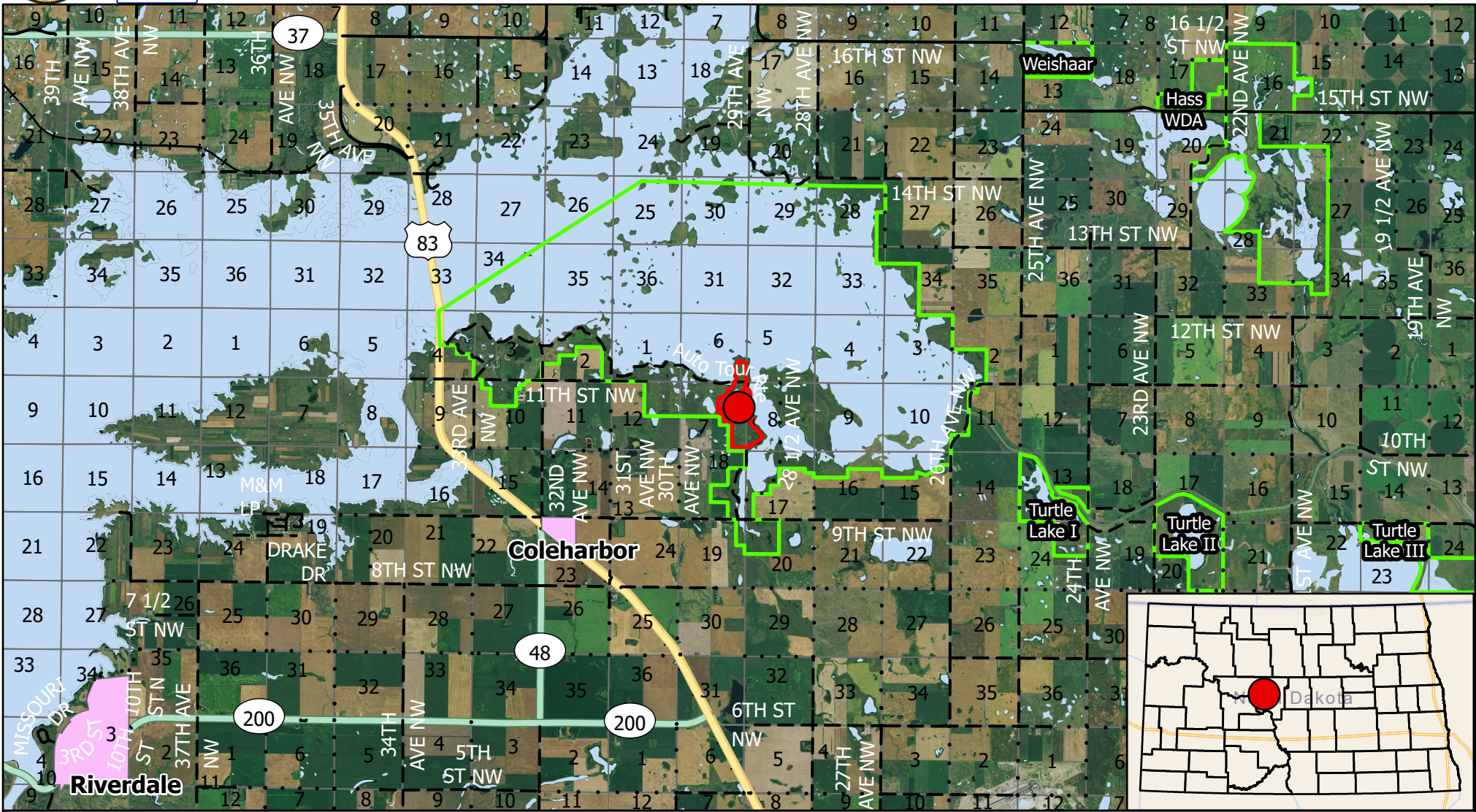




# US FISH & WILDLIFE SERVICE

## Audubon NWR - P1 - Vicinity



- Burn\_Unit
- Burn Unit Boundary
- FWS Lands
- ND Towns
- Water
- Railroads
- Section Line
- Paved
- Gravel
- ⋯ Trail
- Highways**
- Interstate
- State Hwy
- US Hwy



McLean County: Audubon P1 is located 1.0 miles north, and 2.5 miles east of Coleharbor, ND, along the Auto Tour Route. Legal: T147N R82W S5, 6, 7, 8

Scale: 1:130,000

Burn unit Lat/Long: 47.5691° -101.1663°

Produced by: M. Hill  
February 2021  
Nad83 StatePlane North  
Dakota N FIPS 3302 (US Feet)