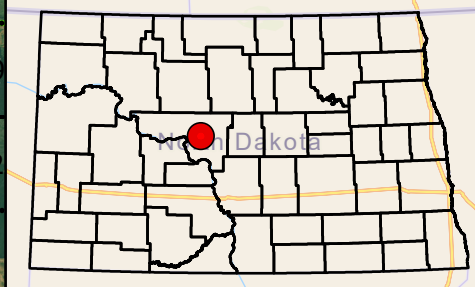
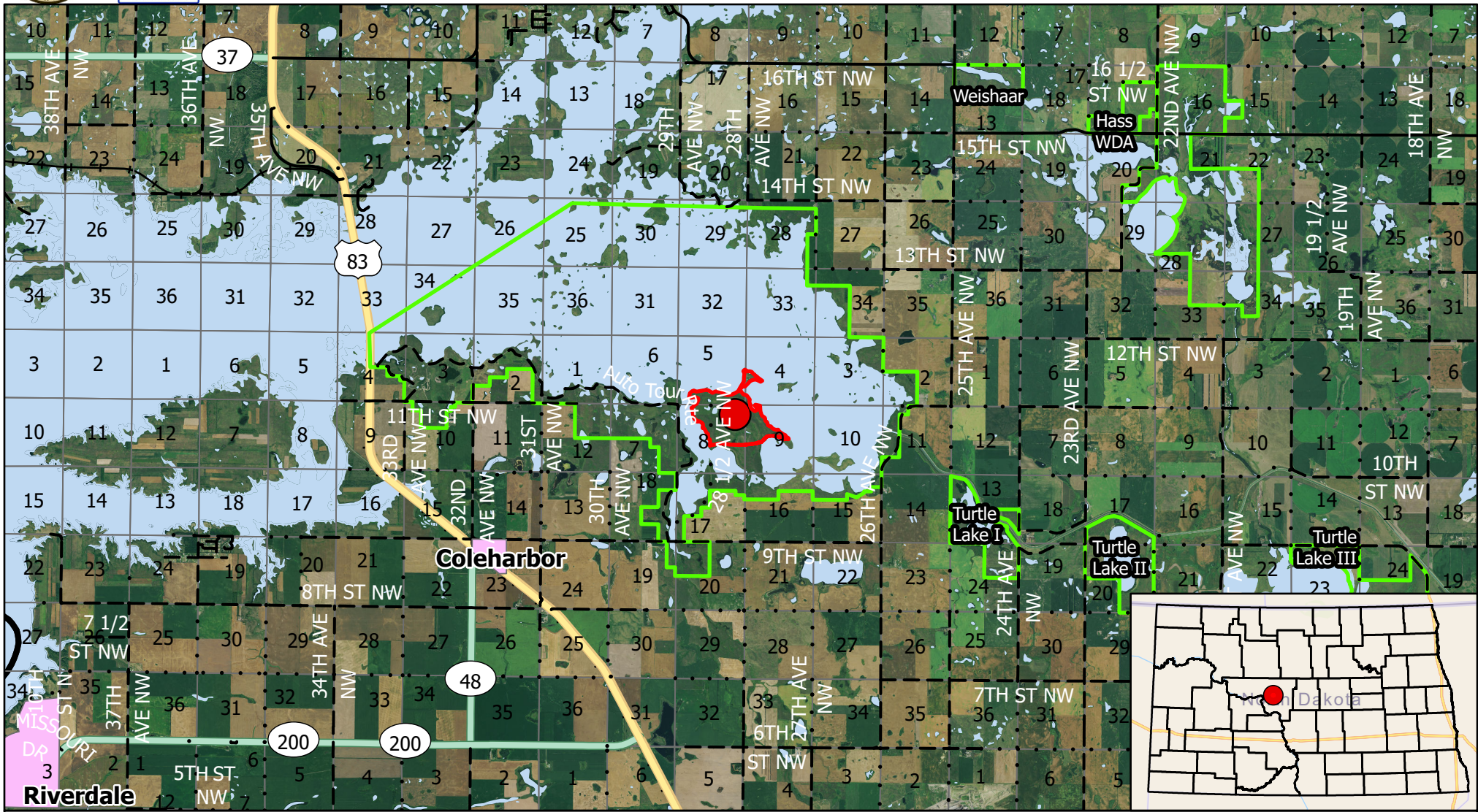




# US FISH & WILDLIFE SERVICE

## Audubon NWR - P2 - Vicinity



- Burn Unit
- Burn Unit Boundary
- FWS Lands
- ND Towns
- Water
- Railroads
- Section Line
- County Roads**
- Paved
- Gravel
- Highways**
- Interstate
- State Hwy
- US Hwy
- Trail



McLean County: Audubon P2 is located 2.0 miles north, and 3.0 miles east of Coleharbor, ND, along 28 1/2 Ave NW. Legal: T147N R82W S54, 5, 8, 9

Scale: 1:130,000

Burn unit Lat/Long: 47.5724° -101.1459°

Produced by: M. Hill  
 February 2021  
 Nad83 StatePlane North  
 Dakota N FIPS 3302 (US Feet)