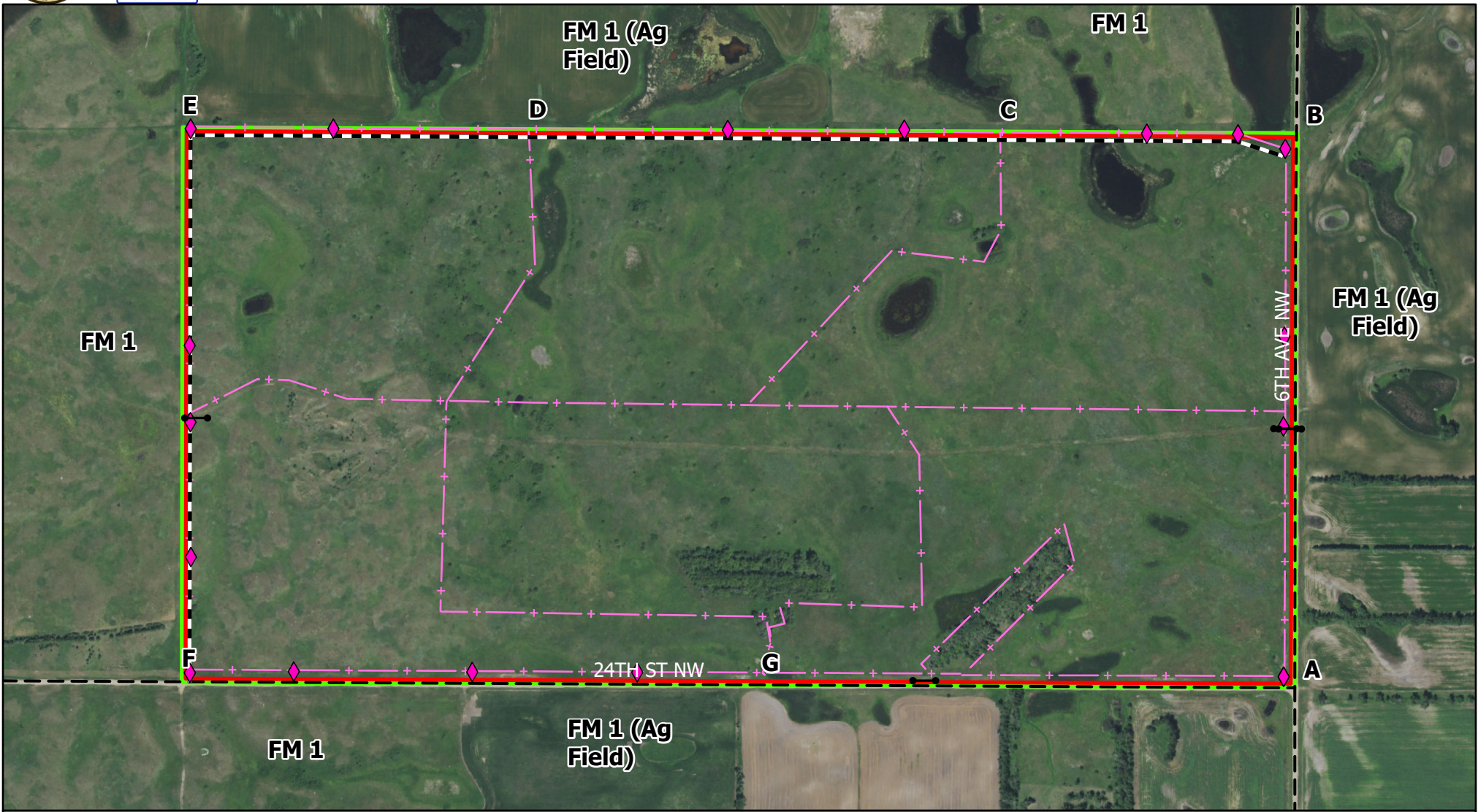




US FISH & WILDLIFE SERVICE

Audubon WMD - Butte WPA - Project Map 320 Acres



- | | | |
|--------------------|-----------------|--------|
| Burn Unit Boundary | Fence | Paved |
| Mow Line | Signs/Postings | Gravel |
| FWS Fee Title | Gate and Access | Trail |

County Roads

Scale: 1:8,000

Produced by: M. Hill
February 2021
NAD83 StatePlane North
Dakota N FIPS 3302 (US Feet)