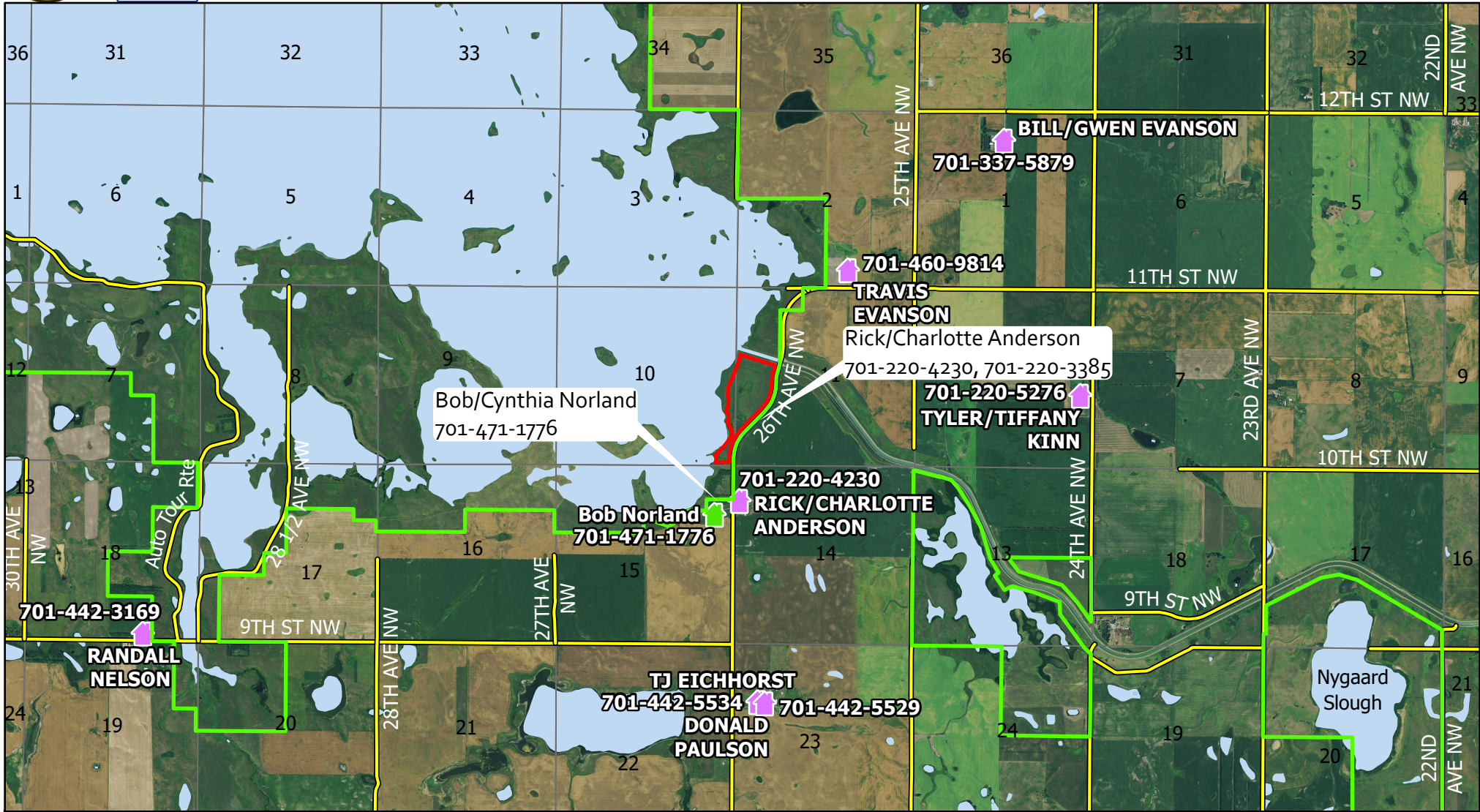




# US FISH & WILDLIFE SERVICE

## Audubon NWR - South Canal - Contingency



**Adjacent Landowners**

- Contingency\_Line
- Burn Unit Boundary
- FWS Lands
- Water

**Residence**

- Occupied
- Unoccupied

**County Roads**

- Paved
- Gravel
- Trail

**Highways**

- Interstate
- State Hwy
- US Hwy

**Contingency Actions**

Primary: Direct Attack

Secondary: Indirect attack using contingency line, roads, and/or wetlands.

Scale: 1:50,000

Produced by: M. Hill  
February 2021  
NAD83 StatePlane North  
Dakota N FIPS 3302 (US Feet)