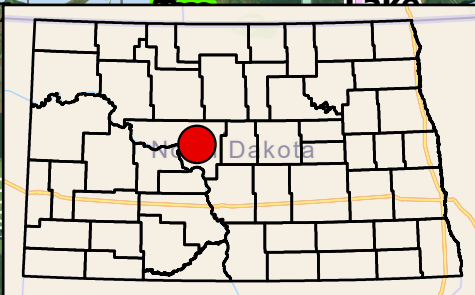
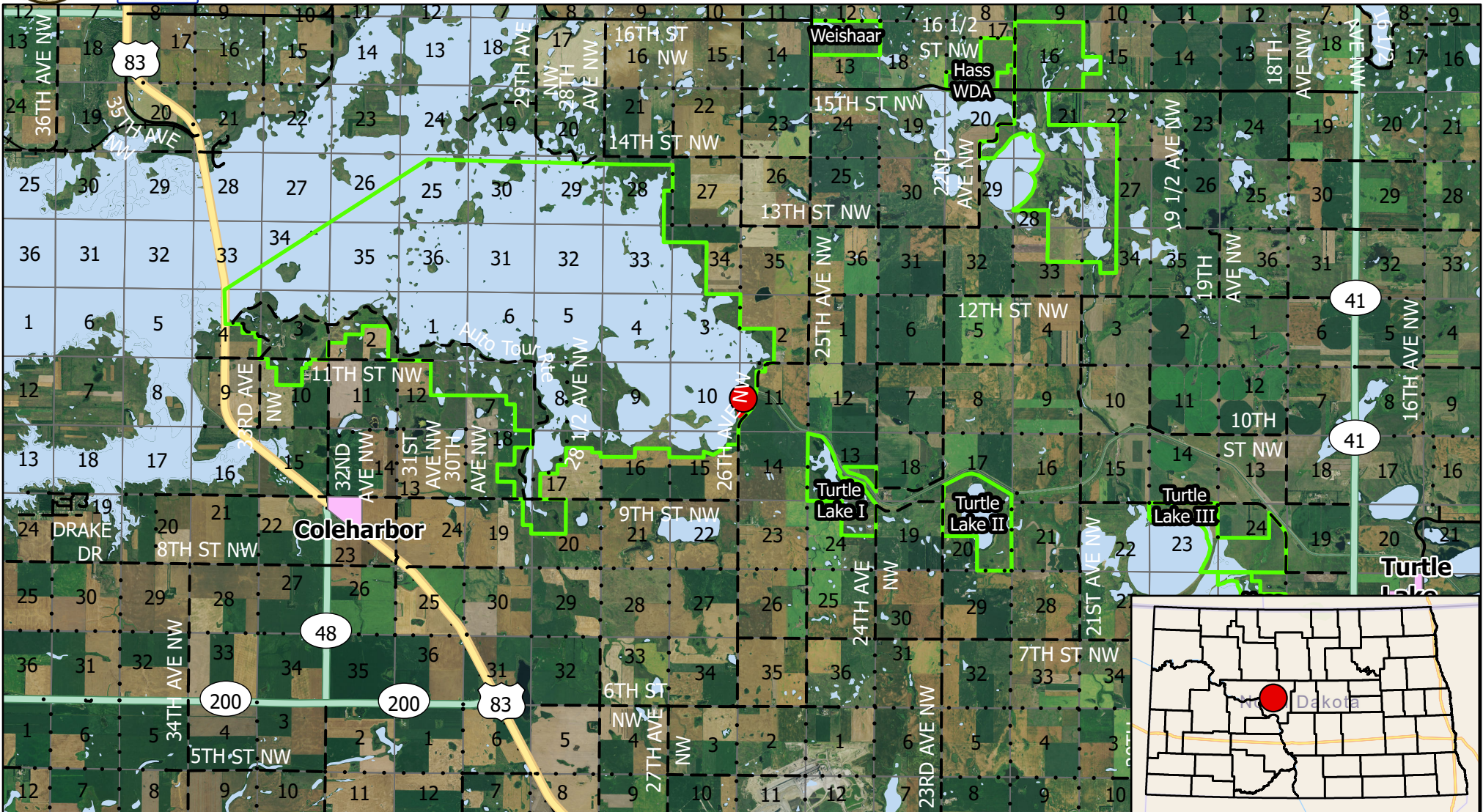




# US FISH & WILDLIFE SERVICE

## Audubon NWR - South Canal - Vicinity



	Burn Unit Centroid	Railroads	Trail	0                      2.5                      5                      10 Miles
	FWS Lands	Section Line	<b>Highways</b>	
ND Towns	<b>County Roads</b>	Interstate	State Hwy	<b>McLean County: South Canal is located 6.0 miles east, and 1.0 mile north of Coleharbor, ND, along 26th Ave NW. Legal: T147N R82W S10, 11</b> <b>Burn unit Lat/Long: 47.5670° -101.0984°</b>
Water	Paved Gravel	US Hwy	<b>Scale: 1:130,000</b> Produced by: M. Hill February 2021 Nad83 StatePlane North Dakota N FIPS 3302 (US Feet)	