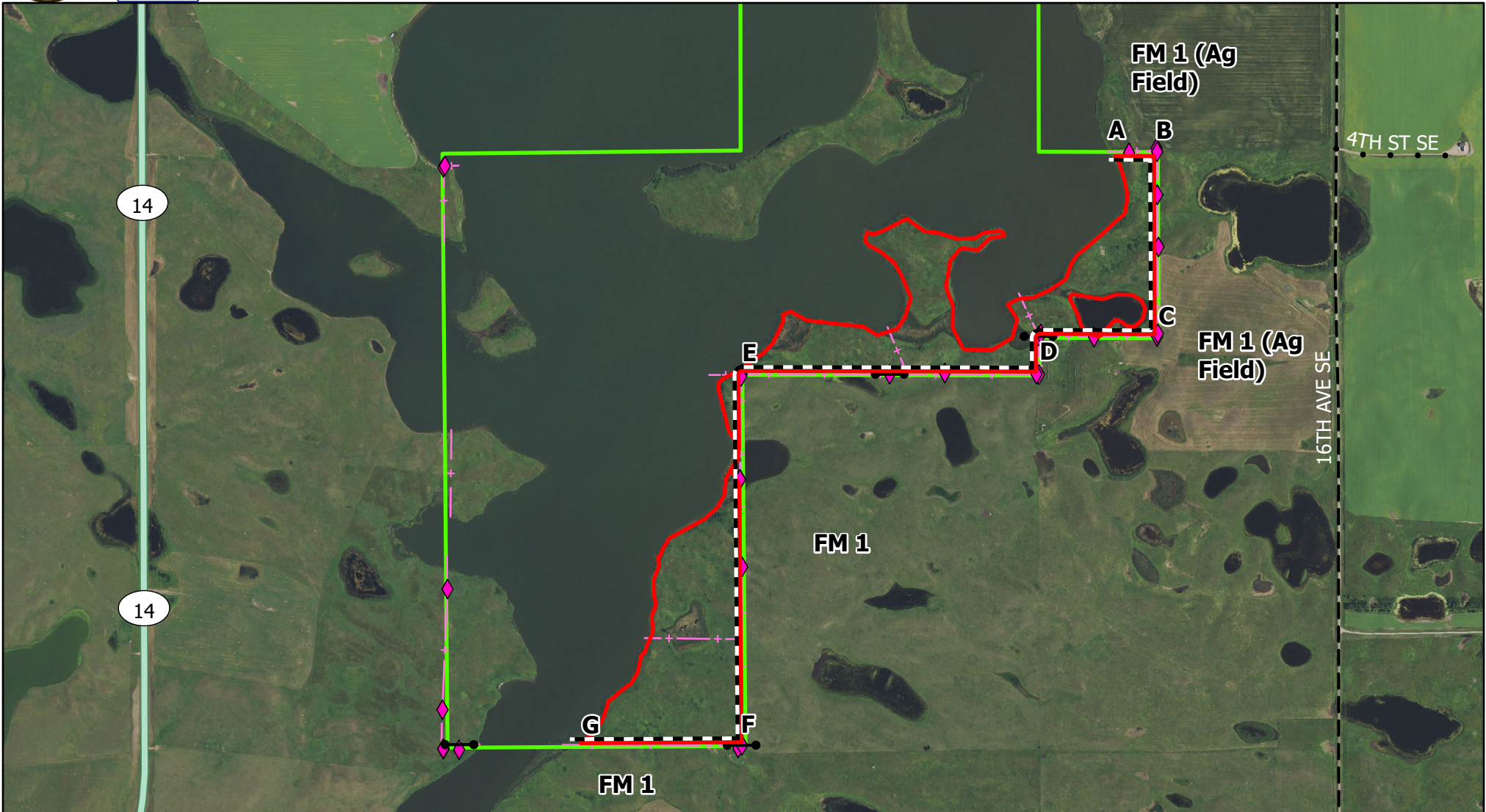




# US FISH & WILDLIFE SERVICE

## Audubon WMD - Davis WPA - Ignition Sequence



N

— Burn Unit Boundary

◆ Signs/Postings

• • Trail

0 0.25 0.5 1 Miles

— FWS Fee Title

● Gate and Access

Highways

Scale: 1:15,000

- - - Mow Line

County Roads

— Interstate

Ignition Sequence with SE Wind:

Group 1: A-->B-->C-->D-->E-->F--G

Produced by: M. Hill  
February 2021  
NAD83 StatePlane North  
Dakota N FIPS 3302 (US Feet)

— Fence

— Paved

— State Hwy

- - - Gravel

— US Hwy