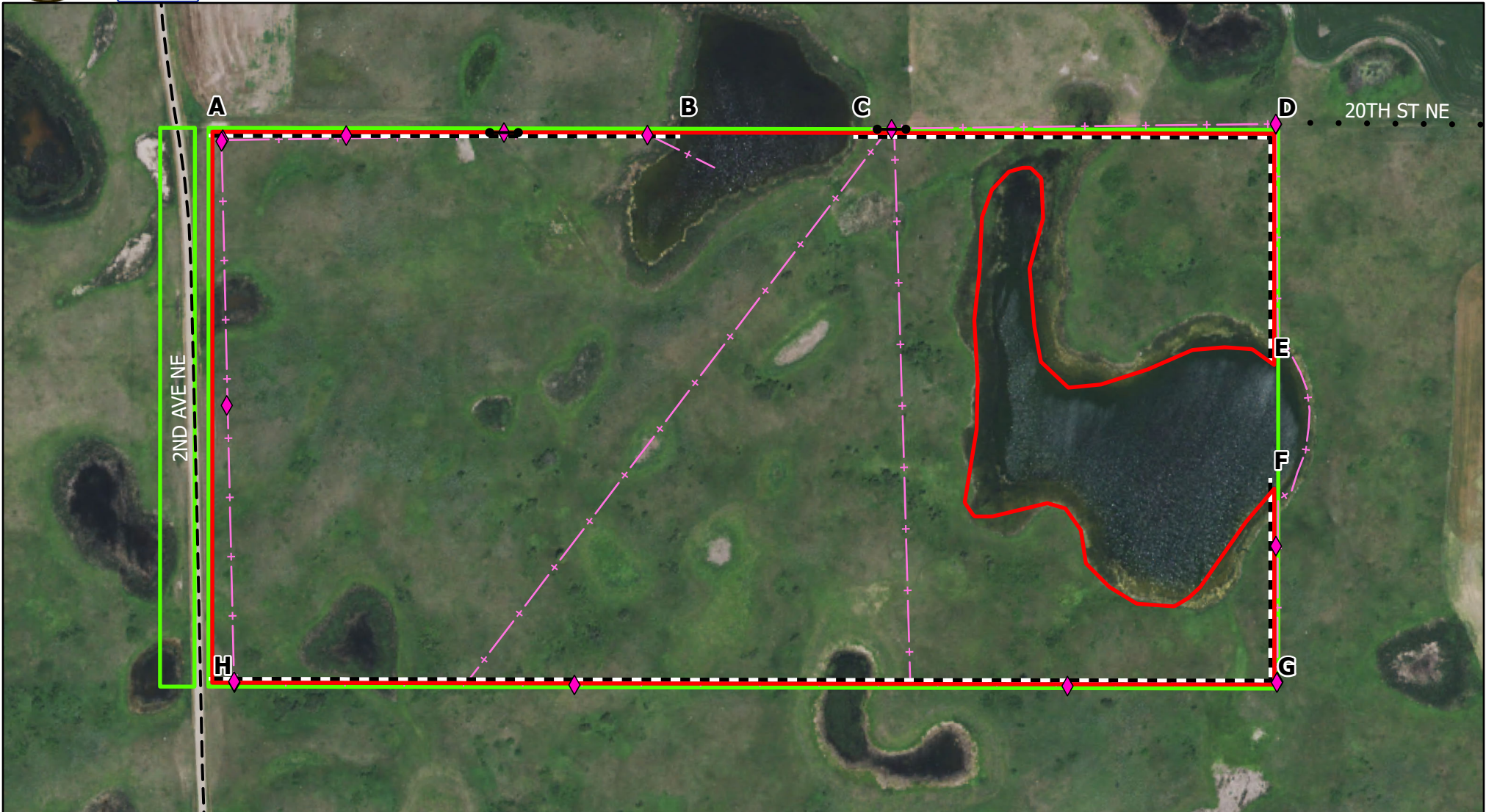


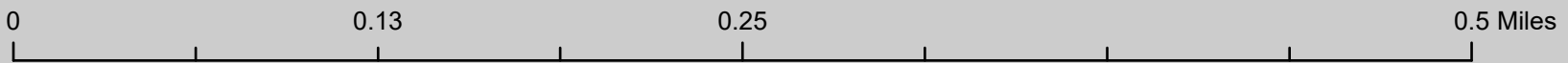


# US FISH & WILDLIFE SERVICE

## Audubon WMD - Johnson WPA - Ignition Sequence



N



- |                    |                 |        |
|--------------------|-----------------|--------|
| Burn_Unit_Boundary | Fence           | Paved  |
| FWS Fee Title      | Signs/Postings  | Gravel |
| Mow_Line           | Gate and Access | Trail  |

### County Roads

### Ignition Sequence with NW Wind:

Group 1: F-->G-->H-->A

Group 2: E-->D-->C-->B-->A

Scale: 1:4,000

Produced by: M. Hill  
 February 2021  
 NAD83 StatePlane North  
 Dakota N FIPS 3302 (US Feet)