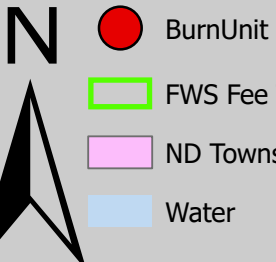
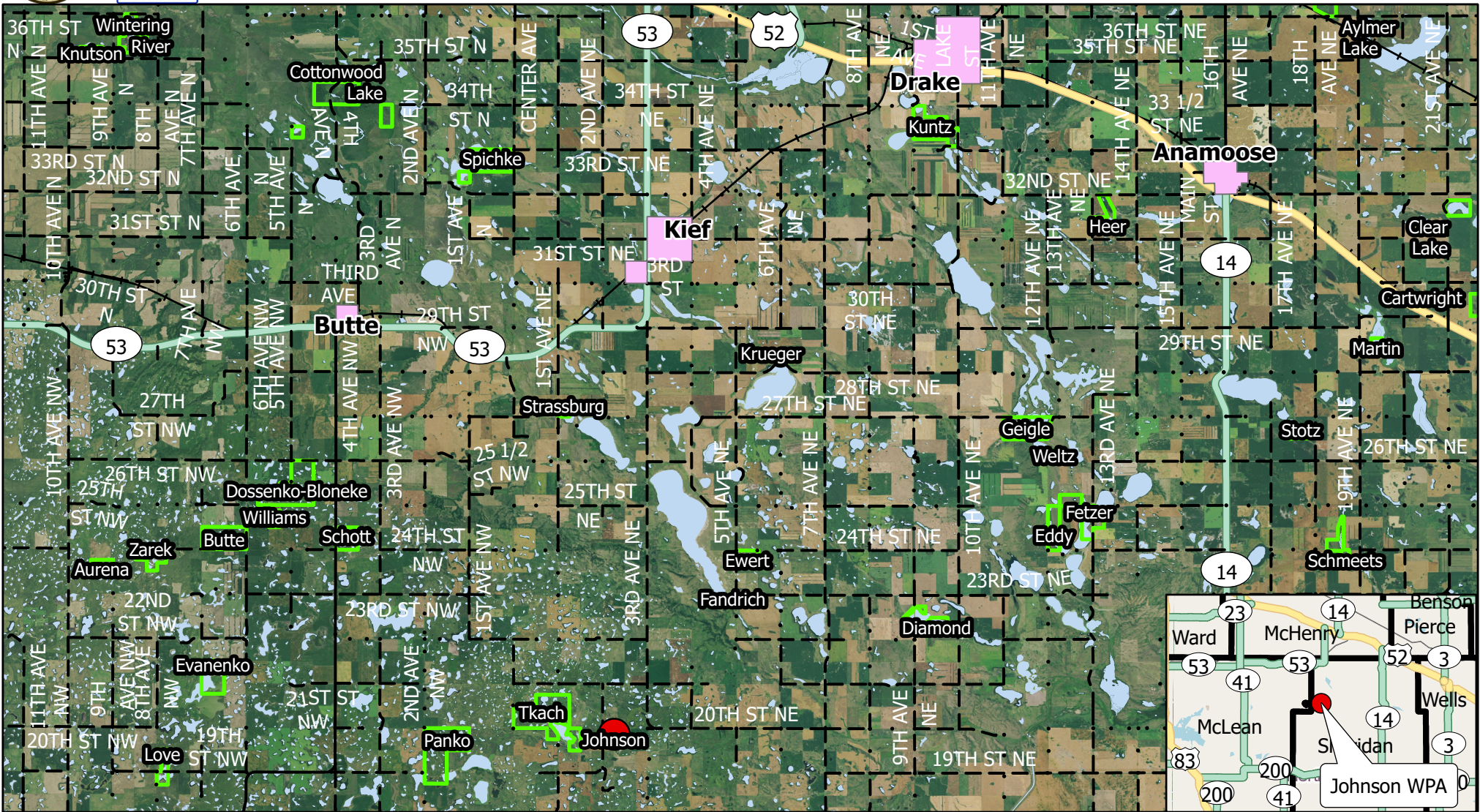




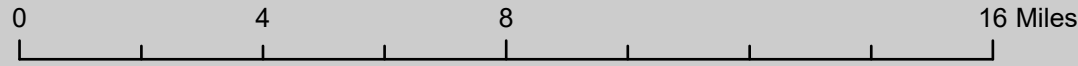
# US FISH & WILDLIFE SERVICE

## Audubon WMD - Johnson WPA - Vicinity



- BurnUnit
- FWS Fee Title
- ND Towns
- Water
- Railroads
- Paved
- Gravel
- Trail

- ### Highways
- Interstate
  - State Hwy
  - US Hwy



Sheridan County: Johnson WPA is located 10.0 miles south, and 1.0 mile west of Kief, ND, along 2nd Ave NE

Scale: 1:200,000

Burn unit Lat/Long: 47.7011° -100.5368°

Produced by: M. Hill  
 February 2021  
 Nad83 StatePlane North  
 Dakota N FIPS 3302 (US Feet)