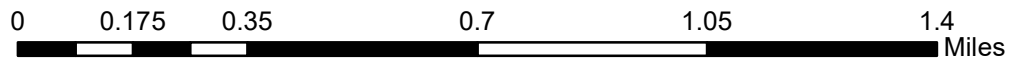
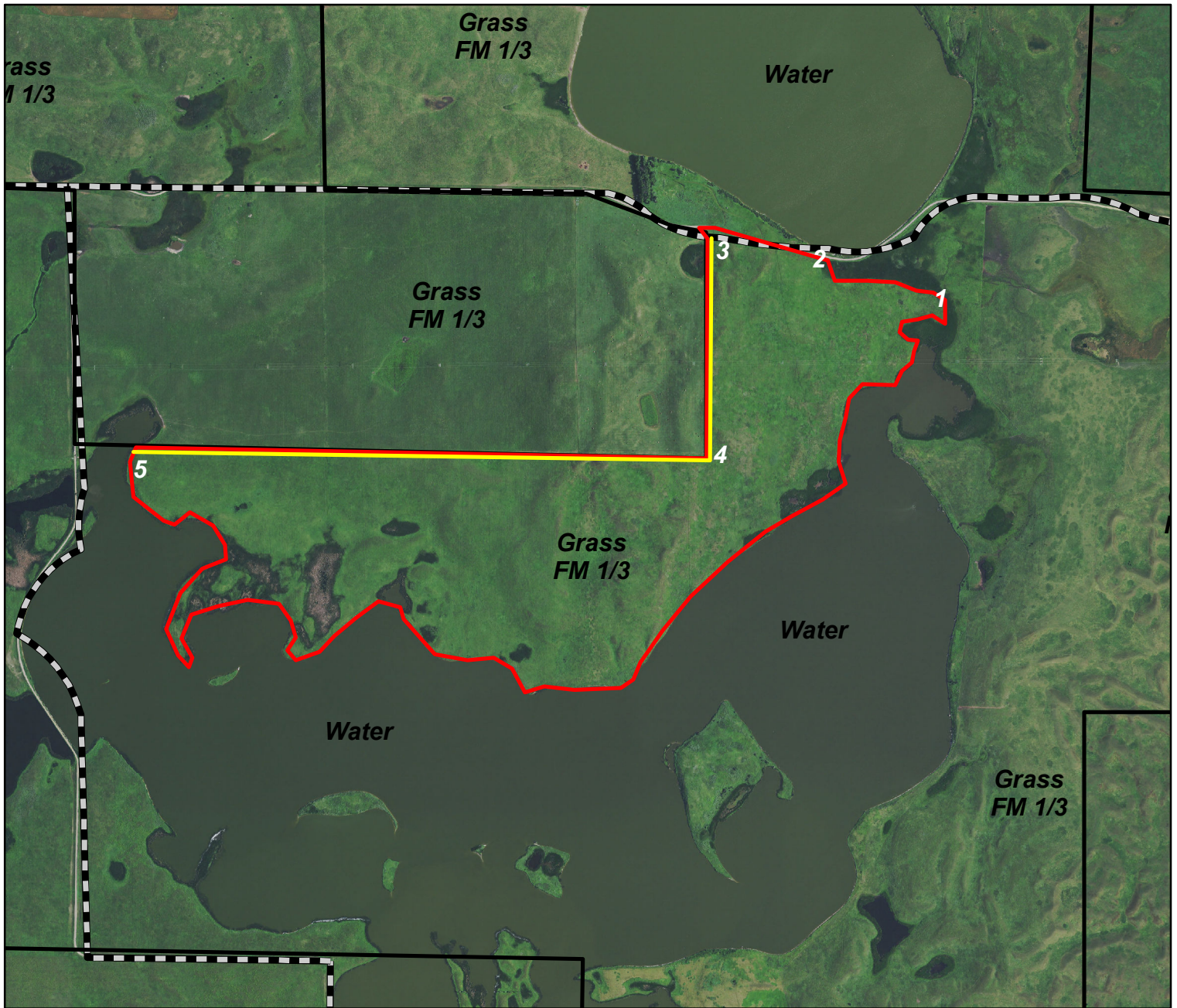
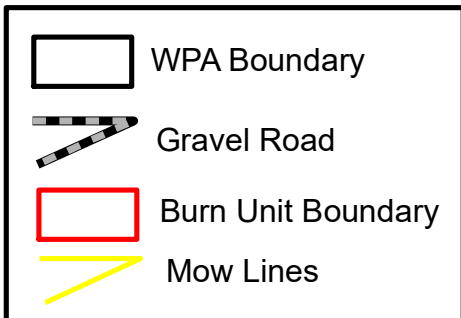


# Chase Lake WPA Unit 3 Ignition Map



## Legend



*The burn units are located 5 miles east, 3 miles south and 1 mile back west of Pettibone.*

*Prepared by; Terry Gwilliams 01/27/2020  
141N 69W Sec. 5*

*Ignition sequence with a northwest wind direction;  
1-5 Along lake shore, 1-2  
4-3, 2-3, 4-5*