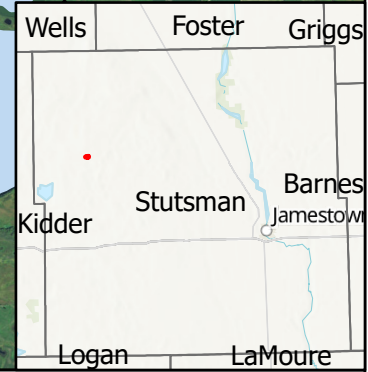
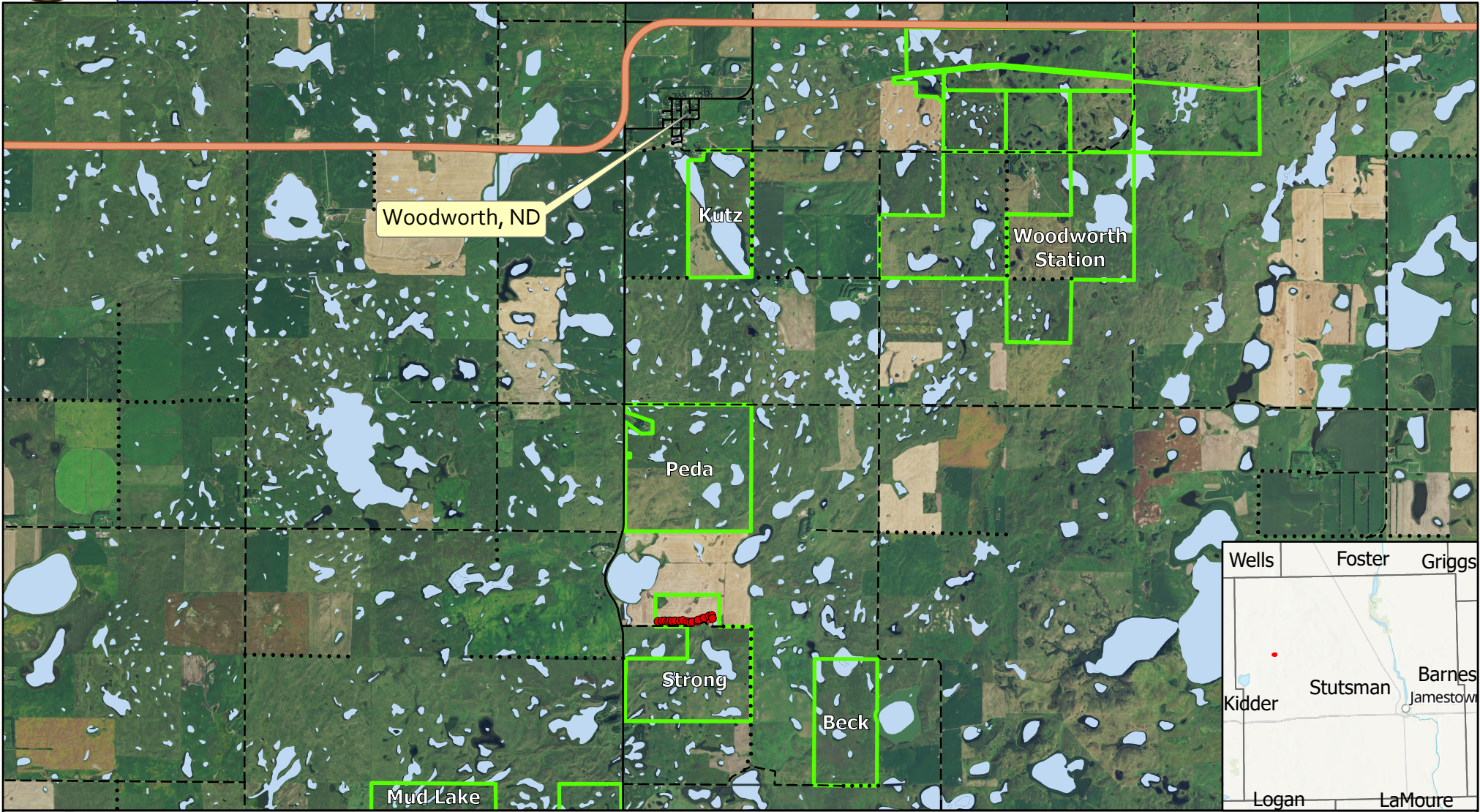




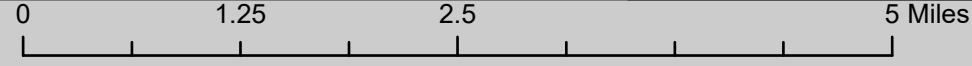
# US FISH & WILDLIFE SERVICE

## Chase Lake WMD - Strong WPA Piles - Vicinity Map



- FWS Fee Title Lands
- Strong Piles - Burn Unit Boundary
- Water
- ND Towns

- Roads**
- Paved
  - Gravel
  - Trail
  - State Hwy 36E



Strong WPA Piles are located 4 miles south of Woodward, ND along 23rd St SE in Stutsman County

Burn unit Lat/Long: 47.0856° -99.3021°

Scale: 1:70,000

Produced by: M. Hill  
 January 2021  
 Nad83 StatePlane North  
 Dakota S FIPS 3302 (US Feet)