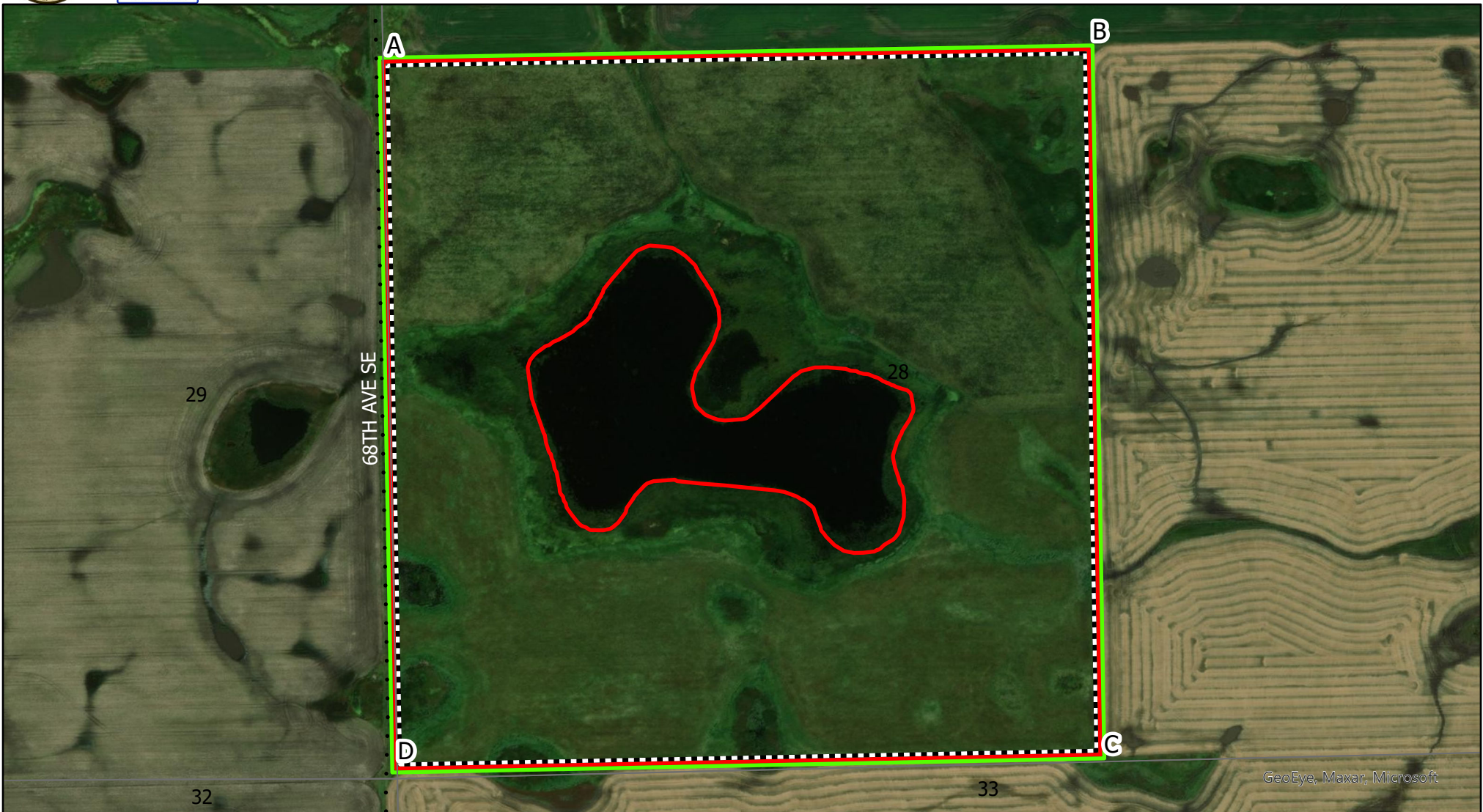


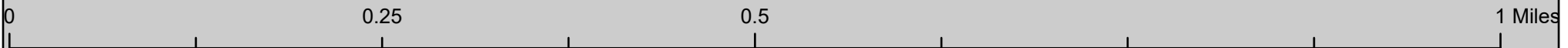


US FISH & WILDLIFE SERVICE

Kulm WMD - Borth WPA - Project Map 144 Acres



GeoEye, Maxar, Microsoft



- Burn Unit Boundary
- FWS Fee Title
- Mow Line
- Section Line
- County Roads**
- Paved
- Gravel
- Trail

Produced by: M. Hill
 March 2021
 NAD83 StatePlane North
 Dakota S FIPS 3302 (US Feet)