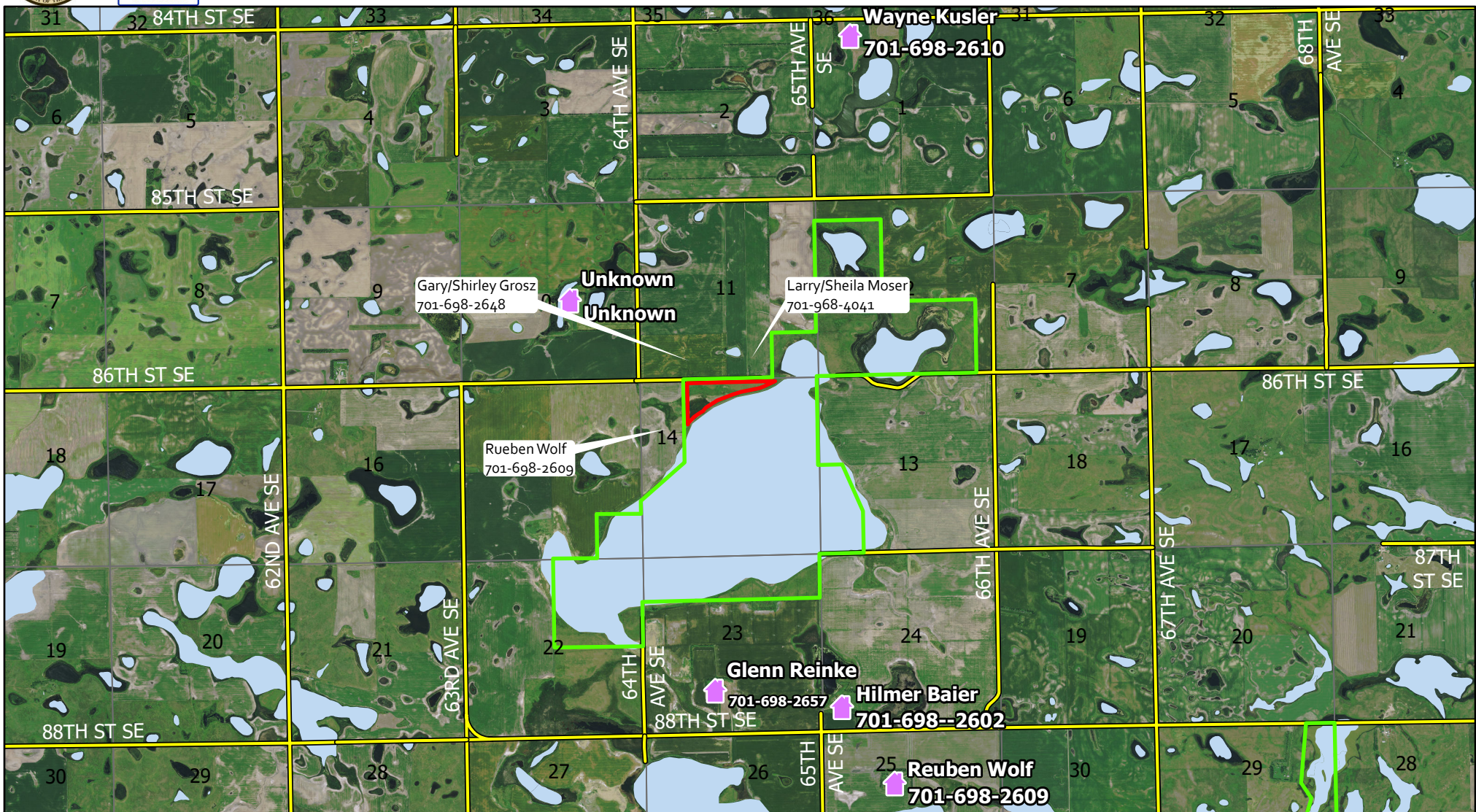




# US FISH & WILDLIFE SERVICE

## Kulm WMD - Wolf WPA Unit 2 - Contingency



N



— Contingency\_Line

— Burn Unit Boundary

— FWS Fee Title

— Water

Residence

— Occupied

— Unoccupied

— Section Line

County Roads

— Paved

- - - Gravel

• • • Trail

0 0.75 1.5 3 Miles

Contingency Actions

Primary: Direct Attack

Secondary: Indirect attack using contingency line, roads, and/or wetlands.

Scale: 1:50,000

Produced by: M. Hill  
January 2021  
NAD83 StatePlane North  
Dakota S FIPS 3302 (US Feet)