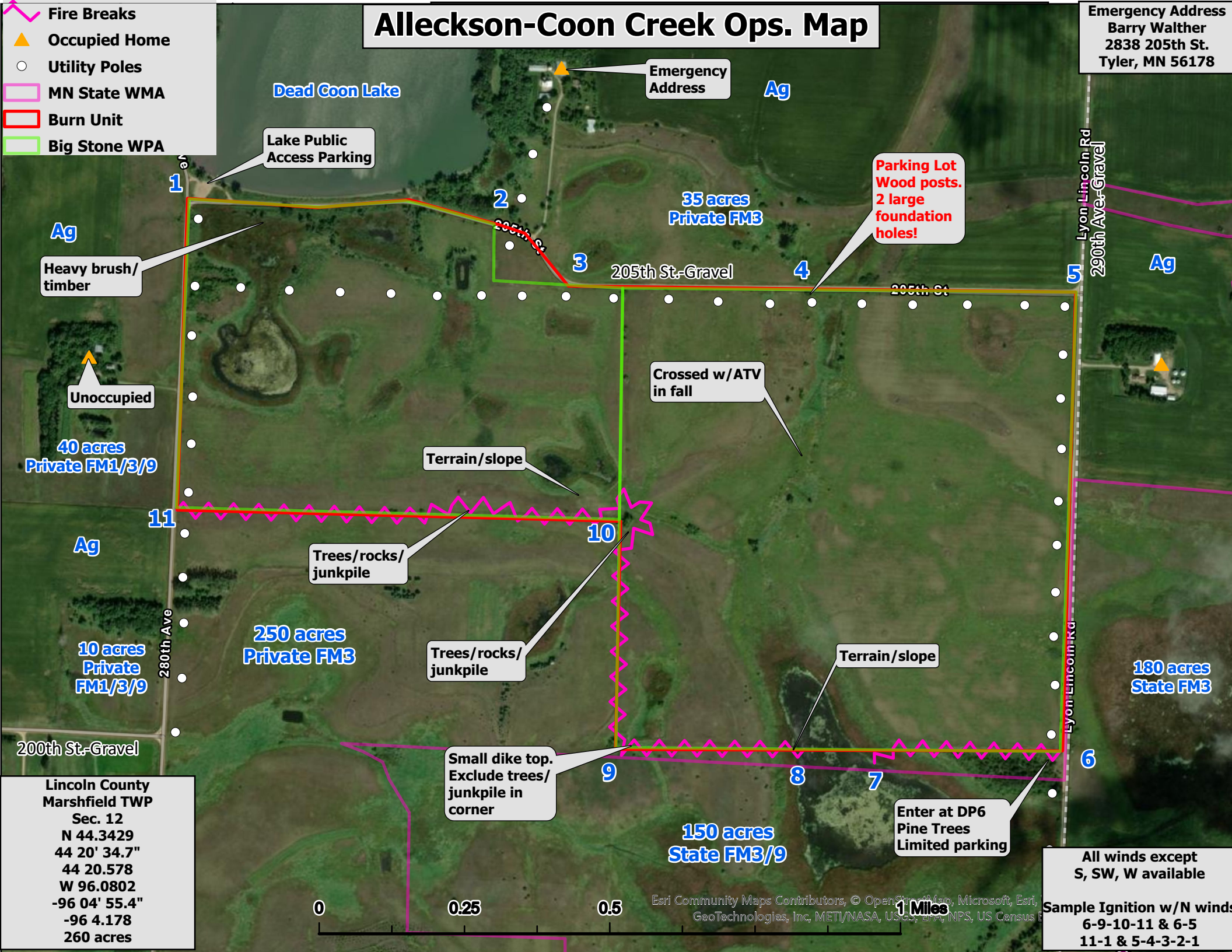


# Alleckson-Coon Creek Ops. Map

Emergency Address  
Barry Walther  
2838 205th St.  
Tyler, MN 56178

-  Fire Breaks
-  Occupied Home
-  Utility Poles
-  MN State WMA
-  Burn Unit
-  Big Stone WPA



Dead Coon Lake  
Lake Public Access Parking

Emergency Address

Parking Lot  
Wood posts.  
2 large  
foundation  
holes!

Heavy brush/  
timber

Unoccupied

Crossed w/ATV  
in fall

Terrain/slope

Trees/rocks/  
junkpile

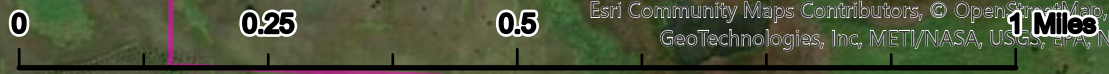
Trees/rocks/  
junkpile

Terrain/slope

Small dike top.  
Exclude trees/  
junkpile in  
corner

Enter at DP6  
Pine Trees  
Limited parking

Lincoln County  
Marshfield TWP  
Sec. 12  
N 44.3429  
44 20' 34.7"  
44 20.578  
W 96.0802  
-96 04' 55.4"  
-96 4.178  
260 acres



Esri Community Maps Contributors, © OpenStreetMap, Microsoft, Esri, GeoTechnologies, Inc, METI/NASA, USGS, EPA, NPS, US Census

All winds except  
S, SW, W available  
Sample Ignition w/N winds  
6-9-10-11 & 6-5  
11-1 & 5-4-3-2-1

Ag

35 acres  
Private FM3

Ag

40 acres  
Private FM1/3/9

Ag

250 acres  
Private FM3

10 acres  
Private  
FM1/3/9

180 acres  
State FM3

150 acres  
State FM3/9

200th St-Gravel

1

2

3

4

5

11

10

6

9

8

7

280th Ave

205th St-Gravel

205th St

Lyon Lincoln Rd  
290th Ave-Gravel