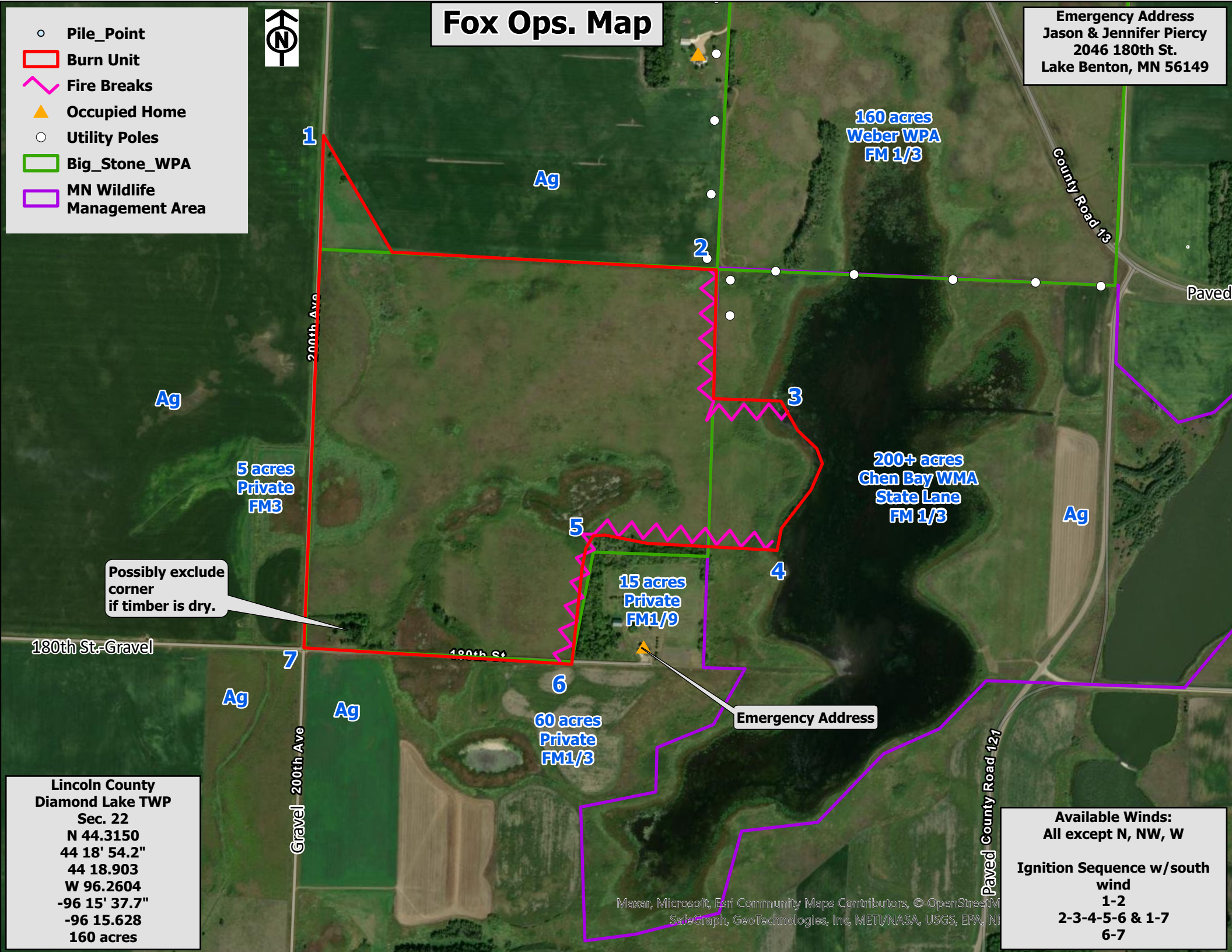


Fox Ops. Map

Emergency Address
 Jason & Jennifer Piercy
 2046 180th St.
 Lake Benton, MN 56149

- Pile_Point
- ▭ Burn Unit
- ⋈ Fire Breaks
- ▲ Occupied Home
- Utility Poles
- ▭ Big_Stone_WPA
- ▭ MN Wildlife Management Area



Possibly exclude corner if timber is dry.

Emergency Address

Lincoln County
 Diamond Lake TWP
 Sec. 22
 N 44.3150
 44 18' 54.2"
 44 18.903
 W 96.2604
 -96 15' 37.7"
 -96 15.628
 160 acres

Available Winds:
 All except N, NW, W

Ignition Sequence w/south wind
 1-2
 2-3-4-5-6 & 1-7
 6-7

Maxar, Microsoft, Esri Community Maps Contributors, © OpenStreetMap, SafeGraph, GeoTechnologies, Inc, METI/NASA, USGS, EPA, NI