
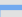
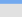
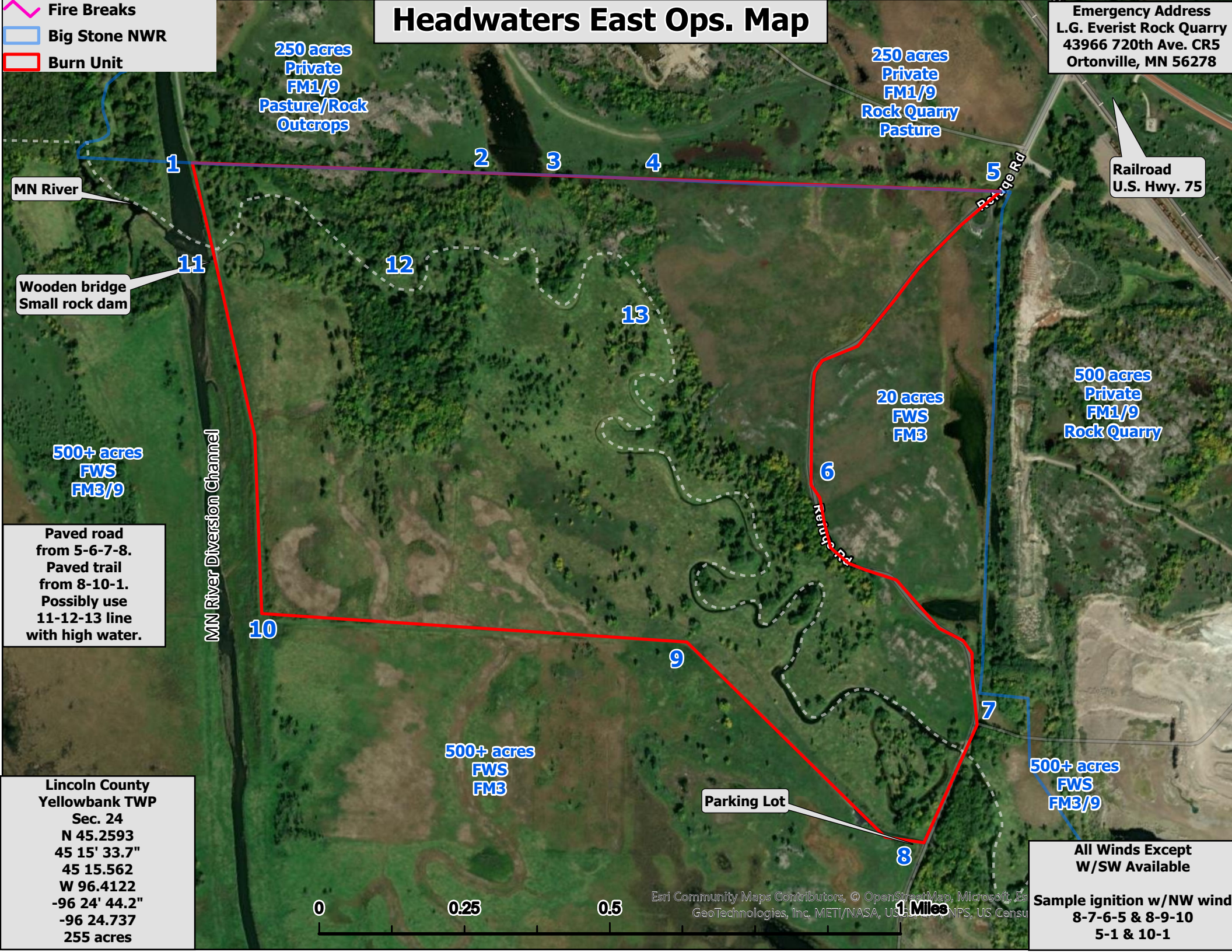


Headwaters East Ops. Map

 Fire Breaks
 Big Stone NWR
 Burn Unit

Emergency Address
L.G. Everist Rock Quarry
43966 720th Ave. CR5
Ortonville, MN 56278



250 acres
Private
FM1/9
Pasture/Rock
Outcrops

250 acres
Private
FM1/9
Rock Quarry
Pasture

500 acres
Private
FM1/9
Rock Quarry

20 acres
FWS
FM3

500+ acres
FWS
FM3

500+ acres
FWS
FM3/9

500+ acres
FWS
FM3/9

Paved road
from 5-6-7-8.
Paved trail
from 8-10-1.
Possibly use
11-12-13 line
with high water.

Lincoln County
Yellowbank TWP
Sec. 24
N 45.2593
45 15' 33.7"
45 15.562
W 96.4122
-96 24' 44.2"
-96 24.737
255 acres

Parking Lot

All Winds Except
W/SW Available
Sample ignition w/NW wind
8-7-6-5 & 8-9-10
5-1 & 10-1



Esri Community Maps Contributors, © OpenStreetMap, Microsoft, Esri
GeoTechnologies, Inc. METI/NASA, USGS, USFS, NPS, US Census