

NW Prairie/Headwaters West Ops. Map

Emergency Address
 Rich Papasso
 4141 121st. Ave.
 Ortonville, MN 56278

Available winds:
 NW, W, SW, S

Sample Ignition
 w/NW winds

9-10-11 & 7-8
 7-6-5-4
 11-12-1 & 4-3-2-1
Powerpoles lit in
 coordination
 w/unit

Legend



- Big Stone NWR
- Burn Unit
- Fire Breaks
- ◆ Occupied Home
- ★ Water Source
- Utility Poles

Gravel Pit
 Some grass within
 pit will be burnt

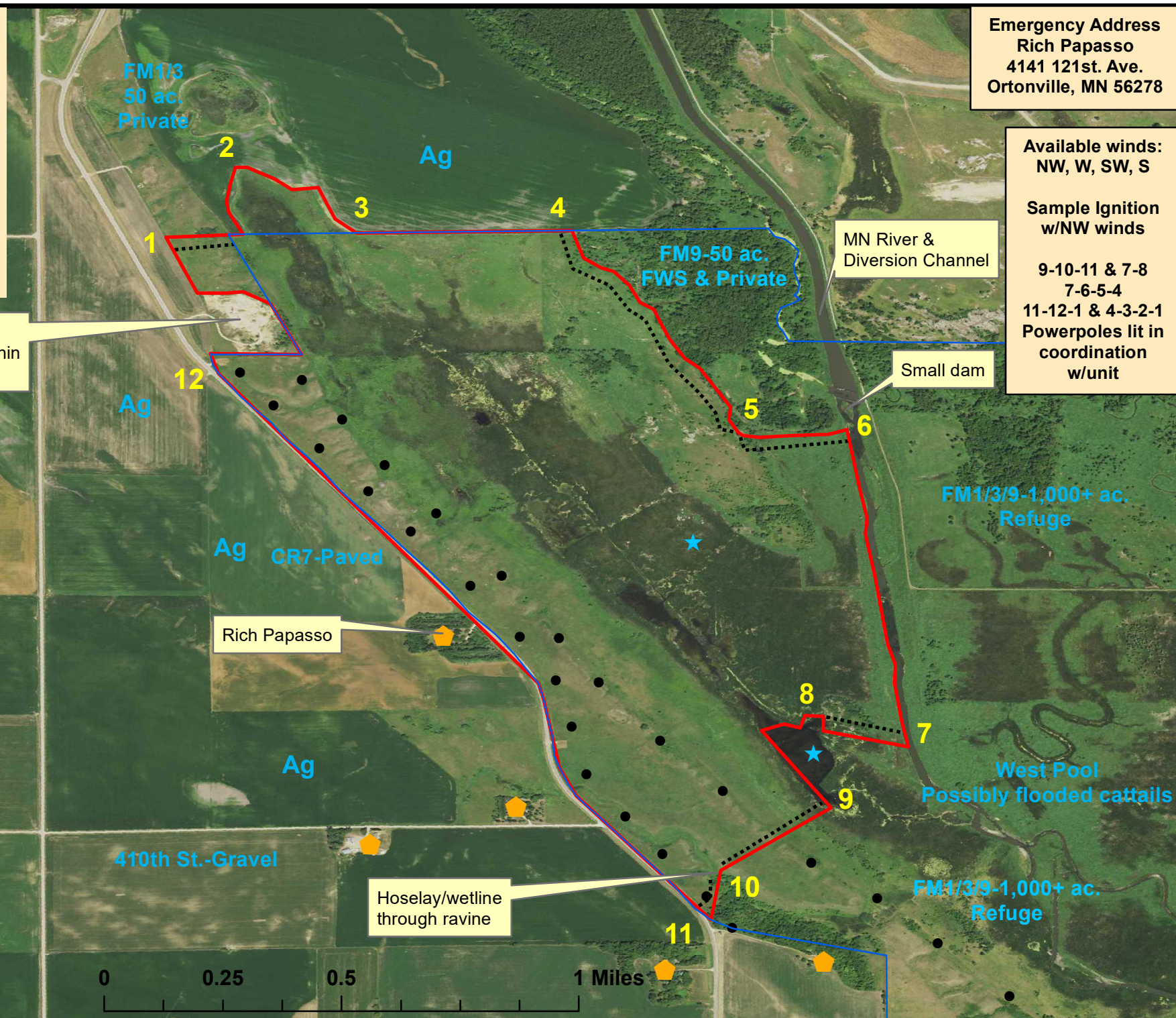
MN River &
 Diversion Channel

Small dam

Rich Papasso

Hoselay/wetline
 through ravine

LQP Co.
 Yellow Bank TWP
 T120-121N R46W
 S27, 28, 34
 N45°16'6.136"
 W96°26'48.17"
 500 acres



FM1/3
 50 ac.
 Private

Ag

FM9-50 ac.
 FWS & Private

Ag

Ag CR7-Paved

FM1/3/9-1,000+ ac.
 Refuge

Ag

West Pool
 Possibly flooded cattails

410th St.-Gravel

FM1/3/9-1,000+ ac.
 Refuge