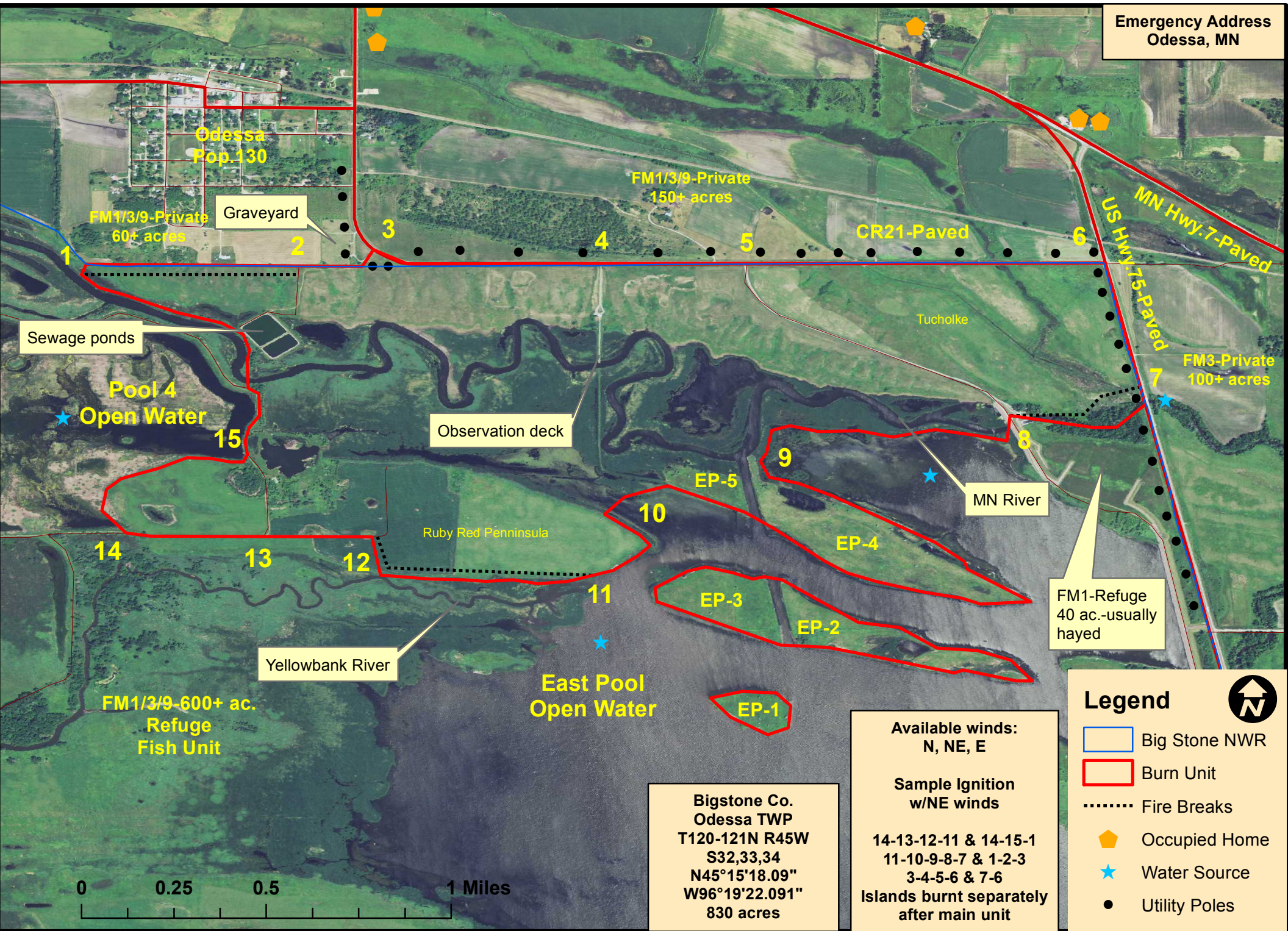


# Odessa-Ruby Red Ops. Map



Emergency Address  
Odessa, MN

Odessa  
Pop. 130

FM1/3/9-Private  
60+ acres

Graveyard

FM1/3/9-Private  
150+ acres

CR21-Paved

US Hwy. 75-Paved  
MN Hwy. 7-Paved

FM3-Private  
100+ acres

Sewage ponds

Pool 4  
Open Water

Observation deck

MN River

Ruby Red Peninsula

Yellowbank River

East Pool  
Open Water

FM1/3/9-600+ ac.  
Refuge  
Fish Unit

FM1-Refuge  
40 ac.-usually  
hayed

## Legend



- Big Stone NWR
- Burn Unit
- ..... Fire Breaks
- ◆ Occupied Home
- ★ Water Source
- Utility Poles

Available winds:  
N, NE, E

Sample Ignition  
w/NE winds

14-13-12-11 & 14-15-1  
11-10-9-8-7 & 1-2-3  
3-4-5-6 & 7-6  
Islands burnt separately  
after main unit

Bigstone Co.  
Odessa TWP  
T120-121N R45W  
S32,33,34  
N45°15'18.09"  
W96°19'22.091"  
830 acres

