

- Fire Breaks
- Big Stone NWR
- Burn Unit

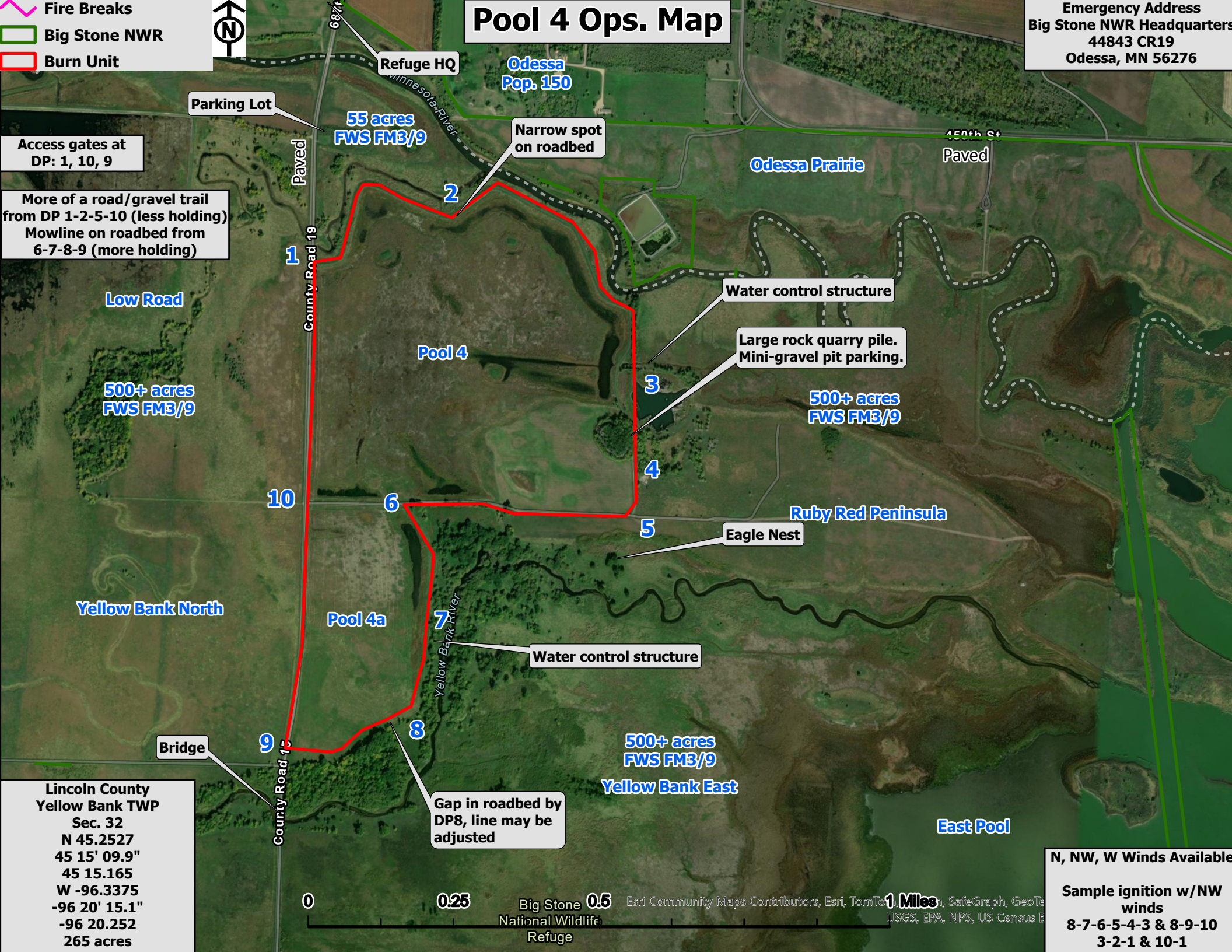


Pool 4 Ops. Map

Emergency Address
 Big Stone NWR Headquarters
 44843 CR19
 Odessa, MN 56276

Access gates at
 DP: 1, 10, 9

More of a road/gravel trail
 from DP 1-2-5-10 (less holding)
 Mowline on roadbed from
 6-7-8-9 (more holding)



Paved
 County Road 19
 Paved
 County Road 15

55 acres
 FWS FM3/9

Low Road

500+ acres
 FWS FM3/9

10

Yellow Bank North

Pool 4a

Yellow Bank River
 7

Water control structure

Bridge

9

Gap in roadbed by
 DP8, line may be
 adjusted

500+ acres
 FWS FM3/9

Yellow Bank East

Ruby Red Peninsula

Eagle Nest

500+ acres
 FWS FM3/9

Large rock quarry pile.
 Mini-gravel pit parking.

Water control structure

Odessa Prairie

450th St
 Paved

Odessa
 Pop. 150

Refuge HQ

68th

1

2

Narrow spot
 on roadbed

3

4

5

6

8

East Pool



Big Stone National Wildlife Refuge
 Esri Community Maps Contributors, Esri, TomTom, SafeGraph, GeoTe
 USGS, EPA, NPS, US Census B

N, NW, W Winds Available

Sample ignition w/NW
 winds
 8-7-6-5-4-3 & 8-9-10
 3-2-1 & 10-1

Lincoln County
 Yellow Bank TWP
 Sec. 32
 N 45.2527
 45 15' 09.9"
 45 15.165
 W -96.3375
 -96 20' 15.1"
 -96 20.252
 265 acres