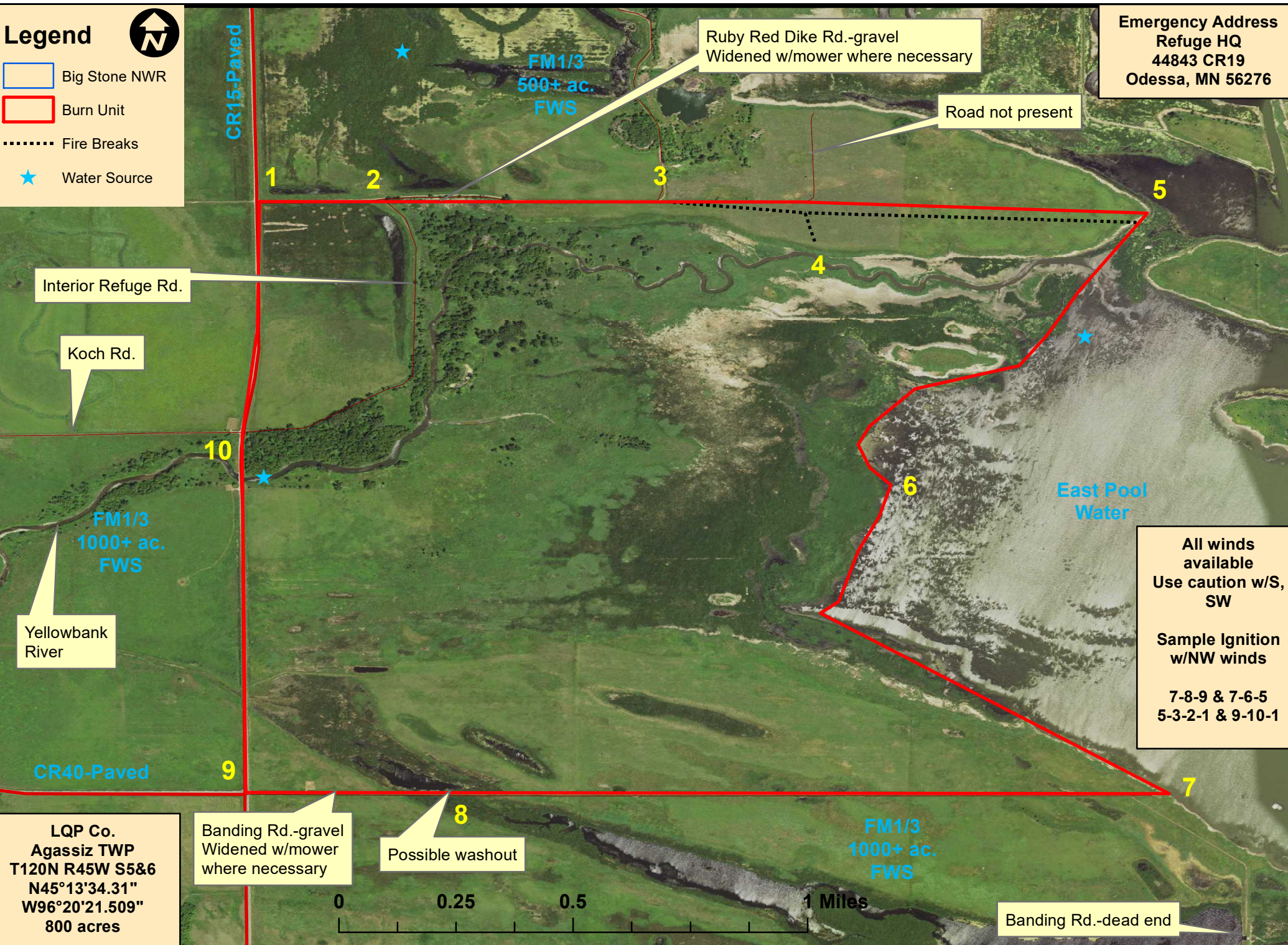


Yellowbank East Ops. Map

Emergency Address
 Refuge HQ
 44843 CR19
 Odessa, MN 56276

Legend

-  Big Stone NWR
-  Burn Unit
-  Fire Breaks
-  Water Source



Ruby Red Dike Rd.-gravel
 Widened w/mower where necessary

Road not present

Interior Refuge Rd.

Koch Rd.

Yellowbank River

East Pool Water

All winds available
 Use caution w/S, SW

Sample Ignition
 w/NW winds

7-8-9 & 7-6-5
 5-3-2-1 & 9-10-1

LQP Co.
 Agassiz TWP
 T120N R45W S5&6
 N45°13'34.31"
 W96°20'21.509"
 800 acres

Banding Rd.-gravel
 Widened w/mower
 where necessary

Possible washout



Banding Rd.-dead end

FM1/3
 500+ ac.
 FWS

FM1/3
 1000+ ac.
 FWS

FM1/3
 1000+ ac.
 FWS

CR15-Paved

CR40-Paved