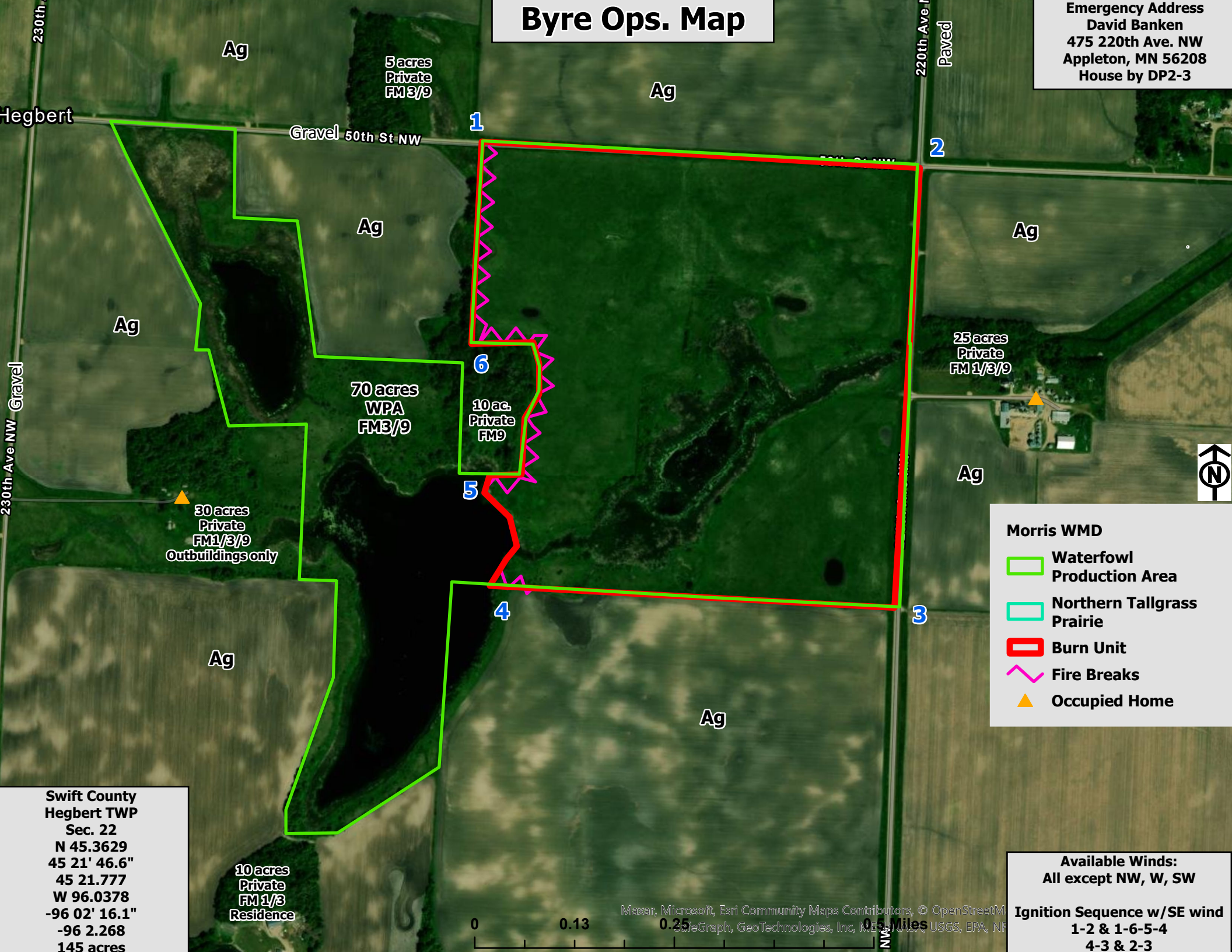


Byre Ops. Map

Emergency Address
 David Banken
 475 220th Ave. NW
 Appleton, MN 56208
 House by DP2-3



Hegbert

Gravel 50th St NW

220th Ave. NW
 Paved

230th Ave. NW
 Gravel

5 acres
 Private
 FM 3/9

25 acres
 Private
 FM 1/3/9

30 acres
 Private
 FM 1/3/9
 Outbuildings only

70 acres
 WPA
 FM 3/9

10 ac.
 Private
 FM 9

10 acres
 Private
 FM 1/3
 Residence

Swift County
 Hegbert TWP
 Sec. 22
 N 45.3629
 45 21' 46.6"
 45 21.777
 W 96.0378
 -96 02' 16.1"
 -96 2.268
 145 acres



Maxar, Microsoft, Esri Community Maps Contributors, © OpenStreetMap contributors, TomTom, © Mapbox, © Mapbox, © GeoTechnologies, Inc, MEMPHIS, USGS, EPA, NPS

- Morris WMD**
- Waterfowl Production Area
 - Northern Tallgrass Prairie
 - Burn Unit
 - Fire Breaks
 - ▲ Occupied Home

Available Winds:
 All except NW, W, SW

Ignition Sequence w/SE wind
 1-2 & 1-6-5-4
 4-3 & 2-3

