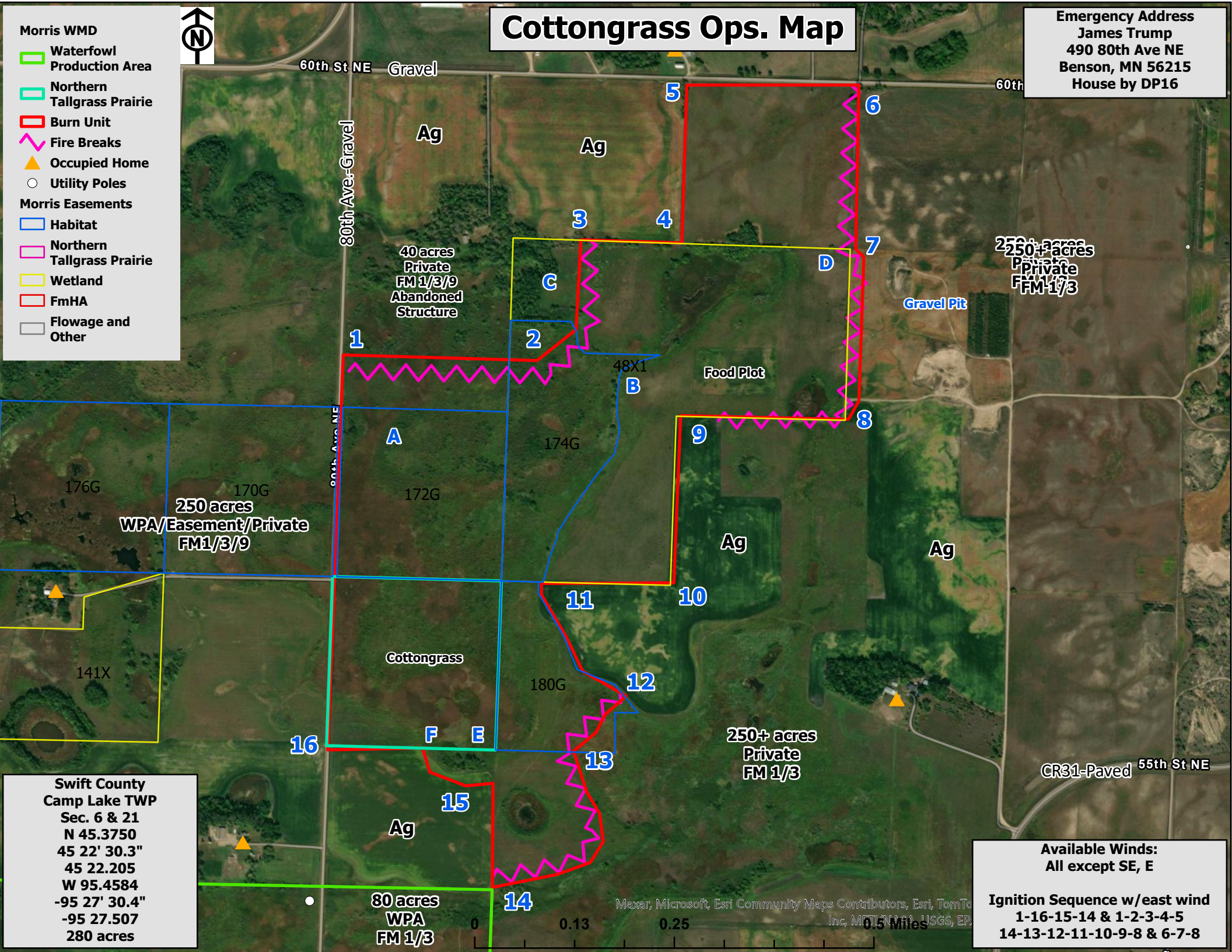


Cottongrass Ops. Map

Emergency Address
James Trump
490 80th Ave NE
Benson, MN 56215
House by DP16

- Morris WMD**
- Waterfowl Production Area
 - Northern Tallgrass Prairie
 - Burn Unit
 - Fire Breaks
 - ▲ Occupied Home
 - Utility Poles
- Morris Easements**
- Habitat
 - Northern Tallgrass Prairie
 - Wetland
 - FmHA
 - Flowage and Other



60th St NE Gravel

60th

80th Ave-Gravel

80th Ave-Gravel

CR31-Paved 55th St NE

40 acres Private FM 1/3/9 Abandoned Structure

250+ acres Private FM 1/3

250 acres WPA/Easement/Private FM 1/3/9

250+ acres Private FM 1/3

80 acres WPA FM 1/3

Swift County
Camp Lake TWP
Sec. 6 & 21
N 45.3750
45 22' 30.3"
45 22.205
W 95.4584
-95 27' 30.4"
-95 27.507
280 acres

Available Winds:
All except SE, E

Ignition Sequence w/east wind
1-16-15-14 & 1-2-3-4-5
14-13-12-11-10-9-8 & 6-7-8

Maxar, Microsoft, Esri Community Maps Contributors, Esri, TomTom, Inc, MNTN, USGS, EP

