




Larson Ops Map

Legend

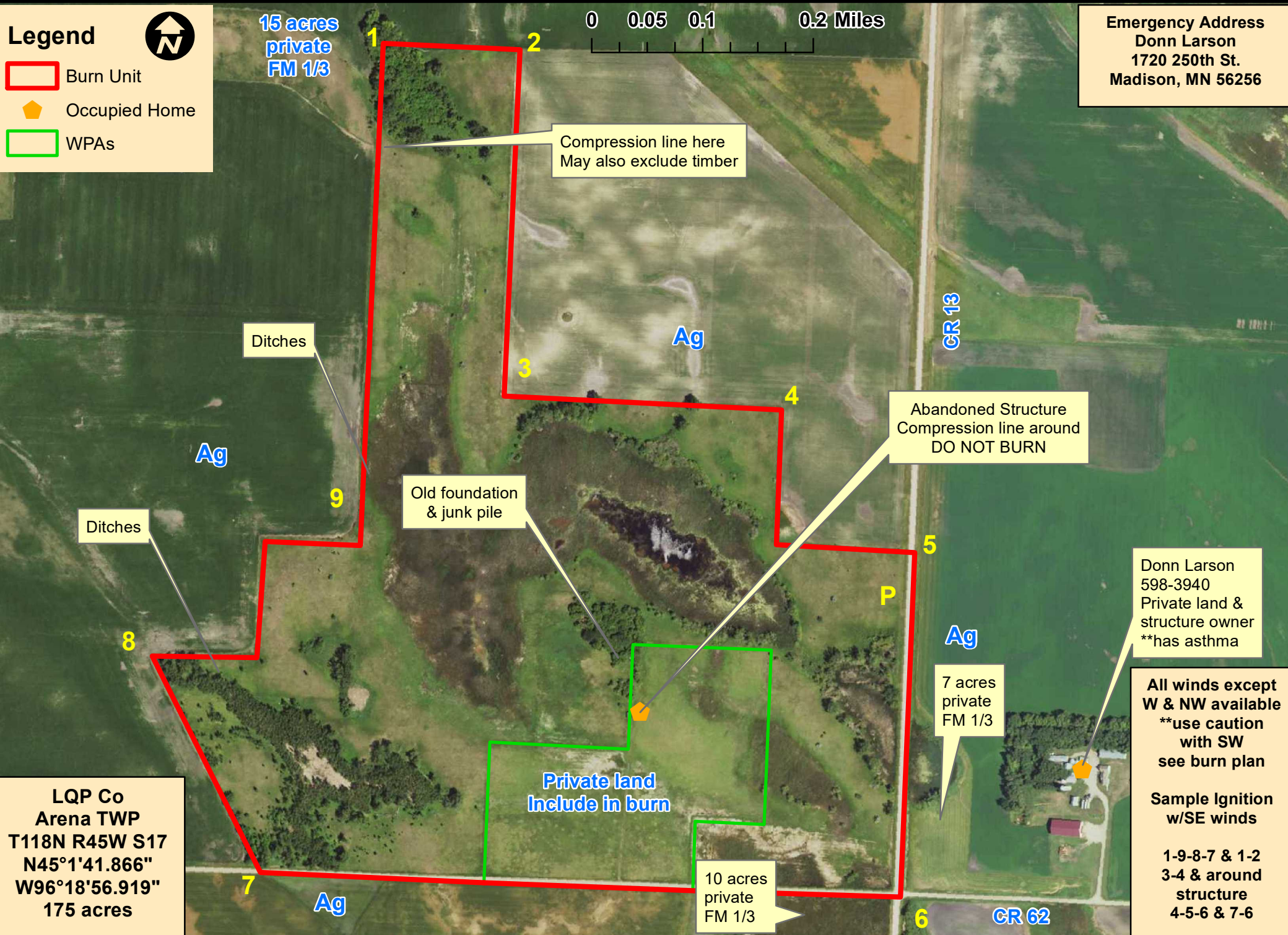
-  Burn Unit
-  Occupied Home
-  WPAs



0 0.05 0.1 0.2 Miles

Emergency Address
 Donn Larson
 1720 250th St.
 Madison, MN 56256

15 acres private FM 1/3



Compression line here
 May also exclude timber

Abandoned Structure
 Compression line around
 DO NOT BURN

Old foundation
 & junk pile

Donn Larson
 598-3940
 Private land &
 structure owner
 **has asthma

**All winds except
 W & NW available
 **use caution
 with SW
 see burn plan**

**Sample Ignition
 w/SE winds**

1-9-8-7 & 1-2
 3-4 & around
 structure
 4-5-6 & 7-6

**LQP Co
 Arena TWP
 T118N R45W S17
 N45°1'41.866"
 W96°18'56.919"
 175 acres**

10 acres private FM 1/3

7 acres private FM 1/3

Ditches

Ditches

15 acres private FM 1/3

Private land
 Include in burn

7 acres private FM 1/3

10 acres private FM 1/3

**LQP Co
 Arena TWP
 T118N R45W S17
 N45°1'41.866"
 W96°18'56.919"
 175 acres**