

# Nelson Lake SW Ops Map

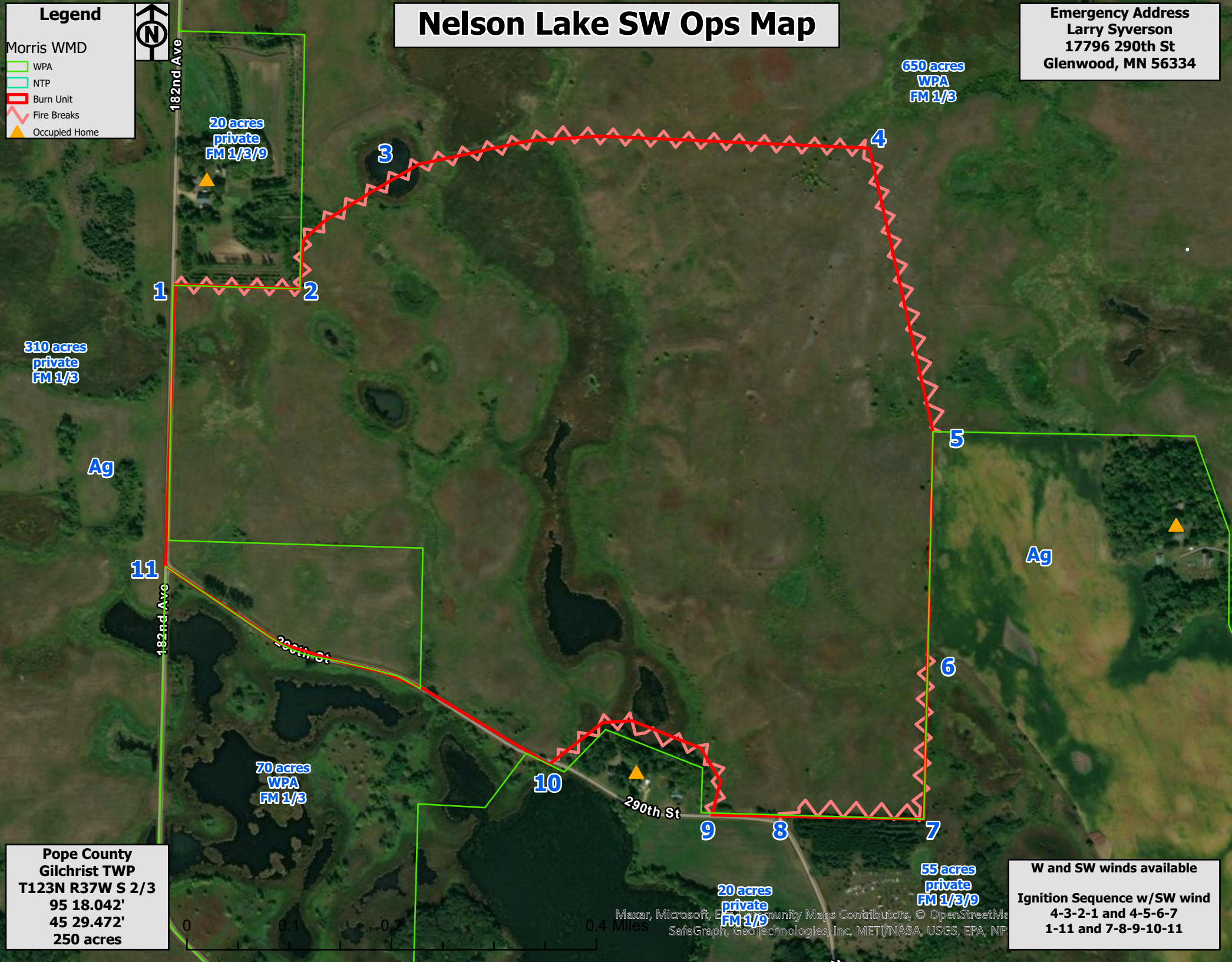
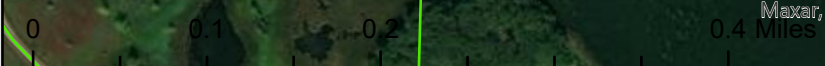
Emergency Address  
Larry Syverson  
17796 290th St  
Glenwood, MN 56334

**Legend**

- Morris WMD
- WPA
- NTP
- Burn Unit
- Fire Breaks
- Occupied Home



Pope County  
Gilchrist TWP  
T123N R37W S 2/3  
95 18.042'  
45 29.472'  
250 acres



W and SW winds available  
Ignition Sequence w/SW wind  
4-3-2-1 and 4-5-6-7  
1-11 and 7-8-9-10-11

Maxar, Microsoft, Esri, Community Maps Contributors, © OpenStreetMap, SafeGraph, Geo technologies, Inc. METI/NASA, USGS, EPA, NP