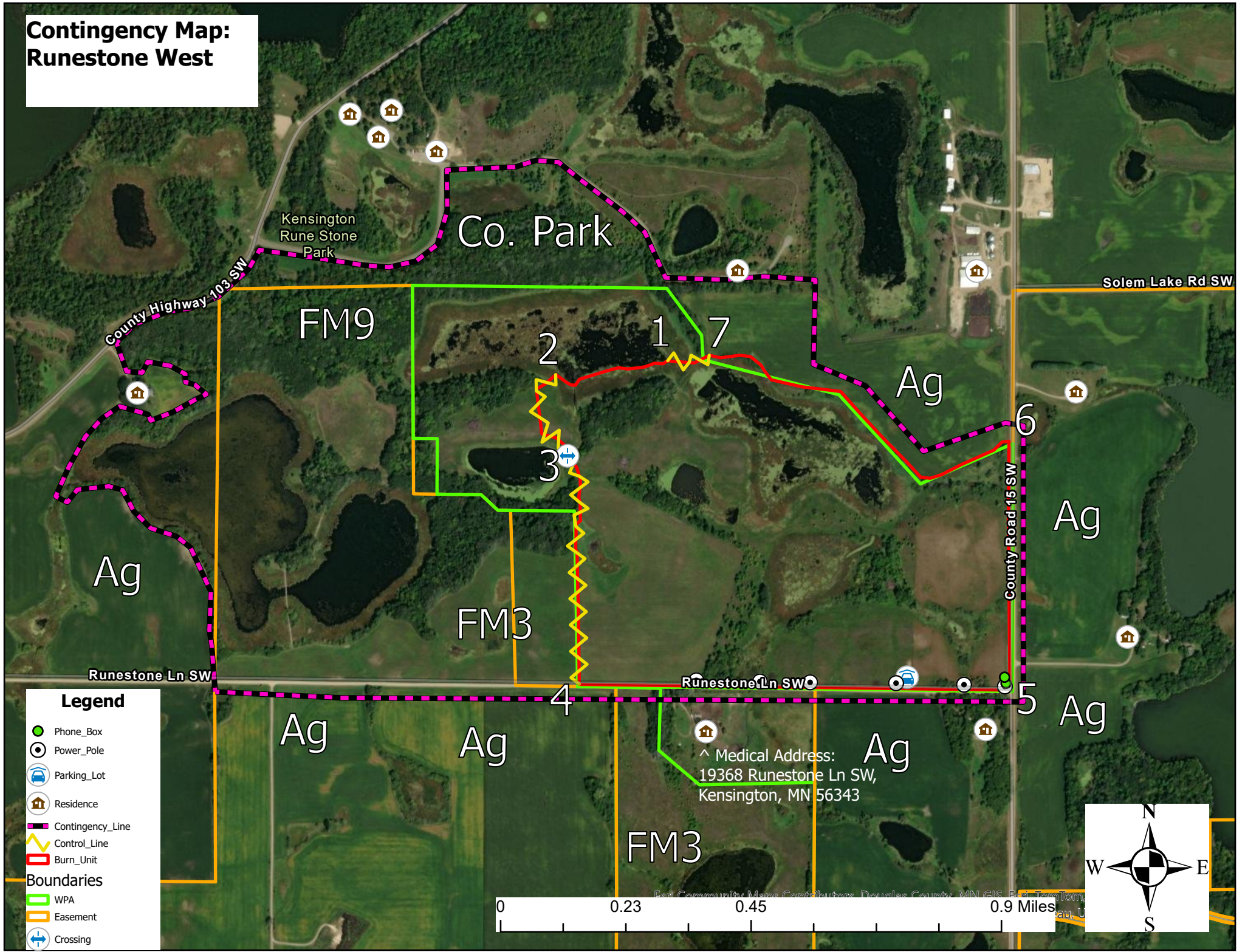


Contingency Map: Runestone West



Legend

- Phone_Box
- Power_Pole
- Parking_Lot
- Residence
- Contingency_Line
- Control_Line
- Burn_Unit

Boundaries

- WPA
- Easement
- Crossing

^ Medical Address:
19368 Runestone Ln SW,
Kensington, MN 56343

