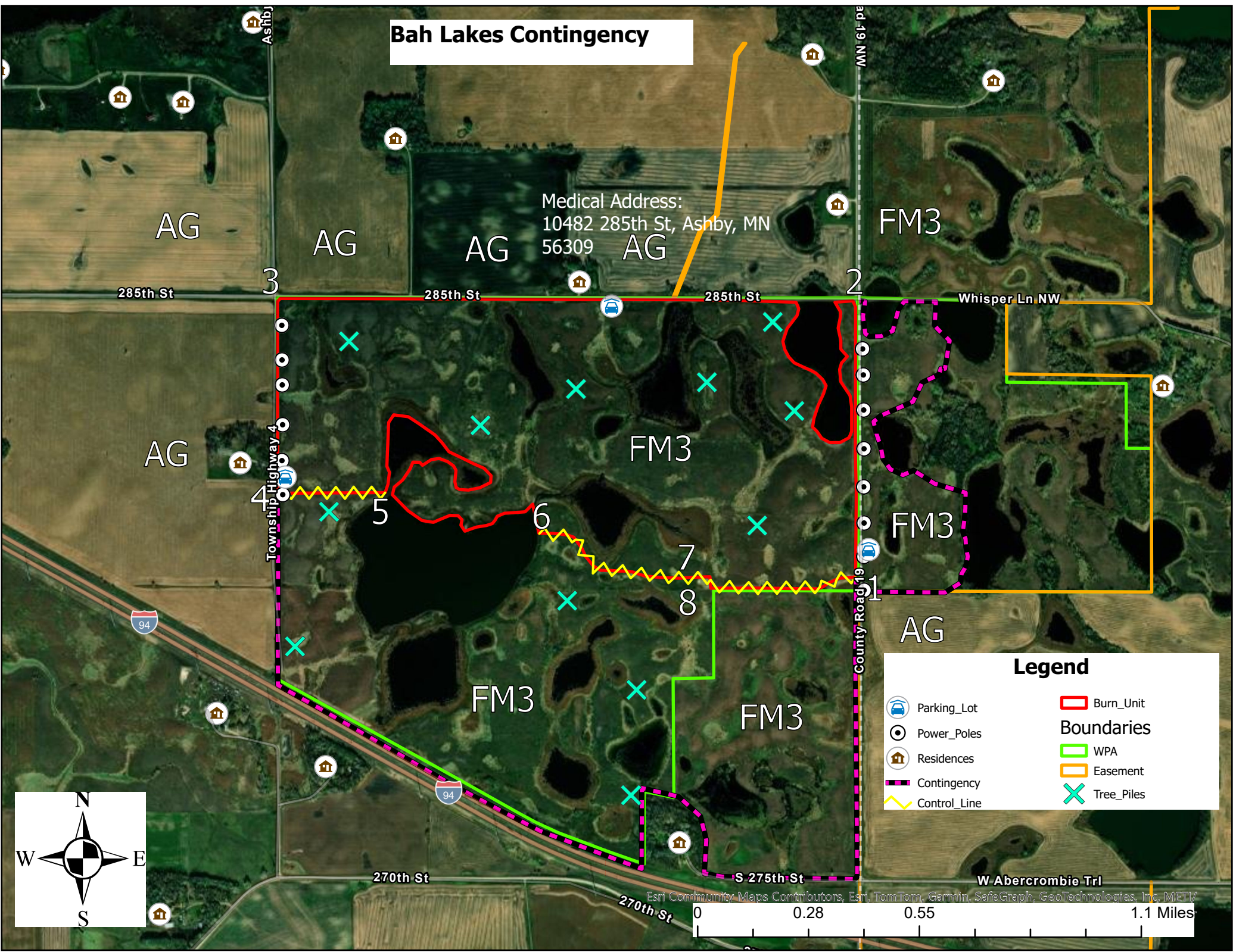


Bah Lakes Contingency

Medical Address:
10482 285th St, Ashby, MN
56309



Legend

	Parking_Lot		Burn_Unit
	Power_Poles		WPA
	Residences		Easement
	Contingency		Tree_Piles
	Control_Line		



Esri Community Maps Contributors, Esri, TomTom, Garmin, SafeGraph, GeoTechnologies, Inc., METI/