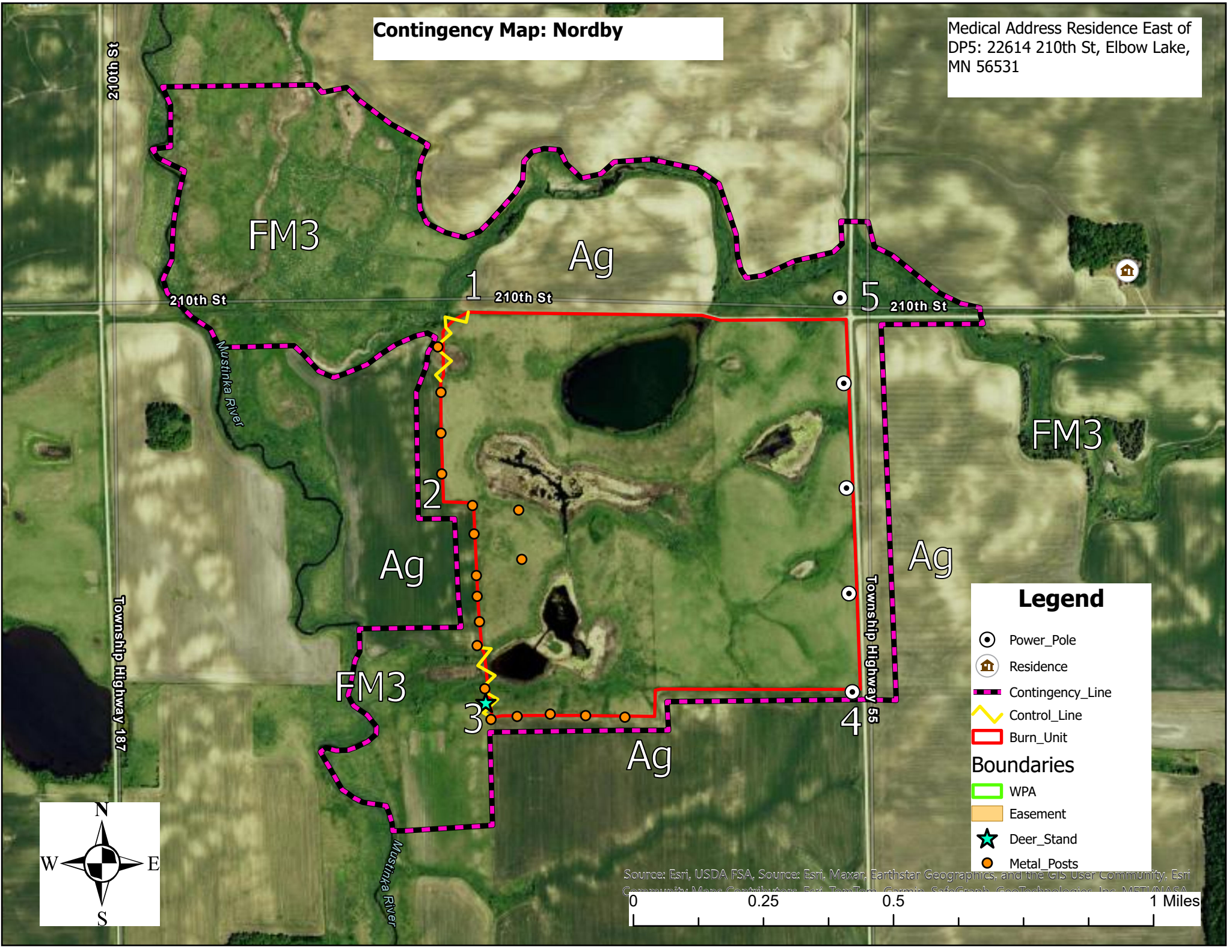


# Contingency Map: Nordby

Medical Address Residence East of DP5: 22614 210th St, Elbow Lake, MN 56531



### Legend

- Power\_Pole
- Residence
- Contingency\_Line
- Control\_Line
- Burn\_Unit

### Boundaries

- WPA
- Easement
- Deer\_Stand
- Metal\_Posts

Source: Esri, USDA FSA, Source: Esri, Maxar, Earthstar Geographics, and the GIS User Community, Esri Community, Map Contributors, Esri, TomTom, Garmin, Swatch, GeoTechnology, Inc, METI/NASA

0 0.25 0.5 1 Miles

