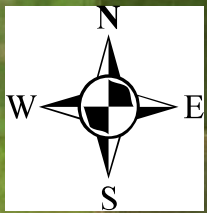
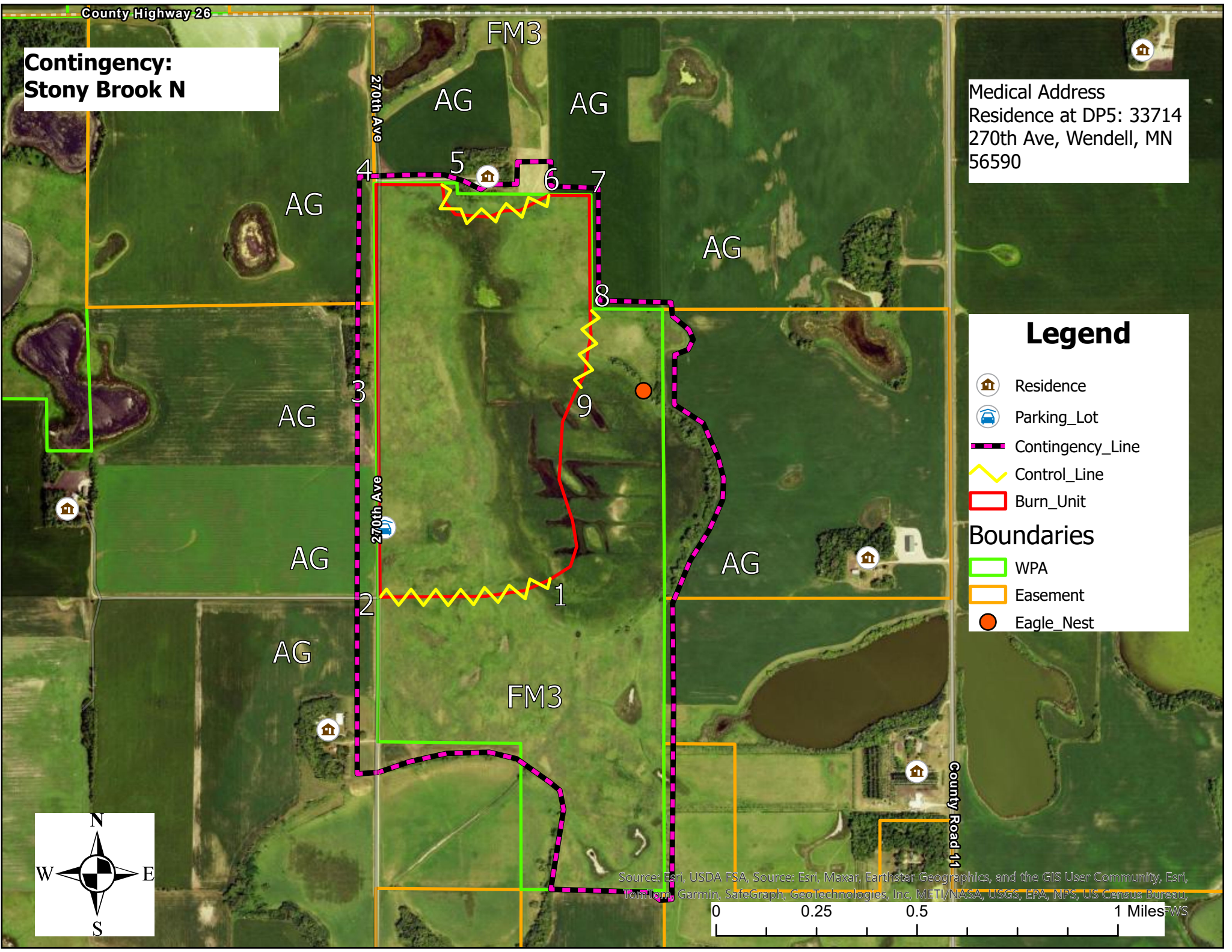


# Contingency: Stony Brook N

Medical Address  
Residence at DP5: 33714  
270th Ave, Wendell, MN  
56590

## Legend

-  Residence
  -  Parking\_Lot
  -  Contingency\_Line
  -  Control\_Line
  -  Burn\_Unit
- ### Boundaries
-  WPA
  -  Easement
  -  Eagle\_Nest



Source: Esri, USDA FSA, Source: Esri, Maxar, Earthstar Geographics, and the GIS User Community, Esri, TomTom, Garmin, SafeGraph, GeoTechnologies, Inc, METI/NASA, USGS, EPA, NPS, US Census Bureau,

